

MOSSBERG®

2024 CATALOG





LETTER FROM THE CEO

We greatly appreciate your interest in Mossberg firearms and the consideration you've given us for your upcoming endeavor. As a family-owned enterprise spanning four generations, we take pride in sharing the rich tradition of shooting sports within our own households. It is truly an honor to be a part of this same tradition within your home.

Since our establishment in 1919, Mossberg has witnessed significant transformations in the realms of engineering, manufacturing, and technology. Although the methods of designing, constructing, and bringing our firearms to market have evolved considerably from the days when my great-grandfather, Oscar Mossberg, crafted pistols in his garage, one fundamental principle remains steadfast: Mossberg's unwavering commitment to quality and reliability.

Our contemporary products are manufactured with the same passion for our craft, the same dedication to our customers, and the same commitment to the Second Amendment, as they were a century ago. Whether utilized for hunting, shooting sports, self-defense, or by Military and Law Enforcement professionals at home and overseas, we faithfully uphold our century-old reputation for producing durable and reputable products.

On behalf of the Mossberg family, I extend heartfelt gratitude for your allegiance to the Mossberg® brand. It is you, the customer, for whom we tirelessly design and build, continually striving to meet your needs and provide you with the most dependable firearms available.

Thank you for choosing Mossberg.



Alan Iver Mossberg, Jr.
Chief Executive Officer


TABLE OF CONTENTS

PRODUCT HIGHLIGHTS - 2024	4-5
HANDGUNS	6-9
PISTOL GRIP FIREARMS	10-17
SECURITY SHOTGUNS	18-35
FIELD & SPORTING SHOTGUNS	36-67
HUNTING & TACTICAL RIFLES	68-83
ACCESSORIES	84-90
MOSSBERG SAFETY	91



This document is for informational purposes only and may contain errors, inadvertent omissions or typographical errors. Mossberg shall not be liable to you for any claim whatsoever arising from the inaccuracy. Specifications are subject to change. Not all products are available in all states and jurisdictions. Consult and comply with any and all applicable federal, state, and local laws, regulations, requirements, and/or restrictions, including but not limited to those regarding the purchase, ownership, use, transport and carrying of a firearm.

Company names other than O.F. Mossberg & Sons, Inc. mentioned herein, and such other companies' respective product names may be trademarks of such respective companies. The absence herein of any product name, mark, logo, etc. does not constitute a waiver by O.F. Mossberg & Sons, Inc. of any intellectual property right that it may own.

 **WARNING:** Use of firearm products and accessories can expose you to chemicals including lead, which are known to the State of California to cause cancer, birth defects or other reproductive harm. For more information go to w.P65Warnings.ca.gov.

PRODUCT HIGHLIGHTS 2024

OPTIC-READY SHOTGUNS, PISTOLS & HOLOSUN® MICRO DOT COMBOS

Improved eye alignment and target acquisition are in sight with Mossberg Optic-Ready firearms and Micro Dot Combos. Pistol slide cuts and patent-pending shotgun receiver cuts facilitate easy low-profile direct mounting of popular micro dot optics. A Holosun HS407K Combo is available, with a pre-mounted optic, on select Security and Hunting shotguns—for ready-to-use convenience straight out of the box.

MC2c® & MC2sc® Pistols

Pages 8-9

590® Thunder Ranch

Pages 24-25

590S® Shotguns

Pages 28-29

940® Pro Tactical

Pages 34-35

500® Field - Turkey

Pages 38-39

835® Ulti-Mag® - Turkey

Pages 46-47

940® JM Pro

Pages 48-49

940® Pro - Turkey

8 Waterfowl
Pages 50-54

Holosun is a registered trademark of Holosun Technologies, Inc.

(Not all Micro Dot sights shown are included)



(Right) Our Optic-Ready shotguns feature patent-pending receiver cuts with a removeable plate, for quick and easy mounting of Shield RMSc-pattern optics.



The MC2c® Compact and MC2sc® Micro-Compact make up Mossberg's offerings of optic-ready 9MMs.



PATRIOT™ RIFLES in STRAIGHT-WALLED CALIBERS

Patriot Rifles are now available in three straight-walled calibers: 450 Bushmaster, 350 Legend, and new 400 Legend. Straight-walled calibers deliver devastating knock-down power and open up whitetail hunting opportunities in an increasing number of locales.

Straight-Walled Caliber Patriot Rifles
Pages 72-73 & 76-77



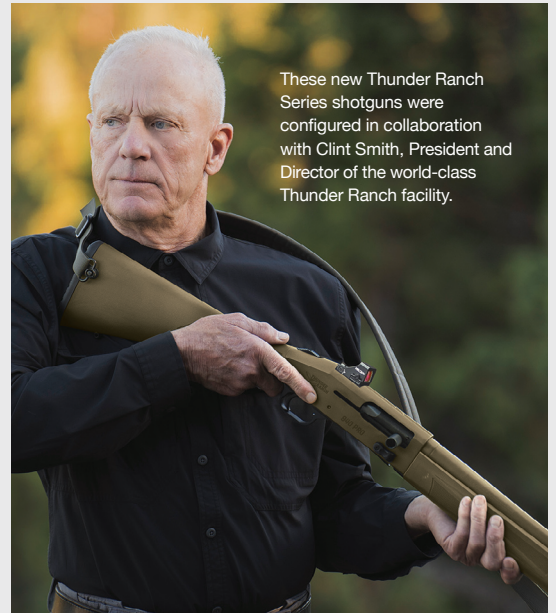


ALL-NEW THUNDER RANCH SHOTGUNS

With an all-new look and feature set for 2024, we've revamped our popular Thunder Ranch Series pump-action and autoloader models. Each shotgun sports a durable Cerakote® finish for extra abrasion and corrosion protection, and a handsome logo-engraved receiver that includes our patent-pending optic-ready cuts for micro dot sighting options straight from the box. The 940 model comes with an adjustable stock, enlarged/beveled loading gate, and handy built-in QD swivel ports. (Cerakote is a registered trademark of NIC Industries, Inc.)

590 - Thunder Ranch | Pages 24-25

940 Pro Tactical - Thunder Ranch | Pages 34-35



These new Thunder Ranch Series shotguns were configured in collaboration with Clint Smith, President and Director of the world-class Thunder Ranch facility.



MOSSBERG INTERNATIONAL™ OVER-AND-UNDERS

The Silver Reserve Eventide Series has been expanded to include new models in the All-Purpose, Turkey, and Waterfowl categories. Select models come in three gauges, with barrels ranging from a compact 18.5 inches out to 28 inches, and with choices in a variety of finishes.

Silver Reserve Eventide O/Us | Pages 66-67





HANDGUNS

MOSSBERG

SEMI-AUTOMATIC 9MM





MC2® PISTOLS. OPTIC-READY. CARRY-READY.

Slim, lightweight, and engineered for comfortable concealed carry— the ergonomically-designed MC2 Series pistols have double-stack 9mm magazines that provide up to 16+1 capacity when you need it most, and an optic-ready slide for easy direct mounting of popular Micro Dot optics.



MC2sc® & MC2c® Semi-Automatic 9mm Pistols



MC2sc - Micro-Compact
Incl. 11Rd & 14Rd | #89025
Also available:
Incl. Two 10Rd | #89046



MC2c - Compact
Incl. 14Rd & 16Rd | #89031
Also available:
Incl. Two 10Rd | #89030



**MC2sc w/TRUGLO®
Tritium Pro® Night Sights**
Incl. 11Rd & 14Rd | #89044



MC2sc w/Manual Safety
Incl. 11Rd & 14Rd | #89027



**MC2c w/TRUGLO®
Tritium Pro® Night Sights**
Incl. 14Rd & 16Rd | #89033



MC2c w/Manual Safety
Incl. 14Rd & 16Rd | #89032

MOSSBERG MC2sc & MC2c SEMI-AUTOMATIC PISTOLS | Optic-Ready Slide, Striker Fired, Cut Broached Six Groove Rifling, Safe Takedown System

TYPE	ITEM #	CALIBER	CAPACITY	BARREL LENGTH & FINISH	TWIST	SAFETY CONFIGURATION	SIGHTS (SIGHT RADIUS)	OVERALL DIMENSIONS LENGTH HEIGHT WIDTH	FRAME & FINISH	SLIDE FINISH	APPROX. WEIGHT UNLOADED/LOADED
MC2sc MICRO-COMPACT Includes 11-Round Flush-Fit & 14-Round Extended Magazines or Two 10-Round Magazines											
Standard	89025	9mm	11+1, 14+1	3.4" DLC	1:16"	Trigger Blade	White 3-Dot (5.40")	6.25" 4.30" 1.10"	Polymer (Matte Black)	DLC (Black)	19.5oz/25oz
Manual Safety	89027	9mm	11+1, 14+1	3.4" DLC	1:16"	Trigger Blade & Manual	White 3-Dot (5.40")	6.25" 4.30" 1.10"	Polymer (Matte Black)	DLC (Black)	19.5oz/25oz
Tritium Sights	89044	9mm	11+1, 14+1	3.4" DLC	1:16"	Trigger Blade	TRUGLO Tritium Pro (5.40")	6.25" 4.30" 1.10"	Polymer (Matte Black)	DLC (Black)	19.5oz/25oz
Standard (10-Rd)	89046	9mm	10+1	3.4" DLC	1:16"	Trigger Blade	White 3-Dot (5.40")	6.25" 4.30" 1.10"	Polymer (Matte Black)	DLC (Black)	19.5oz/24.5oz
MC2c COMPACT Includes 14-Round Flush-Fit & 16-Round Extended Magazines or Two 10-Round Magazines											
Standard	89031	9mm	14+1, 16+1	3.9" DLC	1:16"	Trigger Blade	White 3-Dot (6.40")	7.10" 4.90" 1.10"	Polymer (Matte Black)	DLC (Black)	21oz/29oz
Manual Safety	89032	9mm	14+1, 16+1	3.9" DLC	1:16"	Trigger Blade & Manual	White 3-Dot (6.40")	7.10" 4.90" 1.10"	Polymer (Matte Black)	DLC (Black)	21oz/29oz
Tritium Sights	89033	9mm	14+1, 16+1	3.9" DLC	1:16"	Trigger Blade	TRUGLO Tritium Pro (6.40")	7.10" 4.90" 1.10"	Polymer (Matte Black)	DLC (Black)	21oz/29oz
Standard (10-Rd)	89030	9mm	10+1	3.9" DLC	1:16"	Trigger Blade	White 3-Dot (6.40")	7.10" 4.90" 1.10"	Polymer (Matte Black)	DLC (Black)	21oz/27oz

*Overall Dimensions: Measured with flush-fit magazine. Weight: Calculated using 11-Round (MC2sc) or 14-Round (MC2c) Magazine. 3-Dot: Single/Front and Dual/Rear White Dot sights, are dovetail-mounted and drift adjustable. TRUGLO® is a registered trademark of Good Sportsman Marketing, LLC. DLC: Diamond-Like Carbon Coating. Matte black finish. Slide: 416 Stainless Steel construction. STS: The patented slide cover plate design is used under license from Strike Industries (US1013917482). All models include a free gun lock. Not all products are available in all states and jurisdictions. Consult and comply with any and all applicable federal, state, and local: laws, regulations, requirements, and/or restrictions, including but not limited to those regarding the purchase, ownership and carrying of a firearm.

Optic-Ready Convenience— Built In.

All MC2 pistols have optic-ready slides* that easily facilitate the low-profile co-witness mounting of Shield RMSc-pattern micro dot optics for improved eye alignment and target acquisition.

Optic-Ready Mossberg pistols include the patented optic cut technology designed by ZEV Technologies,® US Patent #RE47335. ZEV Technologies is a registered trademark of ZEV Technologies, Inc. (Red Dot sights shown, not included)



Slim-Profile Double-Stack Magazines



Grips are designed to be extremely narrow for their capacity, engineered for slim profile double-stack magazines and retaining the superior ergonomics of the pistol's grip and palm swell. The result? Comfort in your hand and ease of concealability when needed. They feature: high-visibility followers, easy-to-remove floorplates, and are made of a coated steel for low friction and superior wear resistance. (For MC2 series accessory magazines and holsters, see Page 90)



Snag-Free Dovetail Sights

Standard snag-free dovetail white 3-Dot sights on both models offer easy target acquisition and quick draw. TRUGLO® Tritium PRO® sights (inset) are also available as a factory option.



Flat-Profile Trigger

The flat-profile trigger (approximate 5.5 lbs pull) has an integrated blade safety, a short, tactile reset, and reduced overtravel. It features a crisp, clean break and smooth take-up for less hand movement for a truer, more accurate shot.



Superior Ergonomics

Frames are high-tensile strength glass reinforced polymer; feature Mossberg's signature aggressive grip texturing and palm swell for a confident, firm grip under a variety of conditions.



Reversible Cross-Bolt Safety

Available as an option on MC2sc and MC2c models, the manual cross-bolt safety provides added security and peace of mind for users.

MC2 Safe Takedown System™

Both models are equipped with Mossberg's exclusive Safe Takedown System. It requires the user to make the handgun safe by removing the striker assembly before removing the slide. The user is not required to pull the trigger in order to disassemble the handgun for cleaning and maintenance.



1.



2.



3.



4.

1. Remove the magazine and lock the slide open. Clear the action by visually and physically inspecting the chamber to be certain it is unloaded. Push the rear slide plate button and slide it down.** **2.** Once the slide plate is removed, the end of the striker assembly will be visible.

**The patented slide cover plate design is used under license from Strike Industries (US10139174B2).

3. Close the action by pulling the slide fully rearward and releasing it gently. This will allow the slide to push out the striker assembly. **4.** The striker assembly is safely removed from the pistol without ever pulling the trigger. The slide is then pushed forward towards the muzzle, and removed off of the frame.





MOSSBERG

PISTOL GRIP

PUMP-ACTION FIREARMS



590S[®]/590[®] SHOCKWAVES

Pump-Action Firearms



590S Shockwave - 14"
12GA | #51601



TALO
EXCLUSIVE

590 Nightstick
20GA | 6-Shot | #50675
Also Available in 12GA | #50651



590 Shockwave SPX
12GA | 6-Shot | #50648



590 Shockwave - Flat Dark Earth
12GA | 6-Shot | #50653



590 Shockwave
12GA | 6-Shot | #50659



590 Shockwave JIC
12GA | 6-Shot | #50656



The JIC series provides durable, portable shotgun storage solutions for easy stowing or transport.

Mossberg 590 Shockwaves: Small in size, but big when it comes to performance. These pump-action firearms are fun to shoot, convenient to store, and easy to clean and maintain.



590 SHOCKWAVE FEATURES

- 6-Shot and 7-Shot (18.5" bbl)
- 12 Gauge, 20 Gauge, and .410 Bore
- Bird's-head grip
- Clean-out tube
- Heavy-walled barrel (14" only)
- Strapped forend
- Matte and Cerakote[®] finishes
- Drilled and tapped receiver
- Standard features include dual extractors, steel-to-steel lockup, top-mounted ambidextrous safety, twin action bars, and anti-jam elevator

FOR SPECIFICATIONS, SEE PAGE 14



The 590S Series has a patented design that allows the firearm to cycle 1.75" short shells, providing complete shotshell flexibility— Load a common shell length based on specific use...

Shell Compatibility Examples

All 1.75"

All 2.75"

All 3"



or load any combination of lengths... no adaptor required!

Mixed Lengths



Shockwave is a trademark of Shockwave Technologies, LLC. Cerakote is a registered trademark of NIC Industries, Inc. Crimson Trace and Lasersaddle are registered trademarks of Crimson Trace Corporation.



590S Shockwave - 18.5"
12GA | #51600



590 Shock 'N' Saw
12GA | 6-Shot | #50647



590 Shockwave
20GA | 6-Shot | #50657



590 Shockwave
.410 Bore | 6-Shot | #50649



**590 Shockwave
Crimson Trace® Lasersaddle®**
20GA | 6-Shot | #50637
Also Available in 12GA | #50638

FOR SPECIFICATIONS, SEE PAGE 14

590S[®]/590[®] SHOCKWAVES

Pump-Action Firearms



The Shockwave and Nightstick bird's-head style pistol grips are uniquely shaped to provide a firm grip and minimize felt recoil.



The 590 Shockwave's light weight, 14" barrel, unique grip, and strapped forend make it easy to control from different shooting positions for a wide variety of users.



The 590 Shockwave's strapped forend keeps the lead hand clear of the muzzle when cycling the action.



The Lasersaddle[®] system is seamlessly attached to the 590 receiver. The 5mW beam is adjustable for windage and elevation, and the unit has three conveniently-reached touchpad activation points.

590S SHOCKWAVE | 3" Chamber with 1.75" Short Shell, 2.75," and 3" Cycling Capability, Strapped Forend, Logo Engraved Receiver

TYPE	ITEM #	GA.	MAXIMUM CAPACITIES* BY SHELL LENGTH			BARREL	SIGHTS	BORE	OVERALL LENGTH	METAL FINISH	GRIP/FOREND & FINISH	APPROX. WEIGHT
			1.75" SHELLS	2.75" SHELLS	3" SHELLS							
590S SHOCKWAVE												
14" Barrel	51601	12	8+1	5+1	4+1	14.375" Hvy-Walled	Bead	Cylinder Bore	26.37"	Matte Blue	Shockwave Bird's-head Grip & Strapped Forend (Black)	5.3 lbs
18.5" Barrel	51600	12	9+1	6+1	5+1	18.5"	Bead	Cylinder Bore	30.75"	Matte Blue	Shockwave Bird's-head Grip & Strapped Forend (Black)	5.5 lbs

590S Shotgun models also available, see page 28.

Maximum Capacities*: Depending upon shotshell tolerance variations and firearms model configuration, total capacity may be reduced by one shotshell. As a firearm owner or potential owner, you are responsible for complying with all applicable laws including but not limited to any state or local restrictions regarding possession or capacity. Check with your local retailer or State Police for laws that may be applicable to you. Since such regulations are subject to change, state and local authorities are in the best position to advise on such matters. **LOP:** Length of pull. Shockwave is a trademark of Shockwave Technologies, LLC. All models include a free gun lock.

590 SHOCKWAVE | 3" Chamber, Strapped Forend

TYPE	ITEM #	GAUGE/BORE	2.75" CAPACITY	BARREL	SIGHTS	CHOKES	OVERALL LENGTH	METAL FINISH	GRIP	NOTES	APPROX. WEIGHT
590 SHOCKWAVE											
6-Shot	50659	12	5+1	14.375" Hvy-Walled	Bead	Cylinder Bore	26.37"	Matte Blue	Shockwave Bird's-head Grip	—	5.3 lbs
6-Shot w/Cerakote [®]	50653	12	5+1	14.375" Hvy-Walled	Bead	Cylinder Bore	26.37"	Cerakote (FDE)	Shockwave Bird's-head Grip	—	5.3 lbs
6-Shot Shock 'N' Saw	50647	12	5+1	14.375" Hvy-Walled Stand-off	Bead	Cylinder Bore	26.37"	Matte Blue	Shockwave Bird's-head Grip	Railed Forend; Chainsaw Top Handle, Stand-off Muzzle, Heat Shield	6.3 lbs
6-Shot SPX	50648	12	5+1	14.375" Hvy-Walled Stand-off	Bead	Cylinder Bore	26.37"	Matte Blue	Shockwave Bird's-head Grip	Picatinny Rail; 5 Shell Holders; Stand-off Muzzle; Heat Shield	6.3 lbs
7-Shot	50639	12	6+1	18.5"	Bead	Cylinder Bore	30.75"	Matte Blue	Shockwave Bird's-head Grip	—	5.5 lbs
6-Shot	50657	20	5+1	14.375" Hvy-Walled	Bead	Cylinder Bore	26.37"	Matte Blue	Shockwave Bird's-head Grip	—	4.95 lbs
6-Shot	50649	.410	5+1	14.375" Hvy-Walled	Bead	Cylinder Bore	26.37"	Matte Blue	Shockwave Bird's-head Grip	—	6.3 lbs

590 SHOCKWAVE w/LASERSADDLE™ – 6-SHOT | Crimson Trace[®] Lasersaddle Sighting System: 5mW Laser/3 Touchpad Activation Points/Windage & Elevation Adjustable

6-Shot w/Lasersaddle	50638	12	5+1	14.375" Hvy-Walled	Bead	Cylinder Bore	26.37"	Matte Blue	Shockwave Bird's-head Grip	Includes Crimson Trace Red Dot Lasersaddle	6 lbs
6-Shot w/Lasersaddle	50637	20	5+1	14.375" Hvy-Walled	Bead	Cylinder Bore	26.37"	Matte Blue	Shockwave Bird's-head Grip	Includes Crimson Trace Red Dot Lasersaddle	5.75 lbs

590 SHOCKWAVE JIC – 6-SHOT | Water-Resistant Carrying Tube/Strap

6-Shot – 590 JIC Series w/Cerakote [®]	50656	12	5+1	14.375" Hvy-Walled	Bead	Cylinder Bore	26.37"	Cerakote (Stainless)	Shockwave Bird's-head Grip	Water-Resistant Carrying Tube/Strap (Intl. Orange)	5.3 lbs*
---	-------	----	-----	--------------------	------	---------------	--------	----------------------	----------------------------	--	----------

590 NIGHTSTICK** – 6-SHOT | Leather Forend Strap

6-Shot Nightstick**	50651	12	5+1	14.375" Hvy-Walled	Bead	Cylinder Bore	26.37"	Matte Blue	Bird's-head Wood Grip	Wood Corncob forend w/Leather strap	5.25 lbs
6-Shot Nightstick**	50675	20	5+1	14.375" Hvy-Walled	Bead	Cylinder Bore	26.37"	Matte Blue	Bird's-head Wood Grip	Wood Corncob forend w/Leather strap	4.90 lbs

Requires no stamp for transfers. **Overall Length and Weight*:** 590 Shockwave JIC only. Does not include carrying tube. **LOP:** Length of pull. **Cerakote:** Premium polymer-ceramic protective coating. Cerakote is a registered trademark of NIC Industries, Inc. **FDE:** Flat Dark Earth colored finish. **Stainless:** Stainless steel-colored finish. Crimson Trace and Lasersaddle are trademarks of Crimson Trace Corporation. Shockwave is a trademark of Shockwave Technologies, LLC. All models include a free gun lock. Not all products are available in all states and jurisdictions. Check your state and local laws and regulations.

****DEALERS CAN ONLY ORDER 590 NIGHTSTICK MODELS (#50651 AND #50675) THROUGH A TALO GROUP DISTRIBUTOR. VISIT WWW.TALOINC.COM FOR MORE INFORMATION.**



590M[®] SHOCKWAVE

Pump-Action Firearm

MOSSBERG



590M Shockwave

12GA | 10-Round Detachable Magazine | #50208

Combining double-stack detachable pump-action magazines in a compact package with a 15" barrel and bird's-head grip, our 590M Shockwave is the best of both worlds.



All-steel magazine release button and housing are optimally positioned in front of the trigger guard for quick, ambidextrous access for reloading — and will not interfere with cycling the action.



590M shotguns and magazines are uniquely designed, incorporating stabilizing ribs that engage the magazine directly to the receiver for a sure lockup.



Hardened steel feed lips and over-molded steel shell ramps ensure efficient feeding. Anti-cant rounded follower improves feeding; round limiter improves spring life.



Removable floor plate for easy cleaning; ASTM-A-228 music wire springs improve feeding, increase durability, and prolong service life.

590M SHOCKWAVE FEATURES

- 12 Gauge, with 10-Round detachable magazine
- Heavy-walled barrel
- Bird's-head grip
- Strapped forend
- Standard pump-action features include dual extractors, steel-to-steel lockup, top-mounted ambidextrous safety, and twin action bars
- Drilled and tapped receiver
- Accessory magazines available in 5, 10, 15 and 20-round capacities

590M Accessory Magazines



590M SHOCKWAVE | 2.75" Chamber

TYPE	ITEM #	GA.	2.75" CAPACITY	BARREL	SIGHTS	CHOKE	OVERALL LENGTH	METAL FINISH	STOCK/FINISH	APPROX. WEIGHT
590M Shockwave/11-Shot	50208	12	10+1	15"	Bead	Cylinder Bore	27.75"	Matte Blue/Logo Embellished Receiver	Raptor Grip/Corncob Forend w/Strap (Black)	7.75 lbs

Chamber: 590M shotguns require the use of 2.75" shotshells. **LOP:** Length of pull. **Weight:** Calculated with empty mounted 10-round magazine. All models include a free gun lock. Not all products are available in all states and jurisdictions. Check your state and local laws and regulations.

590M Shotguns also available, see page 27.

590M MAG-FED ACCESSORY MAGAZINES

TYPE	ITEM #	GA.	2.75" CAPACITY	TYPE	DIMENSIONS	MATERIAL/CONSTRUCTION	FEED LIPS	APPROX. WEIGHT
5-Round Magazine	95137	12	5	Double-Stack	2.5"L x 3.5"W x 5.375"H	High-Impact Polymer Tower, with Proprietary Self-Lubricating Polymer Body	Hardened Steel	0.96 lbs
10-Round Magazine	95138	12	10	Double-Stack	2.5"L x 3.5"W x 8.0"H	High-Impact Polymer Tower, with Proprietary Self-Lubricating Polymer Body	Hardened Steel	1.26 lbs
15-Round Magazine	95139	12	15	Double-Stack	2.5"L x 3.5"W x 10.375"H	High-Impact Polymer Tower, with Proprietary Self-Lubricating Polymer Body	Hardened Steel	1.46 lbs
20-Round Magazine	95140	12	20	Double-Stack	2.5"L x 3.5"W x 12.625"H	High-Impact Polymer Tower, with Proprietary Self-Lubricating Polymer Body	Hardened Steel	1.70 lbs

Magazines: Work exclusively with Mossberg 590M Shotguns, using 2.75" shotshells. **Weights:** Calculated without shotshells. **Patented:** Design components including double-stack design are covered by patents owned by Adaptive Tactical LLC. **Self-lubricating:** Dupont proprietary self-lubricating polymer body improves feeding and reduces internal friction. Not all products are available in all states and jurisdictions. Check your state and local laws and regulations.



Reliability. Maneuverability. Compact Storage.

When it comes to keeping your home and family safe, Mossberg and Maverick pumps can't be beat. Ruggedly built and simple to operate, and with a pistol grip and short barrel, Cruiser models offer ease of navigation in tight and confined spaces.

CRUISER SERIES FEATURES

- 6-Shot or 8-Shot
- 12 Gauge and 20 Gauge
- Standard pump-action features include dual extractors, steel-to-steel lockup, twin action bars, and anti-jam elevator
- Compact and maneuverable
- Top-mounted ambidextrous safety (Mossberg), Crossbolt Safety (Maverick)
- Chainsaw model offers removable top grip



590 Cruiser
12GA | 6-Shot | #50697



590 Chainsaw
12GA | 6-Shot | #50692

*Chainsaw Handle
Top View*



500 FLEX Tactical Cruiser
12GA | 6-Shot | #50673



Maverick 88 Cruiser
12GA | 8-Shot | #31080



Maverick 88 Cruiser
20GA | 6-Shot | #32204
Also Available in 12GA | #31008

MOSSBERG 590 & 500 FLEX CRUISERS | 3" Chamber, Top-Mounted Ambidextrous Safety

TYPE	ITEM #	GAUGE	2.75" CAPACITY	BARREL	SIGHTS	CHOKES	OVERALL LENGTH	FOREND TYPE	METAL FINISH	GRIP & FINISH	APPROX. WEIGHT
590 CRUISER – 6-SHOT											
6-Shot – Cruiser	50697	12	5+1	18.5" Stand-off	White Dot	Cylinder Bore	28.12"	Corncob/Strapped	Matte Blue	Synthetic Pistol Grip (Black)	5.75 lbs
590 CHAINSAW – 6-SHOT Removable Top Grip, Stand-off Barrel, Tri-Rail Forend											
6-Shot – Cruiser/Tri-Rail	50692	12	5+1	18.5" Stand-off	White Dot	Cylinder Bore	28.12"	Tri-Rail	Matte Blue	Synthetic Pistol Grip (Black)	6 lbs
500 FLEX TACTICAL CRUISER – 6-SHOT FLEX System Connectors on Pistol Grip and Tactical Tri-Rail Forend, Stand-off Barrel											
6-Shot – FLEX Cruiser/Tri-Rail	50673	12	5+1	18.5" Stand-off	White Dot	Cylinder Bore	28.12"	FLEX Tri-Rail	Matte Blue	FLEX Pistol Grip Synthetic (Black)	6.75 lbs

MAVERICK 88 CRUISERS | 3" Chamber, Crossbolt Safety

TYPE	ITEM #	GAUGE	2.75" CAPACITY	BARREL	SIGHTS	CHOKES	OVERALL LENGTH	FOREND TYPE	METAL FINISH	GRIP & FINISH	APPROX. WEIGHT
MAVERICK 88 CRUISER – 6-SHOT & 8-SHOT											
6-Shot – Cruiser	31008	12	5+1	18.5"	Bead	Cylinder Bore	28.12"	Corncob	Blue	Synthetic Pistol Grip (Black)	5.75 lbs
6-Shot – Cruiser	32204	20	5+1	18.5"	Bead	Cylinder Bore	28.12"	Corncob	Blue	Synthetic Pistol Grip (Black)	5.5 lbs
8-Shot – Cruiser	31080	12	7+1	20"	Bead	Cylinder Bore	29.62"	Corncob	Blue	Synthetic Pistol Grip (Black)	6.5 lbs

Tri-Rail: Forend has fully integrated bottom Picatinny rail, and two mini side rails. **FLEX:** Utilizes FLEX System Pistol Grip and Forend components with quick-change connectors. See Page 88 for FLEX Accessories. All models include a free gun lock.

JIC® (JUST IN CASE) SERIES Pump-Action Firearms

MOSSBERG



500 JIC FLEX™
12GA | 6-Shot | #57340

MOSSBERG FLEX



Our JIC Cruiser Series pump-action firearms are popular with boaters, campers, and anyone looking for a portable solution for their firearm. The tubes have carrying straps and are water-resistant, and some models also come with a preparedness tool such as a multi-tool or survival kit-in-a-can.



500 JIC Cruiser®
12GA | 6-Shot | #51340



500 JIC Mariner®
12GA | 6-Shot | #52340

JIC (JUST IN CASE) SERIES FEATURES

- 6-Shot
- 12 Gauge
- Water-resistant tubes
- Shockwave JIC model available (See page 12)
- Standard pump-action features include dual extractors, steel-to-steel lockup, top-mounted ambidextrous safety, twin action bars, and anti-jam elevator

JIC (JUST IN CASE) SERIES | 3" Chamber

TYPE	ITEM #	GAUGE	2.75" CAPACITY	BARREL	FEATURES	CHOKES/BORE	OVERALL LENGTH*	TUBE FINISH	GUNMETAL FINISH	STOCK	APPROX. WEIGHT
500 JIC FLEX – 6-SHOT FLEX TLS Tool-less Locking System Components, Neoprene Carrying Case											
500 JIC FLEX	57340	12	5+1	18.5"	Soft Case, FLEX TLS Components	Cylinder Bore	28.12**	—	Matte Blue	FLEX Pistol Grip (Black)	5.5 lbs*
500 JIC – 6-SHOT Water-Resistant Storage Tube with Carrying Strap											
500 JIC Cruiser	51340	12	5+1	18.5"	Tube/Strap, Survival Kit-in-a-Can	Cylinder Bore	28.12**	OD Green	Matte Blue	Pistol Grip (Black)	5.5 lbs*
500 JIC Mariner	52340	12	5+1	18.5"	Tube/Strap, Multi-Tool & Knife	Cylinder Bore	28.12**	Intl. Orange	Marinecote	Pistol Grip (Black)	5.5 lbs*
590 SHOCKWAVE JIC – 6-SHOT Water-Resistant Storage Tube with Carrying Strap (see Page 12)											
590 JIC Shockwave w/Cerakote®	50656	12	5+1	14.375" Hvy-Walled	Tube/Strap	Cylinder Bore	26.37**	Intl. Orange	Cerakote (Stainless)	Shockwave Bird's-head Grip (Black)	5.3 lbs*

Overall Lengths & Weights*: For firearms only, excludes tube, case and/or accessories. **Cerakote:** Premium polymer-ceramic protective coating. Cerakote is a registered trademark of NIC Industries, Inc. **Stainless:** Stainless steel-colored finish. Shockwave is a trademark of Shockwave Technologies, LLC. All models include a free gun lock. Not all products are available in all states and jurisdictions. Check your state and local laws and regulations.





SHOTGUNS

MOSSBERG

SECURITY



590A1™ Pump-Action Shotguns



590A1 - M-LOK® Forend
12GA | 9-Shot | #50768



590A1 Adjustable - M-LOK® Forend
12GA | 9-Shot | #50769



590A1 - M-LOK® Forend
12GA | 7-Shot | #50765



590A1 - M-LOK® Forend
12GA | 7-Shot | #50766



590A1 Mariner® - M-LOK® Forend
12GA | 7-Shot | #50767

FOR SPECIFICATIONS, SEE PAGE 23



The Mossberg 590A1 is the most durable of our pump action shotguns, and has met US Military testing requirements (MIL-SPEC 3443G). It has seen duty in all branches of our country's military as well as in military and law enforcement agencies worldwide due to its proven endurance and sturdy construction. Combine its hearty construction with the sight, stock and forend configurations, the 590A1 is a popular choice for home defense applications.

590A1 FEATURES

- 7-Shot and 9-Shot (6-Shot for NFA/Class 3)
- 12 Gauge
- MIL-SPEC construction (MIL-S-3443G):
 - Heavy-Walled barrel
 - Metal trigger guard and safety button
 - Clean-out magazine tube
- Drilled and tapped receiver
- Various sight, stock, and forend configurations
- Parkerized or Marinecote™ finishes
- Standard pump-action features include dual extractors, steel-to-steel lockup, top-mounted ambidextrous safety, twin action bars, and an anti-jam elevator



Select 590A1 models feature a Mossberg® M-LOK® compatible forend with mounting slots on both sides and bottom, providing easy customization with a variety of available tactical accessories.

(M-LOK accessories, not included. M-LOK is a registered trademark of Magpul Industries Corp.)



590A1™ Pump-Action Shotguns



590A1 Magpul®
12GA | 9-Shot | #51773



590A1
12GA | 9-Shot | #51668



590A1 SPX
12GA | 9-Shot | #50771



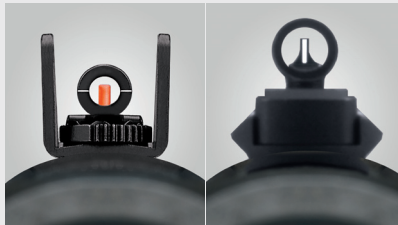


590A1 - NFA/Class 3
12GA | 6-Shot | #51689

14" 590A1 NFA/CLASS 3 - This NFA/Class 3 Short Barreled Shotgun has standard 590A1 MIL-SPEC 3443G construction, and also features a strapped forend, Ghost Ring sights, and +4 Shell Holder stock. Requires a Tax Stamp for transfers.



A cleanout magazine tube with cap is standard on all 590A1 models. 9-Shot models also come with a bayonet mounting lug



A majority of 590A1 models are fitted with adjustable Ghost Ring sights — standard (left) or XS rail-mounted (right), providing superior sighting for target acquisition in a variety of low-light situations.



The Mossberg signature top-mounted safety is conveniently located and highly visible for ease of use for right- or left-handed shooters.



The strapped forend on the NFA/Class 3 model helps keep the lead hand clear of the muzzle when cycling the action.

590A1 MIL-SPEC, 3" Chamber											
TYPE	ITEM #	GAUGE	2.75" CAP.	BARREL	SIGHTS	CHOKES	OVERALL LENGTH	LOP	METAL FINISH	STOCK/FOREND & FINISH	APPROX. WEIGHT
590A1 – 7-SHOT with M-LOK® FOREND											
7-Shot – M-LOK	50765	12	6+1	18.5" Hvy-Walled	Ghost Ring	Cylinder Tube	39.5"	13.87"	Parkerized	Synthetic Stock w/M-LOK Forend (Black)	7 lbs
7-Shot – M-LOK	50766	12	6+1	18.5" Hvy-Walled	Bead	Cylinder Bore	39.5"	13.87"	Parkerized	Synthetic Stock w/M-LOK Forend (Black)	7 lbs
7-Shot Mariner® – M-LOK	50767	12	6+1	18.5" Hvy-Walled	Bead	Cylinder Bore	39.5"	13.87"	Marinecote	Synthetic Stock w/M-LOK Forend (Black)	7 lbs
590A1 MAGPUL® – 9-SHOT Magpul® SGA® Adjustable LOP Stock with Interchangeable Cheek Riser Combs, MOE® Forend, Sling Plates											
9-Shot	51773	12	8+1	20" Hvy-Walled	XS Ghost Ring	Cylinder Bore	39.5**	12.25-14.25"	Parkerized	SGA Adj. Stock/Spacers – MOE Forend (Black)	7.25 lbs**
590A1 ADJUSTABLE – 9-SHOT with M-LOK® FOREND											
9-Shot – M-LOK	50769	12	8+1	20" Hvy-Walled	Ghost Ring	Cylinder Bore	36.12**	10.5-14.25"	Parkerized	6-Pos. Adj. Stock w/M-LOK Forend (Black)	7.75 lbs
590A1 SPX – 9-SHOT M9 Bayonet & Scabbard, Picatinny Top Rail, Rail-Mounted Ghost Ring Rear Sight/Winged Fiber-Optic Front Sight											
9-Shot	50771	12	8+1	20" Hvy-Walled	LPA Ghost Ring	Cylinder Bore	41"	13.87"	Parkerized	Synthetic Stock w/Corncob Forend (Black)	7 lbs
590A1 – 9-SHOT											
9-Shot – M-LOK	50768	12	8+1	20" Hvy-Walled	XS Ghost Ring	Cylinder Bore	41"	13.87"	Parkerized	Syn. +4 Shell Holder w/M-LOK Forend (Black)	7 lbs
9-Shot	51660	12	8+1	20" Hvy-Walled	Bead	Cylinder Bore	41"	13.87"	Parkerized	Synthetic Stock w/Corncob Forend (Black)	7 lbs
9-Shot	51663	12	8+1	20" Hvy-Walled	Ghost Ring	Cylinder Bore	41"	13.87"	Parkerized	Synthetic Stock w/Corncob Forend (Black)	7 lbs
9-Shot	51668	12	8+1	20" Hvy-Walled	Ghost Ring	Cylinder Bore	41"	13.87"	Parkerized	Syn. +4 Shell Holder Stock w/Corncob Forend (Black)	7 lbs
590A1 RETROGRADE – 9-SHOT Heat Shield (For more information on Retrograde models, see Pages 30-31)											
9-Shot	51665	12	8+1	20" Hvy-Walled	Ghost Ring	Cylinder Bore	41"	13.87"	Parkerized	Walnut Stock & Walnut Forend	7.25 lbs
590A1 NFA/CLASS 3 – 6-SHOT 14" Barrel, NFA/Class 3 Models require Tax Stamp for transfers											
6-Shot – NFA/Class 3	51689	12	5+1	14" Hvy-Walled	Ghost Ring	Cylinder Bore	33.75"	13.87"	Parkerized	Syn. +4 Shell Holder Stock w/Corncob Forend (Black)	6.75 lbs

*Overall Length: Measured when adjustable stock is at its minimum length of pull. LOP: Length of pull. 6-Pos. Adj: 6-Position adjustable stock. Length of pull is adjusted using the integrated lever. XS Ghost Ring: Picatinny rail-mounted rear ghost ring, and AR-style white stripe front sight. LPA Ghost Ring: Picatinny rail-mounted rear Ghost Ring and elevated front fiber optic sights. M-LOK: Mounting slots on forend's sides and bottom are compatible with M-LOK equipped accessories. +4 Shell Holder: Stock holds 4 extra rounds. **Weight: Measured without spacers, when adjustable stock is at its minimum length of pull. Magpul: Magpul, SGA, M-LOK and MOE are registered trademarks of Magpul Industries Corp. SGA Adj/Spacers: Magpul SGA stock's length of pull is adjusted in .5" increments using four stock spacer inserts. Cheek Riser: SGA stock comes with two interchangeable cheek riser combs: flush and .25" rise. Sling plates: Magpul receiver and barrel-mounted sling plates provided. NFA/Class 3: Subject to, and regulated under, the National Firearms Act (NFA). Requires a tax stamp for transfers. All models include a free gun lock. Not all products are available in all states and jurisdictions. Check your state and local laws and regulations.

590[®] Pump-Action Shotguns



590 Thunder Ranch/Optic-Ready
12GA | 7-Shot | #50781



Thunder Ranch shotguns were configured in collaboration with Clint Smith, (photo, at right) President and Director of the world-class Thunder Ranch facility.

The Thunder Ranch Series also includes a 940 Pro Tactical model. See Pages 34-35.



590 Persuader
.410 Bore | 7-Shot | #50700



590 Retrograde
12GA | 7-Shot | #52151



590 Persuader - M-LOK® Forend
12GA | 9-Shot | #50674



590 Persuader - Compact
20GA | 9-Shot | #50699



590 - Mariner®
12GA | 9-Shot with Pistol Grip Conversion Kit | #50299

FOR SPECIFICATIONS, SEE PAGE 26



The Mighty 590. With decades of performance and success stories under its belt, it's no surprise that the 590 is chosen for home defense needs worldwide.

The Mossberg 590 offers a range of customized stock and sight features right out of the box, with several models offering the flexibility of an added pistol grip kit. Other models utilize the FLEX System, with adjustable stocks and forends compatible with a robust lineup of FLEX accessories. Available in three gauges, the ruggedly-built 590 lineup offers a variety of capacities, finishes, and configurations.

590 FEATURES

- 7-Shot or 9-Shot
- 12 Gauge, 20 Gauge, and .410 Bore
- Drilled and tapped receiver
- Standard pump-action features include dual extractors, steel-to-steel lockup, top-mounted ambidextrous safety, twin action bars, and anti-jam elevator

Optic-Ready Convenience—
The 590 Thunder Ranch model features an innovative patent-pending cut receiver that accepts direct mounting of Shield RMSc-pattern micro dots. A cover plate is included for when an optic is not in use. (Micro dot optic shown, not included)



Many 590 models are offered with rear-adjustable/forward post standard Ghost Ring sights (left). The 590 SPX Adjustable model (right) has a top accessory rail-mounted rear-adjustable LPA® Ghost Ring sight with an elevated winged front fiber optic.



Many 590 shotguns come with an additional Pistol Grip Conversion Kit.



The 590 Series offers forend variety, including a Mossberg® M-LOK® compatible version with five rows of mounting slots on both sides and bottom, and the FLEX™ Tri-Rail with touchpad accommodation. Both styles offer easy customization for a variety of tactical accessories. (Accessories shown, not included. M-LOK is a registered trademark of Magpul Industries Corp.)



590 SPX Adjustable/Cruiser
12GA | 7-Shot with FLEX Stock & FLEX Pistol Grip | #50696



590 Adjustable/Cruiser
12GA | 7-Shot with FLEX Stock & FLEX Pistol Grip | #50691



590 models with the FLEX Adjustable Stock/Pistol Grip combination utilize a patented quick change connector that allows changing between components in just seconds, without tools. The stock provides nearly 4 inches of length-of-pull adjustment using the integrated lever, has a removable side saddle shell carrier, and an interchangeable recoil pad. Accessory recoil pads are available in a variety of thicknesses. (Pads shown, sold separately, see Page 88).

FOR SPECIFICATIONS, SEE PAGE 26

590[®] Pump-Action Shotguns



590 FLEX™ Adjustable
12GA | 9-Shot | #51672



Mossberg's signature top-mounted safety is conveniently located and highly visible for ease of use for right- or left-handed shooters.



All 590 models have a convenient clean-out magazine tube with screw-off cap for easy maintenance.



The 590 FLEX Adjustable features FLEX stock, forend and recoil pad connectors for fast and convenient customization using FLEX-enabled accessories—without tools.

590 | 3" Chamber

TYPE	ITEM #	GAUGE/ BORE	2.75" CAPACITY	BARREL/TYPE	SIGHTS	CHOKES	OVERALL LENGTH	LOP	METAL FINISH	STOCK/FOREND & FINISH	APPROX. WEIGHT
590 THUNDER RANCH/OPTIC-READY – 7-SHOT Optic-Ready Receiver with Cover Plate, Patriot Brown Cerakote, Logo-Engraved Receiver											
NEW 7-Shot	50781	12	6+1	18.5"	Fiber Optic	Cylinder Bore	38.5"	13"	Cerakote	Synthetic Stock & Corncob Forend (Black)	6.75 lbs
590 SHOTGUNS – 7-SHOT & 9-SHOT With Full-Length Stock											
7-Shot – Persuader	50778	12	6+1	18.5"	Bead	Cylinder Bore	39.5"	13.87"	Matte Blue	Synthetic Stock & Corncob Forend (Black)	6.75 lbs
9-Shot – Persuader/M-LOK	50674	12	8+1	20"	Ghost Ring	Cylinder Bore	41"	13.87"	Matte Blue	Synthetic Stock & M-LOK Forend (Black)	7.25 lbs
9-Shot – Persuader	50693	12	8+1	20"/Heat Shield	Ghost Ring	Cylinder Bore	41"	13.87"	Matte Blue	Synthetic Stock & Corncob Forend (Black)	7.75 lbs
9-Shot – Compact	50699	20	8+1	20"	Ghost Ring	Cylinder Bore	40"	13"	Matte Blue	Synthetic Stock & Corncob Forend (Black)	7.25 lbs
7-Shot – Persuader	50698	20	6+1	18.5"	Bead	Cylinder Bore	39.5"	13.87"	Matte Blue	Synthetic Stock & Corncob Forend (Black)	7 lbs
7-Shot – Persuader	50700	.410	6+1	18.5"	Bead	Cylinder Bore	39.5"	13.87"	Matte Blue	Synthetic Stock & Corncob Forend (Black)	7 lbs
590 RETROGRADE SHOTGUNS – 7-SHOT & 9-SHOT With Walnut Stock & Forend (For more information, see Pages 30-31)											
7-Shot – Retrograde	52151	12	6+1	18.5"/Heat Shield	Bead	Cylinder Bore	39.5"	13.87"	Matte Blue	Walnut Stock & Walnut Corncob Forend	7 lbs
9-Shot – Retrograde	52150	12	8+1	20"/Heat Shield	Bead	Cylinder Bore	41"	13.87"	Matte Blue	Walnut Stock & Walnut Corncob Forend	7.25 lbs
590 PERSUADER®/CRUISER® SHOTGUNS – 9-SHOT With Full-Length Stock & Pistol Grip Conversion Kit											
9-Shot – Persuader & Pistol Grip Kit	50694	12	8+1	20"/Heat Shield	Bead	Cylinder Bore	41" 29.62"	13.87" —	Matte Blue	Synthetic Stock & Corncob Forend, Pistol Grip Conversion Kit (Black)	7.75 lbs 5.75 lbs
9-Shot – Mariner® & Pistol Grip Kit	50299	12	8+1	20"	Bead	Cylinder Bore	41" 29.62"	13.87" —	Marinecote	Synthetic Stock & Corncob Forend, Pistol Grip Conversion Kit (Black)	7.75 lbs 5.75 lbs
590 FLEX™ ADJUSTABLE TACTICAL SHOTGUN – 9-SHOT With FLEX Connector Equipped 6-Position Stock & FLEX Tactical Forend											
9-Shot – FLEX	51672	12	8+1	20"	Bead	Cylinder Bore	38.12"	10.75-14.25"	Matte Blue	Synthetic FLEX 6-Pos Adj. Stock & FLEX Tactical Forend	7 lbs
590 ADJUSTABLE/CRUISER SHOTGUNS – 7-SHOT & 9-SHOT With FLEX Connector-Equipped 6-Position Stock & FLEX Connector-Equipped Pistol Grip											
7-Shot – FLEX 6-Pos Adj. & FLEX Pistol Grip	50691	12	6+1	18.5"	Bead	Cylinder Bore	36.37" 28.12"	10.75-14.25" —	Matte Blue	Synthetic FLEX 6-Pos Adj. Stock & Strapped Forend, FLEX Pistol Grip (Black)	6.75 lbs 5.75 lbs
7-Shot SPX – FLEX 6-Pos Adj. & FLEX Pistol Grip	50696	12	6+1	18.5"	Rail-Mounted LPA Ghost Ring	Cylinder Bore	36.37" 28.12"	10.75-14.25" —	Matte Blue	Synthetic FLEX 6-Pos Adj. Stock & Strapped Forend, FLEX Pistol Grip (Black)	7 lbs 5.75 lbs
9-Shot – FLEX 6-Pos Adj. & FLEX Pistol Grip	50695	12	8+1	20"	Bead	Cylinder Bore	37.75" 29.62"	10.75-14.25" —	Matte Blue	Synthetic FLEX 6-Pos Adj. Stock & Corncob Forend, FLEX Pistol Grip (Black)	7.75 lbs 6.5 lbs

*Overall Length: Measured when stock is at its minimum length of pull. LOP: Length of pull. Cerakote: Polymer-ceramic coating. Cerakote® is a registered trademark of NIC Industries, Inc. FLEX: FLEX stock, pistol grip or Tactical forend. Utilizes quick change Tool-less Locking System connectors. 6-Pos: 6-Position adjustable stock with removable side saddle shell holder. Length of pull is adjusted using the integrated lever. Stock has interchangeable recoil pad capability (Other thicknesses, sold separately, see page 89). LPA Ghost Ring: Picatinny rail-mounted rear Ghost Ring and elevated front fiber optic sights. M-LOK: Mounting slots on the forend's sides and bottom are compatible with M-LOK equipped accessories. Magpul and M-LOK are registered trademarks of Magpul Industries Corp. FLEX Tactical Forend: Forend has full-length bottom rail/two short side rails, ambidextrous touchpad accommodation. All models include a free gun lock. Not all products are available in all states and jurisdictions. Check your state and local laws and regulations.

590M[®] MAG-FED Pump-Action Shotguns

MOSSBERG



590M - Heat Shield
12GA | 10-Round Detachable
Magazine | #50206

Mag-Fed Done Right. With better balance, better construction, and better, more compact magazine designs than the competition, the Mossberg 590M is a superior detachable magazine shotgun. As the first production double-stack magazines made for pump-actions, they offer a shorter length vs. capacity than competitor's single-stack design.



590M
12GA | 10-Round Detachable
Magazine | #50205

590M MAG-FED FEATURES

- 12 Gauge with 10-Round detachable magazine
- Accessory magazines available in 5, 10, 15 and 20-round capacities (shown at right)
- Steel ambidextrous magazine release button and housing
- Stabilizing ribs on the magazine engage the receiver for secure lockup with mounted magazine
- Drilled and tapped receiver
- Standard pump-action features include dual extractors, steel-to-steel lockup, top-mounted ambidextrous safety, and twin action bars



590M Accessory Magazines



All-steel magazine release button and housing are optimally positioned in front of the trigger guard for quick, ambidextrous access for reloading — and will not interfere with cycling the action.



590M shotguns and magazines are uniquely designed, incorporating stabilizing ribs that engage the magazine directly to the receiver for a sure lockup.



Hardened steel feed lips and over-molded steel shell ramps ensure efficient feeding. Anti-cant rounded follower improves feeding; round limiter improves spring life.



Removable floor plate for easy cleaning; ASTM-A-228 music wire springs improve feeding, increase durability, and prolong service life.

590M MAG-FED | 2.75" Chamber, Logo Engraved Receiver

TYPE	ITEM #	GA.	2.75" CAPACITY	BARREL	SIGHTS	CHOKES	OVERALL LENGTH	LOP	METAL FINISH	STOCK/FINISH	APPROX. WEIGHT
590M	50205	12	10+1	18.5" Hvy-Walled	Bead	Cylinder Bore	39.5"	13.87"	Matte Blue/Logo Embellished Receiver	Synthetic (Black)	7.75 lbs
590M - Heat Shield	50206	12	10+1	18.5" Hvy-Walled/Heat Shield	Ghost Ring	Cylinder Tube	39.5"	13.87"	Matte Blue/Logo Embellished Receiver	Synthetic (Black)	7.75 lbs

Chamber: 590M shotguns require the use of 2.75" shotshells. **LOP:** Length of pull. **Weight:** Calculated with empty mounted 10-round magazine. All models include a free gun lock. Not all products are available in all states and jurisdictions. Check your state and local laws and regulations.

590M Shockwave also available, see page 15.

590M MAG-FED ACCESSORY MAGAZINES

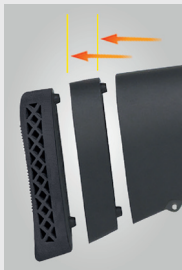
TYPE	ITEM #	GA.	2.75" CAPACITY	TYPE	DIMENSIONS	MATERIAL/CONSTRUCTION	FEED LIPS	APPROX. WEIGHT
5-Round Magazine	95137	12	5	Double-Stack	2.5"L x 3.5"W x 5.375"H	High-Impact Polymer Tower, with Proprietary Self-Lubricating Polymer Body	Hardened Steel	0.96 lbs
10-Round Magazine	95138	12	10	Double-Stack	2.5"L x 3.5"W x 8.0"H	High-Impact Polymer Tower, with Proprietary Self-Lubricating Polymer Body	Hardened Steel	1.26 lbs
15-Round Magazine	95139	12	15	Double-Stack	2.5"L x 3.5"W x 10.375"H	High-Impact Polymer Tower, with Proprietary Self-Lubricating Polymer Body	Hardened Steel	1.46 lbs
20-Round Magazine	95140	12	20	Double-Stack	2.5"L x 3.5"W x 12.625"H	High-Impact Polymer Tower, with Proprietary Self-Lubricating Polymer Body	Hardened Steel	1.70 lbs

Magazines: Work exclusively with Mossberg 590M Shotguns, using 2.75" shotshells. **Weights:** Calculated without shotshells. **Patented:** Design components including double-stack design are covered by patents owned by Adaptive Tactical LLC. **Self-lubricating:** Dupont proprietary self-lubricating polymer body improves feeding and reduces internal friction. Not all products are available in all states and jurisdictions. Check your state and local laws and regulations.

590S[®] Pump-Action Shotguns



NEW 590S Magpul® - Holosun®
Micro Dot Combo
12GA | #51606



Offering a 12 to 13" length of pull range, the new 590S Compact is a perfect fit for a variety of shooters.



NEW 590S Compact/Optic-Ready
12GA | #51607



590S Optic-Ready
12GA | #51604



590S Optic-Ready
12GA | #51604



590S
12GA | #51602



590S FEATURES

- 12 Gauge, 1.75," 2.75," or 3" shell cycling capability
- Dual Extractors, Twin Action Bars, Positive Steel-to-steel Lockup, Anti-jam Elevator
- Top-mounted Ambidextrous Safety
- Convenient Cleanout Magazine Tube with Cap



Most 590S models offer optic-ready convenience.

Innovative patent-pending receiver cuts allow 590S shotguns to accept low-profile direct mounting of Shield RMSc-pattern micro dot sights, for improved eye alignment and target acquisition. A cover plate is included for when a sight is not mounted. (Micro dot sight shown, available on Holosun Micro Dot Combo)



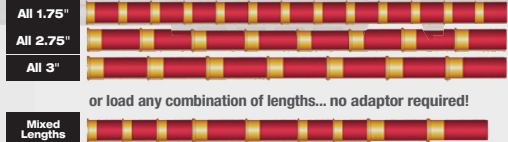
590S Series: The Ultimate in Shooting Flexibility.

590S models feature a patented design that allows the cycling of 1.75," 2.75," or 3" shells, interchangeably, right out of the box. No adaptor required. Pick one shotshell length for specific shooting needs, or simultaneously load any combination with the 590S.



The new 590S Series provides complete shotshell flexibility—Load a common shell length based on specific use...

Shell Compatibility Examples



or load any combination of lengths... no adaptor required!



Designed for Flexibility. A redesigned Elevator and Bolt Slide, plus the addition of an energy-absorbing Bumper, makes the 590S capable of cycling a range of 12GA shells — straight out of the box.



590S 3" Chamber, Patented Design with 1.75" Short Shell, 2.75," and 3" Cycling Capability, Logo Engraved Receiver														
TYPE	ITEM #	GAUGE	MAXIMUM CAPACITIES* BY SHELL LENGTH			BARREL	SIGHTS	CHOKES	OVERALL LENGTH*	LOP	METAL FINISH	STOCK/FOREND & FINISH	APPROX. WEIGHT	
			1.75" SHELLS	2.75" SHELLS	3" SHELLS									
590S MAGPUL® - HOLOSUN® MICRO DOT COMBO			Magpul® SGA® Adj. LOP Stock, MOE® Forend, Holosun® HS407K, 1X, 6 MOA Dot Reticle, 12 Brightness Settings, Parallax-free Optic/Unlimited Eye Relief											
NEW	18.5" Barrel	51606	12	9+1	6+1	5+1	18.5"	Bead/Micro Dot	Cylinder Tube	38"	12.25-14.25"	Matte Blue	SGA Adj Stock/Spacers & MOE Forend (Gray)	6.75 lbs
590S OPTIC-READY			Optic-Ready Receiver with Cover Plate											
NEW	18.5" Compact	51607	12	9+1	6+1	5+1	18.5"	Bead	Cylinder Bore	37.75"	12-13"	Matte Blue	Variable LOP Stock & Corncob Forend (Black)	6.75 lbs
	18.5" Barrel	51605	12	9+1	6+1	5+1	18.5"	Bead	Cylinder Bore	39.5"	13.87"	Matte Blue	Synthetic Stock & Corncob Forend (Black)	6.75 lbs
	20" Barrel	51604	12	13+1	8+1	7+1	20"	Bead	Cylinder Tube	41"	13.87"	Matte Blue	Synthetic Stock & M-LOK Forend (Black)	7.25 lbs
590S														
	20" Barrel	51602	12	13+1	8+1	7+1	20"	Ghost Ring	Cylinder Tube	41"	13.87"	Matte Blue	Synthetic Stock & M-LOK Forend (Black)	7.25 lbs

590S Shockwave models also available, see pages 12-14.

Maximum Capacities*: Depending upon shotshell tolerance variations and firearms model configuration, total capacity may be reduced by one shotshell. As a firearm owner or potential owner, you are responsible for complying with all applicable laws including but not limited to any state or local restrictions regarding possession or capacity. Check with your local retailer or State Police for laws that may be applicable to you. Since such regulations are subject to change, state and local authorities are in the best position to advise on such matters. **Overall Length:** Measured at minimum length of pull for adjustable/variable LOP stocks. **Variable LOP:** Variable length of pull between 12-13" by use of include stock spacer. **M-LOK:** Mounting slots on forend's sides and bottom are compatible with M-LOK equipped accessories. ****Weight:** Measured without spacers, when adjustable stock is at its minimum length of pull. **Magpul:** Magpul, SGA, M-LOK and MOE are registered trademarks of Magpul Industries Corp. **SGA Adj/Spacers:** Magpul SGA stock's length of pull is adjusted in .5" increments using four stock spacer inserts. Holosun is a registered trademark of Holosun Industries, Inc. Shockwave is a trademark of Shockwave Technologies, LLC. All models include a free gun lock. Not all products are available in all states and jurisdictions. Check your state and local laws and regulations.

RETROGRADE SERIES

Pump-Action Shotguns



590® Retrograde
12GA | 9-Shot | #52150



590A1™ Retrograde
12GA | 9-Shot | #51665



500® Persuader® Retrograde
12GA | 6-Shot | #50429





590® Retrograde
12GA | 7-Shot | #52151



A throwback to the look of our first tactical pumps, Retrograde models feature a walnut stock with checkered grip and vented recoil pad, and matching forend. Models also include the features that have made Mossberg the choice for millions of users worldwide, including an ambidextrous safety, dual extractors, positive steel-to-steel lockup, twin action bars, and an anti-jam elevator for smooth operation.

RETROGRADE SERIES FEATURES

- **590:** 12GA, 7-Shot with Heat Shield or 9-Shot with Heat Shield and Bayonet Lug, Magazine Clean-out Tube, Matte Blue finish
- **590A1:** 12GA, 9-Shot with Heat Shield and Bayonet Lug, Ghost Ring Sights, MIL-SPEC 3443G Construction: Heavy-Walled Barrel, Metal Trigger Guard & Metal Safety Button, Magazine Clean-out Tube, Parkerized finish
- **500:** 12GA, 6-Shot, Blued Finish

RETROGRADE SERIES 3" Chamber, Walnut Stock & Forend											
TYPE	ITEM #	GAUGE	2.75" CAP.	BARREL	SIGHTS	BORE	OVERALL LENGTH	LOP	METAL FINISH	STOCK/FOREND & FINISH	APPROX. WEIGHT
590 RETROGRADE Heat Shield											
7-Shot	52151	12	6+1	18.5"/Heat Shield	Bead	Cylinder Bore	39.5"	13.87"	Matte Blue	Walnut Stock & Walnut Corncob Forend	7 lbs
9-Shot	52150	12	8+1	20"/Heat Shield	Bead	Cylinder Bore	41"	13.87"	Matte Blue	Walnut Stock & Walnut Corncob Forend	7.25 lbs
590A1 RETROGRADE Heat Shield											
9-Shot	51665	12	8+1	20" Hvy Wall/Heat Shield	Ghost Ring	Cylinder Bore	41"	13.87"	Parkerized	Walnut Stock & Walnut Corncob Forend	7.25 lbs
500 PERSUADER RETROGRADE											
6-Shot	50429	12	5+1	18.5"	Bead	Cylinder Bore	39.5"	13.87"	Blue	Walnut Stock & Walnut Corncob Forend	6.75 lbs
LOP: Length of pull. All models include a free gun lock. Not all products are available in all states and jurisdictions. Check your state and local laws and regulations.											

500[®] ATI[®] TACTICAL Pump-Action Shotguns



MOSSBERG



500 ATI Tactical - Destroyer Gray
12GA | 6-Shot | #50431



500 ATI Tactical - Flat Dark Earth
12GA | 6-Shot | #50424



Mossberg has teamed with ATI to outfit these models with an exceptional set of coordinated components: T3[®] TactLite[®] 6-Position Adjustable Stock, Pistol Grip, Heat Shield, Akita[®] Forend, Receiver-Mounted and Barrel-Mounted Rails, Halo[®] Side Saddle with nine polymer Add-A-Shell[®] Repositionable Shell Holders

500 ATI FEATURES

- 6-Shot
- 12 Gauge
- Adjustable stock (3.87" LOP range)
- Standard pump-action features include dual extractors, steel-to-steel lockup, twin action bars, and anti-jam elevator
- Ambidextrous top-mounted safety



Functional, High-End 500 ATI Features: A removable pair of front accessory rails, heat shield-mounted winged sight, receiver-mounted side saddle shellholder, rubberized rear grip insert, and adjustable stock and comb.

500 ATI TACTICAL | 3" Chamber

TYPE	ITEM #	GAUGE	2.75" CAP.	BARREL	SIGHTS	CHOKES	OVERALL LENGTH	LOP	METAL FINISH	STOCK/FOREND & FINISH	APPROX. WEIGHT
500 ATI TACTICAL** – 6-SHOT											
6-Shot – Adjustable**	50431	12	5+1	18.5"+ ATI Heat Shield	Winged Post & Bead	Cylinder Bore	36.37**	10.75-14.62"	Matte Blue	ATI 6-Pos. Adj. Synthetic Stock & Akita Forend (Destroyer Gray & Black)	6.75 lbs
6-Shot – Adjustable**	50424	12	5+1	18.5"+ ATI Heat Shield	Winged Post & Bead	Cylinder Bore	36.37**	10.75-14.62"	Matte Blue	ATI 6-Pos. Adj. Synthetic Stock & Akita Forend (Flat Dark Earth & Black)	6.75 lbs

****DEALERS CAN ONLY ORDER 500 ATI TACTICAL MODELS (#50424 AND #50431) THROUGH A TALO GROUP DISTRIBUTOR. VISIT WWW.TALOINC.COM FOR MORE INFORMATION.**

***Overall Length:** Measured when adjustable stock is at its minimum length of pull. **LOP:** Length of pull. **ATI Heat Shield:** Halo heat shield has dovetail mount twin front 2" rails, and front winged post sight. **Side Saddle:** Halo side saddle comes with 9 removable/repositionable polymer Add-A-Shell units and removable top rail. **ATI 6-position Adj.:** TactLite T3 6-position adjustable stock with X2 recoil-reducing rubber rear pad and grip pad, adjustable cheek riser (1" vertically). Stock's length of pull is adjusted using the integrated lever. ATI, TactLite, Halo, Akita, and Add-A-Shell are trademarks of Advanced Technology International. All models include a free gun lock. Not all products are available in all states and jurisdictions. Check your state and local laws and regulations.

MAVERICK® 88 Pump-Action Shotguns



Maverick 88 - Security
12GA | 8-Shot | #31048



Maverick 88 - Security
12GA | 6-Shot | #31027



ATI Top-Folding Stock folds/unfolds using a quick release button, and securely locks into either position. Folds compactly for ease of use in tight quarters or convenient transport. Shotgun fires in either the folded or unfolded position.

Maverick: the utility player of pump-action shotguns. Affordable and reliable, these diverse models are equally well-suited for home protection as combing through the woods or traversing upland fields.

MAVERICK 88 FEATURES

- 6-Shot and 8-Shot
- 12 Gauge
- Standard pump-action features include dual extractors, steel-to-steel lockup, twin action bars, and anti-jam elevator
- Cross-bolt safety



Maverick 88 - Security/Field Combo
12GA | 6-Shot | #31014



Maverick 88 pump-action models are fully interchangeable with Mossberg 500 barrels (within gauge/capacity). A diverse selection of accessory barrels are available, including hunting and sporting use.



Maverick 88 pump-actions feature a cross-bolt safety with a red "safety off" indicator.

MAVERICK 88 | 3" Chamber

TYPE	ITEM #	GAUGE	2.75" CAP.	BARREL	SIGHTS	CHOKES	OVERALL LENGTH	LOP	METAL FINISH	STOCK/FOREND & FINISH	APPROX. WEIGHT
MAVERICK 88 - SECURITY											
6-Shot	31022	12	5+1	18.5"	Bead	Cylinder Bore	39.5"	14.5"	Blue	Synthetic Stock w/Corncob Forend (Flat Dark Earth)	6.25 lbs
6-Shot	31023	12	5+1	18.5"	Bead	Cylinder Bore	39.5"	14.5"	Blue	Synthetic Stock w/Corncob Forend (Black)	6.25 lbs
8-Shot	31048	12	7+1	20"	Bead	Cylinder Bore	41"	14.5"	Blue	Synthetic Stock w/Corncob Forend (Flat Dark Earth)	6.5 lbs
8-Shot	31046	12	7+1	20"	Bead	Cylinder Bore	41"	14.5"	Blue	Synthetic Stock w/Corncob Forend (Black)	6.5 lbs

MAVERICK 88 w/TOP-FOLDING STOCK - SECURITY

6-Shot - Folding Stock	31027	12	5+1	18.5"	Bead	Cylinder Bore	39.5"	14.5"	Blue	ATI Shotforce Top-Folding Stock w/Corncob Forend (Black)	6 lbs
------------------------	-------	----	-----	-------	------	---------------	-------	-------	------	--	-------

MAVERICK 88 SECURITY/FIELD COMBO | 3" Chamber

TYPE	ITEM #	GAUGE	2.75" CAP.	BARREL	SIGHTS	CHOKES	OVERALL LENGTH	LOP	METAL FINISH	STOCK & FINISH	APPROX. WEIGHT
6-Shot	31014	12	5+1	18.5"	Bead	Cylinder Bore	39.5"	14.5"	Blue	Synthetic Stock w/Corncob Forend (Black)	6.25 lbs
				28" VR	Bead	Modified Tube	47.75"	14.5"	Blue		7 lbs

VR: Vent rib. LOP: Length of pull. ATI and Shotforce are trademarks of Advanced Technology International. All models include a free gun lock. Not all products are available in all states and jurisdictions. Check your state and local laws and regulations.

940[®] PRO TACTICAL Autoloading Shotguns



NEW

**940 Pro Tactical -
Thunder Ranch**
12GA | 8-Shot | #85171



Among the 940 Pro Tactical Thunder Ranch shotgun's unique features, dual-sided QD swivel mounting ports adorn the shotgun's stock and forend for sling mounting convenience.



Thunder Ranch shotguns were configured in collaboration with Clint Smith, (photo, at right) President and Director of the world-class Thunder Ranch facility.

The Thunder Ranch Series also includes a 590 pump-action model. See Pages 24-26.



NEW

940 Pro Tactical - Cerakote[®] (OD Green)
12GA | 8-Shot | #85173



NEW

940 Pro Tactical - Cerakote[®] (Flat Dark Earth)
12GA | 8-Shot | #85172



940 Pro Tactical - Holosun[®] Micro Dot Combo
12GA | 8-Shot | #85161



940 Pro Tactical
12GA | 8-Shot | #85152
Also available:
12GA | 5-Shot | #85163



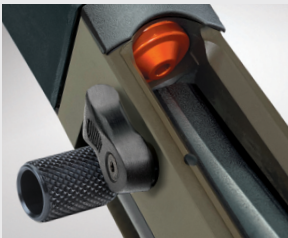
940 PRO TACTICAL FEATURES

- 12 Gauge, 8-Shot or 5-Shot, 18.5" barrel
- Cleaner-running gas-vent system, longer cleaning intervals
- Ergonomic bolt release button, also allows for quick-empty unloading
- Drilled and tapped receiver
- Ambidextrous top-mounted safety

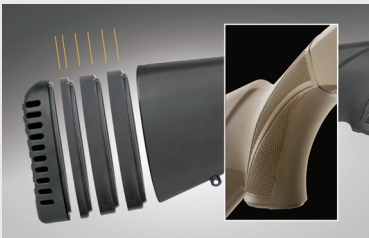


940 Pro Tactical - Optic-Readiness. Patent-pending receiver cuts with a removable plate allow direct mounting of Shield RMSc-pattern micro dot sights— for improved eye alignment and target acquisition.

Tactical Functionality. Besides being optic-ready out-of-the-box, other functional features include: a knurled charging handle, an oversized ergonomic bolt release, a barrel clamp with swivel stud and dual-sided M-LOK® slots for accessory customization, and a front fiber optic sight. Select 940 Pro Tactical barrels are threaded for use with Accu-Choke interchangeable choke tubes — a cylinder constriction tube comes installed.



Built for Ease of Loading. An enlarged and beveled loading port was specifically configured for ease of loading; features an anodized bright orange follower, and an elongated, pinch-free elevator.



Adjustable LOP Stock is user-adjustable (1.75" range), and adjustable for drop at comb/cast using incremental stock shims. It is self-draining, and has aggressive Mossberg signature texturing on the grip and the slim, ergonomic forend.



Cleaner-Running Gas System. Redesigned 940 gas system allows faster, more reliable cycling at much greater cleaning intervals— up to 1500 rounds.



Premium Cerakote Finishes. Available in three colors, select models feature Cerakote® polymer-ceramic coating, providing superior abrasion and wear resistance and added anti-corrosion protection.

940 PRO TACTICAL 3" Chamber, Optic-Ready Receiver, Premium Coatings/Finishing, Durable Fast-Cycling Gas System, Enlarged/Beveled Loading Port, Barrel Clamp w/M-LOK® Compatibility											
TYPE	ITEM #	GAUGE	2.75" CAP.	BARREL	SIGHTS	CHOKES	OVERALL LENGTH*	LOP	METAL FINISH	STOCK & FINISH	APPROX. WEIGHT
940 PRO TACTICAL - THUNDER RANCH Logo-Engraved Receiver, QD Swivel Mounting Ports on Stock & Forend											
NEW 8-Shot - Cerakote	85171	12	7+1	18.5"	Front FO	Cylinder Bore	37"	12.5-14.25"	Cerakote (Patriot Brown)	Adj. LOP/Cast/Drop (Patriot Brown)	7.25 lbs
940 PRO TACTICAL											
NEW 8-Shot - Cerakote	85173	12	7+1	18.5"	Front FO	Cylinder Tube (Accu-Choke)	37"	12.5-14.25"	Cerakote (OD Green)	Adj. LOP/Cast/Drop (Black)	7.25 lbs
NEW 8-Shot - Cerakote	85172	12	7+1	18.5"	Front FO	Cylinder Tube (Accu-Choke)	37"	12.5-14.25"	Cerakote (Flat Dark Earth)	Adj. LOP/Cast/Drop (Black)	7.25 lbs
8-Shot	85152	12	7+1	18.5"	Front FO	Cylinder Tube (Accu-Choke)	37"	12.5-14.25"	Matte Blue	Adj. LOP/Cast/Drop (Black)	7.25 lbs
NEW 5-Shot*	85163	12	4+1	18.5"	Front FO	Cylinder Tube (Accu-Choke)	37"	12.5-14.25"	Matte Blue	Adj. LOP/Cast/Drop (Black)	7 lbs
940 PRO TACTICAL - HOLOSUN® MICRO DOT COMBO Holosun® HS407K, 1X, 6 MOA Dot Reticle, 12 Brightness Settings, 50K Hours Battery Life, Parallax-free Optic with Unlimited Eye Relief											
8-Shot Combo	85161	12	7+1	18.5"	Front FO/Micro Dot	Cylinder Tube (Accu-Choke)	37"	12.5-14.25"	Matte Blue	Adj. LOP/Cast/Drop (Black)	7.25 lbs

*Overall Length: Measured when stock is set at its minimum length of pull. LOP: Length of pull. Accu-Choke: Cylinder choke tube is Accu-Choke compatible. *5-Shot: 5-Shot model does not have extended magazine tube or barrel clamp. Cerakote: Polymer-ceramic coating. Cerakote® is a registered trademark of NIC Industries, Inc. Holosun is a registered trademark of Holosun Technologies, Inc. M-LOK is a registered trademark of Magpul Industries Corp. All models include a free gun lock. Not all products are available in all states and jurisdictions. Check your state and local laws and regulations.





SHOTGUNS

MOSSBERG

FIELD / SPORTING



500[®] FIELD Pump-Action Shotguns



NEW 500 Turkey - Holosun[®] Micro Dot Combo
410 Bore | 20" | #50133
Also available—Shotgun Only
410 Bore | 24" | #50107

Optic-Ready, Hunt-Ready Micro Dot Combos
Designed with patent-pending receiver cuts that accept low-profile direct mounting of Shield RMSc-pattern sights, two new 500 shotguns also come outfitted with a Holosun[®] HS407K micro dot for straight out-of-the-box hunting convenience.



NEW 500 Turkey - Holosun[®] Micro Dot Combo
20GA | 20" | #54342
Also available—Shotgun Only
20GA | 22" | #54337



500 Retrograde - Field
12GA | #50430



500 All-Purpose
12GA | #56420



500 All-Purpose
.410 Bore | #50104



500 Tactical Turkey
12GA | #53265



Mossberg FLEX

500 FLEX[™] All-Purpose
12GA | #50121



Mossberg's 500 Series sets the standard for hunting pump-actions. A short cycling time lets you identify and point to a new target quickly and efficiently, and their overall simplicity means higher durability at a lower cost. The 500 is the most versatile shotgun platform available on the market — it's no wonder that over 12 million have been sold.



500 FIELD FEATURES

- 6-Shot
- 12 Gauge, 20 Gauge, and .410 Bore
- All-Purpose Field and Turkey options
- Standard pump-action features include dual extractors, steel-to-steel lockup, top-mounted ambidextrous safety, twin action bars, and anti-jam elevator
- Interchangeable chokes (excludes All-Purpose .410)
- Range of accessory barrels to expand your shooting seasons
- 500 FLEX model utilizes quick-release stock, forend and recoil pad connectors to easily switch shooting applications. See Page 88 for more information on FLEX accessories.



The 500 Retrograde Field sports the classic, throwback look of walnut furniture, a nod to Mossberg's earliest pump-actions.



500 Field models include Bead and Fiber Optic sight offerings.

500 FIELD 3" Chamber											
TYPE	ITEM #	GAUGE/BORE	2.75" CAP.	BARREL	SIGHTS	CHOKES	OVERALL LENGTH	LOP	FINISH	STOCK	APPROX. WEIGHT
500 – TURKEY - HOLOSUN® MICRO DOT COMBO Holosun® HS407K, 1X, 6 MOA Dot Reticle, 12 Brightness Settings, 50K Hours Battery Life, Parallax-free Optic with Unlimited Eye Relief											
NEW Turkey/OR Combo	54342	20	5+1	20" VR	Fiber Optic/Micro Dot	X-Factor Ptd Tube	39.25"	13.87"	MO Greenleaf	Synthetic (Greenleaf)	6.5 lbs
NEW Turkey/OR Combo	50133	.410	5+1	20" VR	Fiber Optic/Micro Dot	X-Full Extended Tube	43.75"	13.87"	MO Greenleaf	Synthetic (Greenleaf)	6 lbs
500 – TURKEY/OPTIC-READY Optic-Ready Receiver w/Cover Plate											
Turkey/Optic-Ready	54337	20	5+1	22" VR	Fiber Optic	X-Factor Ptd Tube	39.25"	13.87"	MO Greenleaf	Synthetic (Greenleaf)	6.75 lbs
Turkey/Optic-Ready	50107	.410	5+1	24" VR	Fiber Optic	X-Full Extended Tube	43.75"	13.87"	MO Greenleaf	Synthetic (Greenleaf)	6.25 lbs
500 – TURKEY											
Turkey	52280	12	5+1	20" VR	Fiber Optic	X-Factor Ptd Tube	40.25"	13.87"	MO Obsession	Synthetic (Obsession)	7 lbs
500 TACTICAL TURKEY 6-Position Adjustable LOP Stock w/FLEX Pad, Shellholder											
Turkey	53265	12	5+1	20" VR	Fiber Optic	X-Factor Ptd Tube	36.5"	10.75–14.62"	MO Obsession	6-Pos Adj. Stock w/FLEX Pad, Shellholder	7.25 lbs
500 RETROGRADE – FIELD Finely Checkered, High-Gloss Walnut Stock and Forend, Classic Red Butt Pad with Pachmayr Spacer, Jeweled Bolt											
All Purpose	50430	12	5+1	28" VR	Dual Bead	Accu-Set	47.5"	13.87"	Blue	Walnut Stock and Corncob Forend	7.5 lbs
500 – ALL PURPOSE FIELD											
All Purpose	50120	12	5+1	28" VR	Dual Bead	Accu-Set	47.5"	13.87"	Blue	Wood	7.5 lbs
All Purpose	56420	12	5+1	28" VR	Dual Bead	Accu-Set	48.5"	13.87"	Matte Blue	Synthetic (Black)	7.5 lbs
All Purpose	50136	20	5+1	26" VR	Dual Bead	Accu-Set	45.5"	13.87"	Blue	Wood	7 lbs
All Purpose	56436	20	5+1	26" VR	Dual Bead	Accu-Set	45.25"	13.87"	Matte Blue	Synthetic (Black)	7 lbs
All Purpose	50104	.410	5+1	24" VR	Dual Bead	Fixed Full	43.75"	13.87"	Blue	Wood	6.25 lbs
500 FLEX ALL-PURPOSE FLEX System Connectors on Stock, Forend, and Recoil Pad											
500 FLEX	50121	12	5+1	28" VR	Dual Bead	Accu-Set	48.25"	14.25"	Matte Blue	FLEX Std. Synthetic (Black)	7.5 lbs

*Overall Length: Measured at minimum length of pull. LOP: Length of pull. Accu-Set: Includes Full, Modified and Improved Cylinder choke tubes. VR: Vent rib. 6-Pos: 6-position adjustable LOP stock with side-saddle shellholder and adjustable comb. Length of pull is adjusted using integrated lever. Stock uses FLEX recoil pad, compatible with other FLEX pads (sold separately). FLEX: Utilizes FLEX System Stock, Forend, and Recoil Pad components with quick-change connectors. See Page 88 for FLEX Accessories. MO: Mossy Oak Brand Camo. Mossy Oak, Greenleaf, and Obsession are trademarks of Haas Outdoors, Inc. Holosun: Holosun is a registered trademark of Holosun Technologies, Inc. All models include a free gun lock.

500® FIELD COMBOS Pump-Action Shotguns





Several 500 Field Combo models feature Mossberg's Dual Comb® stock, which is supplied with interchangeable combs—high-profile (for sighting with mounted optics) or low-profile (for sighting down the barrel)—in Wood and Synthetic.



Mounting optics is a snap with the Integral Scope Base/Cantilever barrel found on several 500 Slug models. Improves eye alignment and provides a quicker return to zero season after season. Two models include a 2.5x20 scope (shown above).



500 Combo shotgun sight offerings include (from top): Adjustable Rifle (Slug); plus Bead and Fiber Optic selections.

Durable and easy to maintain, these highly adaptable pump-action shotguns in two-barrel combo sets cover multiple seasons and disciplines.

500 FIELD COMBO FEATURES

- Field models with accessory Slugster® or Security barrel
- 6-Shot
- 12 Gauge and 20 Gauge
- Standard pump-action features include dual extractors, steel-to-steel lockup, top-mounted ambidextrous safety, twin action bars, and anti-jam elevator

500 FIELD COMBOS | 3" Chamber, Multi-Discipline Two-Barrel Set

TYPE	ITEM #	GAUGE	2.75" CAP.	BARREL	SIGHTS	CHOKES	OVERALL LENGTH	LOP	FINISH	STOCK	APPROX. WEIGHT
500 COMBOS											
Turkey/Deer Combo	53270	12	5+1	24" VR	Fiber Optic	XX-Full	43.5"	13.87"	MO Break-Up Country	Synthetic	7.5 lbs
		12	5+1	24" Fluted	Adj. Rifle	Fully Rifled Bore	43.5"	13.87"	MO Break-Up Country		7.5 lbs
Field/Deer Combo	54243	12	5+1	28" VR	Dual Bead	Accu-Set	47.5"	13.87"	Blue	Wood (Dual Comb)	7.5 lbs
		12	5+1	24"	ISB	Fully Rifled Bore	43.5"	13.87"	Blue		7.25 lbs
Field/Deer Combo	54264	12	5+1	28" VR	Dual Bead	Accu-Set	47.5"	13.87"	Blue	Wood	7.5 lbs
		12	5+1	24"	Adj. Rifle	Fully Rifled Bore	43.5"	13.87"	Blue		7.25 lbs
Field/Security Combo	54169	12	5+1	28" VR	Dual Bead	Accu-Set	47.5"	13.87"	Blue	Wood	7.5 lbs
		12	5+1	18.5"	Bead	Cylinder Bore	39.5"	—	Blue		6.75 lbs
Field/Deer Combo	52282	12	5+1	28" VR	Dual Bead	Accu-Set	47.5"	13.87"	MO Break-Up Country	Synthetic	7.5 lbs
		12	5+1	24"	Adj. Rifle	Fully Rifled Bore	43.5"	13.87"	MO Break-Up Country		7.25 lbs
Field/Deer Combo	54282	20	5+1	28" VR	Dual Bead	Accu-Set	45.5"	13.87"	Blue	Wood	7 lbs
		20	5+1	24"	Adj. Rifle	Fully Rifled Bore	43.5"	13.87"	Blue		7 lbs
Field/Deer Combo	54183	20	5+1	26" VR	Dual Bead	Accu-Set	45.5"	13.87"	MO Break-Up Country	Synthetic	7 lbs
		20	5+1	24"	Adj. Rifle	Fully Rifled Bore	43.5"	13.87"	MO Break-Up Country		7 lbs

500 SCOPED COMBOS

Field/Deer Combo	54047	20	5+1	26" VR	Dual Bead	Accu-Set	47.5"	13.87"	Matte Blue	Synthetic (Dual Comb)	7 lbs
		20	5+1	24"	ISB w/2.5x20	Fully Rifled Bore	43.5"	13.87"	Matte Blue		7 lbs
Field/Deer Combo	58244	12	5+1	28" VR	Dual Bead	Accu-Set	47.5"	13.87"	Matte Blue	Synthetic (Dual Comb)	7 lbs
		12	5+1	24"	ISB w/2.5x20	Fully Rifled Bore	43.5"	13.87"	Matte Blue		7 lbs

*Overall Length: Measured at minimum length of pull. LOP: Length of pull. Accu-Set: Includes Full, Modified and Improved Cylinder choke tubes. VR: Vent rib. ISB: Integral scope base (Cantilevered). MO: Mossy Oak Brand Camo. Mossy Oak and Break-Up are registered trademarks of Haas Outdoors, Inc. All models include a free gun lock.

500[®]/505[™] BANTAM Pump-Action Shotguns



500 Bantam
12GA | 13" LOP | #52132



500 Bantam
.410 Bore | 13" LOP | #50112



500 Bantam Field/Deer Combo
20GA | 13" LOP | #54188



500 Bantam FLEX Field/Deer Combo
20GA | 12.75-14.62" LOP | #54330



500 Bantam FLEX
20GA | 12.5" LOP | #54334



505 Bantam
20GA | 12" LOP | #57110



505 Bantam
.410 Bore | 13" LOP | #57120



At Mossberg, we're dedicated to ensuring that those who are ready for the responsibility of hunting are safely outfitted with a firearm that fits properly and comfortably. Mossberg Bantam pump-actions have ergonomics built-in: EZ-Reach[™] forends for a shorter reach when cycling the action on select models, a smaller grip for easy trigger reach, and more compact lengths of pull.

500 BANTAM, 500 FLEX, & 505 BANTAM FEATURES

- 6-Shot (500) or 5-Shot (505)
- 12 and 20 Gauge, and .410 Bore
- EZ-Reach[™] forends on select models for easy cycling, and smaller grip and shorter reach to trigger
- Shorter barrels provide a light-weight, balanced feel
- Multi-season 2-barrel Combos
- Standard pump features include dual extractors, steel-to-steel lockup, twin action bars, anti-jam elevator, and a top-mounted ambidextrous safety

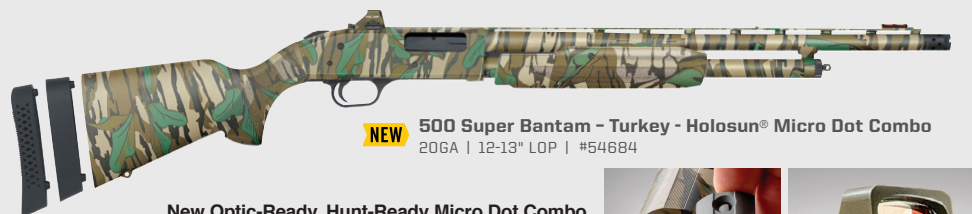
Select Bantam shotguns feature Mossberg's EZ-Reach[™] forend, which is conveniently located closer to the shooter for easier pump-action cycling. The reduced distance between trigger and the grip allows for better control and more comfortable trigger operation.



FOR SPECIFICATIONS, SEE PAGE 44

500[®]/510[®] SUPER BANTAM[™] Pump-Action Shotguns

MOSSBERG



NEW 500 Super Bantam - Turkey - Holosun[®] Micro Dot Combo
20GA | 12-13" LOP | #54684

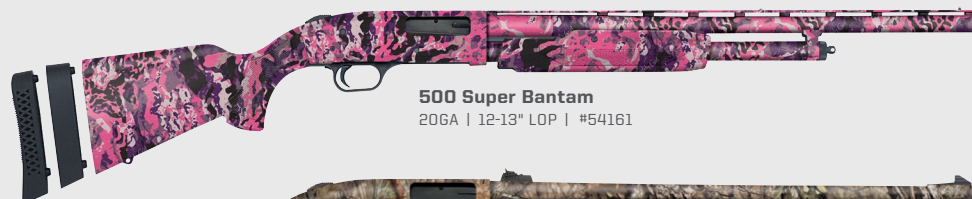
New Optic-Ready, Hunt-Ready Micro Dot Combo

Designed with patent-pending receiver cuts that accept low-profile direct mounting of Shield RMSc-pattern sights, this 500 Super Bantam comes outfitted with a Holosun[®] HS407K micro dot for straight out-of-the-box hunting convenience.

Holosun is a registered trademark of Holosun Technologies, Inc.



Developed with an innovative 1" stock spacer, our Super Bantams were designed to provide a proper length-of-pull for a variety of users. And, like Bantam pump-actions, Super Bantams have a smaller grip for easier trigger reach, EZ-Reach[™] foreends on select models for shorter reach while cycling the action, and shorter barrel lengths for better control and balance.



500 Super Bantam
20GA | 12-13" LOP | #54161



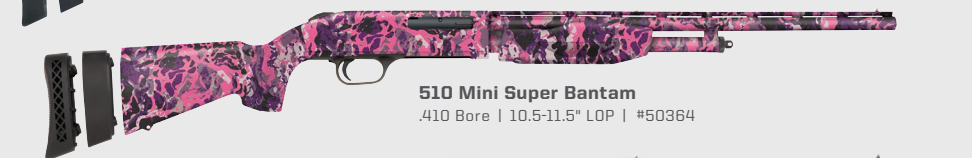
500 Super Bantam - Field/Deer Combo
20GA | 12-13" LOP | #54215



500 Super Bantam - All-Purpose
20GA | 12-13" LOP | #54210



500 Super Bantam - Waterfowl
20GA | 12-13" LOP | #54218

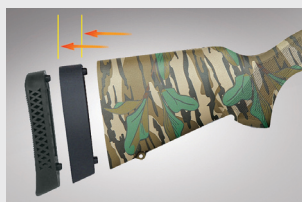


510 Mini Super Bantam
.410 Bore | 10.5-11.5" LOP | #50364



510 Mini Super Bantam
20GA | 10.5-11.5" LOP | #50497

500/510 Super Bantam stocks utilize a matching 1" spacer to extend the length-of-pull for better comfort and proper fit for a variety of users.



SUPER BANTAM FEATURES

- Standard pump features include dual extractors, steel-to-steel lockup, twin action bars, anti-jam elevator, and a top-mounted ambidextrous safety
- Multiple/popular camo finishes

500 SUPER BANTAM

- 20 Gauge, 6-Shot
- Multi-season 2-Barrel Combos
- Available Optic-Ready/Holosun Micro Dot Combo

510 MINI SUPER BANTAM

- 4-Shot (20GA) and 3-Shot (.410)
- 10.5-11.5" utilizing a 1" spacer

FOR SPECIFICATIONS, SEE PAGE 44

BANTAM/SUPER BANTAM™ Specifications

MOSSBERG

500 BANTAM | 3" Chamber, EZ-Reach Forend (12GA & 20GA), 13" LOP

TYPE	ITEM #	GA./BORE	2.75" CAP.	BARREL	SIGHTS	CHOKES	OVERALL LENGTH	LOP	METAL FINISH	STOCK & FINISH	APPROX. WEIGHT
All-Purpose	52132	12	5+1	24" VR	Dual Bead	Accu-Set	42.62"	13"	Blue	Wood	7.25 lbs
All-Purpose	54132	20	5+1	22" VR	Dual Bead	Accu-Set	40.75"	13"	Blue	Wood	6.5 lbs
All-Purpose	50112	.410	5+1	24" VR	Dual Bead	Fixed – Full	41.75"	13"	Blue	Synthetic (Black)	6 lbs

500 BANTAM COMBO | 3" Chamber, Multi-Season Two-Barrel Set, EZ-Reach Forend, 13" LOP

TYPE	ITEM #	GA./BORE	2.75" CAP.	BARREL	SIGHTS	CHOKES	OVERALL LENGTH	LOP	METAL FINISH	STOCK & FINISH	APPROX. WEIGHT
Field/Deer	54188	20	5+1	22" VR	Dual Bead	Accu-Set	40.75"	13"	Blue	Wood	6.5 lbs
Combo		20	5+1	24"	Adj. Rifle	Fully Rifled Bore	42.75"	13"	Blue	Wood	6.75 lbs

500 BANTAM FLEX - COMBO | 3" Chamber, EZ-Reach Forend, Reduced LOP & Variable LOP Stocks with FLEX Connector, Combo: Multi-Season Two Barrel Set

TYPE	ITEM #	GA./BORE	2.75" CAP.	BARREL	SIGHTS	CHOKES	OVERALL LENGTH	LOP	METAL FINISH	STOCK & FINISH	APPROX. WEIGHT
Bantam FLEX	54334	20	5+1	22" VR	Dual Bead	Accu-Set	34.5"	12.5"	Blue	FLEX Compact Synthetic (Black)	6.5 lbs
Bantam FLEX	54330	20	5+1	22" VR	Dual Bead	Accu-Set	34.75"	12.75"-14.625"	Blue	FLEX 4 Pos. Adjustable (Black)	6.5 lbs
Field/Deer Combo		20	5+1	24"	Adj. Rifle	Fully Rifled Bore	36.75"	12.75"-14.625"	Blue	FLEX 4 Pos. Adjustable (Black)	6.75 lbs

505 BANTAM | 3" Chamber, EZ-Reach Forend, 12" LOP

TYPE	ITEM #	GA./BORE	2.75" CAP.	BARREL	SIGHTS	CHOKES	OVERALL LENGTH	LOP	METAL FINISH	STOCK & FINISH	APPROX. WEIGHT
All-Purpose	57110	20	4+1	20" VR	Dual Bead	Accu-Set	37.5"	12"	Blue	Wood	5.25 lbs
All-Purpose	57120	.410	4+1	20" VR	Dual Bead	Fixed – Modified	37.5"	12"	Blue	Wood	5.25 lbs

500 SUPER BANTAM | 3" Chamber, EZ-Reach Forend, Variable LOP Synthetic Stock with 12" to 13" LOP

TYPE	ITEM #	GA./BORE	2.75" CAP.	BARREL	SIGHTS	CHOKES	OVERALL LENGTH	LOP	METAL FINISH	STOCK & FINISH	APPROX. WEIGHT
------	--------	----------	------------	--------	--------	--------	----------------	-----	--------------	----------------	----------------

500 SUPER BANTAM – ALL-PURPOSE

All-Purpose	54161	20	5+1	22" VR	Dual Bead	Accu-Set	39.75**	12"-13"	Muddy Girl Wild	Variable LOP Syn./Spacer (Wild)	5.25 lbs
All-Purpose	54210	20	5+1	22" VR	Dual Bead	Accu-Set	39.75**	12"-13"	Blue	Variable LOP Syn./Spacer (Black)	5.25 lbs

500 SUPER BANTAM – WATERFOWL

Waterfowl	54218	20	5+1	22" VR	Fiber Optic	Accu-Set	39.75**	12"-13"	MO Shadowgrass Blades	Variable LOP Syn./Spacer (Shad. Blades)	5.25 lbs
-----------	-------	----	-----	--------	-------------	----------	---------	---------	-----------------------	---	----------

500 SUPER BANTAM – TURKEY

Turkey	54157	20	5+1	22" VR	Fiber Optic	X-Full	39.75**	12"-13"	MO Obsession	Variable LOP Syn./Spacer (Obsession)	5.25 lbs
--------	-------	----	-----	--------	-------------	--------	---------	---------	--------------	--------------------------------------	----------

500 SUPER BANTAM – TURKEY - HOLOSUN® MICRO DOT COMBO | Holosun® HS407K, 1X, 6 MOA Dot Reticle, 12 Brightness Settings, 50K Hours Battery Life, Paralax-free Optic with Unlimited Eye Relief

NEW Turkey— Micro Dot Combo	54684	20	5+1	20" VR	Fiber Optic/ Micro Dot	X-Full	37.75**	12"-13"	MO Greenleaf	Variable LOP Syn./Spacer (Greenleaf)	5.25 lbs
---------------------------------------	-------	----	-----	--------	---------------------------	--------	---------	---------	--------------	--------------------------------------	----------

500 SUPER BANTAM COMBOS | 3" Chamber, Multi-Season Two-Barrel Set, EZ-Reach Forend, Variable LOP Synthetic Stock with 12" to 13" LOP

TYPE	ITEM #	GA./BORE	2.75" CAP.	BARREL	SIGHTS	CHOKES	OVERALL LENGTH	LOP	METAL FINISH	STOCK & FINISH	APPROX. WEIGHT
Field/Deer	54215	20	5+1	22" VR	Dual Bead	Accu-Set	39.75**	12"-13"	MO Break-Up Country	Variable LOP Syn./Spacer (BU Country)	5.25 lbs
Combo		20	5+1	24"	Adj. Rifle	Fully Rifled Bore	41.75**	12"-13"	MO Break-Up Country	Variable LOP Syn./Spacer (BU Country)	5.25 lbs
Field/Deer	54250	20	5+1	22" VR	Dual Bead	Accu-Set	39.75**	12"-13"	Blue	Variable LOP Syn./Spacer (Black)	5.25 lbs
Combo		20	5+1	24"	Adj. Rifle	Fully Rifled Bore	41.75**	12"-13"	Blue	Variable LOP Syn./Spacer (Black)	5.25 lbs

510 MINI SUPER BANTAM | 3" Chamber, Variable LOP Synthetic Stock with 10.5" to 11.5" LOP

TYPE	ITEM #	GA./BORE	2.75" CAP.	BARREL	SIGHTS	CHOKES	OVERALL LENGTH	LOP	METAL FINISH	STOCK & FINISH	APPROX. WEIGHT
All-Purpose	50499	20	3+1 (2.75")	18.5" VR	Dual Bead	Accu-Set	34.75**	10.5"-11.5"	Muddy Girl Wild	Variable LOP Syn./Spacer (Wild)	5 lbs
All-Purpose	50497	20	3+1 (2.75")	18.5" VR	Dual Bead	Accu-Set	34.75**	10.5"-11.5"	MO Break-Up Country	Variable LOP Syn./Spacer (BU Country)	5 lbs
All-Purpose	50485	20	3+1 (2.75")	18.5" VR	Dual Bead	Accu-Set	34.75**	10.5"-11.5"	Blue	Variable LOP Syn./Spacer (Black)	5 lbs
All-Purpose	50364	.410	2+1 (2.5")	18.5" VR	Dual Bead	Fixed – Modified	34.75**	10.5"-11.5"	Muddy Girl Wild	Variable LOP Syn./Spacer (Wild)	5 lbs
All-Purpose	50355	.410	2+1 (2.5")	18.5" VR	Dual Bead	Fixed – Modified	34.75**	10.5"-11.5"	MO Break-Up Country	Variable LOP Syn./Spacer (BU Country)	5 lbs
All-Purpose	50358	.410	2+1 (2.5")	18.5" VR	Dual Bead	Fixed – Modified	34.75**	10.5"-11.5"	Blue	Variable LOP Syn./Spacer (Black)	5 lbs

*Overall Length: Measured when stock is set at its minimum length of pull. **VR:** Vent rib. **LOP:** Length of pull. **Accu-Set:** Includes Full, Modified and Improved Cylinder choke tubes. **Variable LOP Syn./Spacer:** Variable length of pull between 12"-13" (500 Super Bantam) and 10.5"-11.5" (510 Mini Super Bantam) by use of included stock spacer. **MO:** Mossy Oak Brand Camo. Mossy Oak, Greenleaf, Break-Up, Shadowgrass Blades, and Obsession are trademarks of Haas Outdoors, Inc. **Muddy Girl:** Muddy Girl® is a registered trademark owned by Muddy Girl Holdings, LLC. **Holosun:** Holosun is a registered trademark of Holosun Technologies, Inc. All models include a free gun lock.

MAVERICK® 88® Pump-Action Shotguns



Maverick 88 - Field
12GA | Camo | #31012



Maverick 88 - Field
20GA | Camo | #32201



Maverick 88 - Bantam
20GA | Camo | #32203



Maverick 88 - Field
20GA | #32200



Maverick 88 - Slug
12GA | #31044



Maverick 88 - Security/Field Combo
12GA | #31014

Maverick: the utility player of pump-action shotguns. Affordable and reliable, these diverse models are equally at home combing through the woods or traversing upland fields.

MAVERICK 88 FIELD FEATURES

- 6-Shot
- 12 Gauge and 20 Gauge
- Standard pump-action features include dual extractors, steel-to-steel lockup, twin action bars, and anti-jam elevator
- Cross-bolt safety
- Compatible with certain 500 accessory stocks, barrels, and Accu-choke tubes (within gauge and capacity) for adaptability across various disciplines.



MAVERICK 88 FIELD | 3" Chamber

TYPE	ITEM #	GA.	2.75" CAP.	BARREL	SIGHTS	CHOKES	OVERALL LENGTH	LOP	METAL FINISH	STOCK/FOREND & FINISH	APPROX. WEIGHT
MAVERICK 88 - ALL-PURPOSE FIELD											
All-Purpose - Camo	31012	12	5+1	28" VR	Dual Bead	Modified Tube	47.75"	14.5"	Blue	Synthetic (Camo)	7 lbs
All-Purpose - Camo	32201	20	5+1	26" VR	Dual Bead	Modified Tube	45.25"	14"	Blue	Synthetic (Camo)	7 lbs
All-Purpose - Camo/Bantam	32203	20	5+1	22" VR	Dual Bead	Modified Tube	39.75"	12"	Blue	Synthetic (Camo)	5.25 lbs
All-Purpose	31010	12	5+1	28" VR	Dual Bead	Modified Tube	47.75"	14.5"	Blue	Synthetic (Black)	7 lbs
All-Purpose	32200	20	5+1	26" VR	Dual Bead	Modified Tube	45.25"	14"	Blue	Synthetic (Black)	7 lbs
All-Purpose - Bantam	32202	20	5+1	22" VR	Dual Bead	Modified Tube	39.75"	12"	Blue	Synthetic (Black)	5.25 lbs

MAVERICK 88 - SLUG

Slug	31017	12	5+1	24"	Adj. Rifle	Cylinder Bore	43.5"	14.5"	Blue	Synthetic (Black)	6.75 lbs
Slug	31044	12	5+1	24"	Adj. Rifle	Fully Rifled Bore	43.5"	14.5"	Blue	Synthetic (Black)	6.75 lbs

MAVERICK 88 COMBO | 3" Chamber, Multi-Discipline Two-Barrel Set

TYPE	ITEM #	GA.	2.75" CAP.	BARREL	SIGHTS	CHOKES	OVERALL LENGTH	LOP	METAL FINISH	STOCK & FINISH	APPROX. WEIGHT
Security/Field Combo	31014	12	5+1	18.5"	Bead	Cylinder Bore	39.5"	14.5"	Blue	Synthetic (Black)	6.25 lbs
		12	5+1	28" VR	Dual Bead	Modified Tube	47.75"	14.5"	Blue	Synthetic (Black)	7 lbs

VR: Vent rib. LOP: Length of pull. All models include a free gun lock.

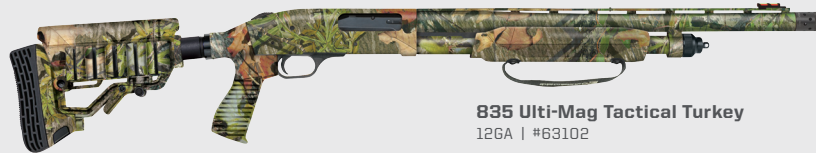
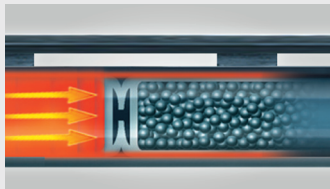
835[®] ULTI-MAG[®] Pump-Action Shotguns



NEW 835 Ulti-Mag - Turkey - Holosun[®] Micro Dot Combo
12GA | 20" | #62230
Also available- Shotgun Only
12GA | 24" | #62232

835 ULTI-MAG FEATURES

- 6-Shot
- Chambers a variety of 2.75", 3", and 3.5" shotshells
- 12 Gauge
- Clean-out magazine tubes
- Standard features include dual extractors, steel-to-steel lockup, top-mounted ambidextrous safety, twin action bars, and an anti-jam elevator for smooth operation
- 2-barrel Combo models for multiple season use
- Interchangeable chokes
- Mossberg signature overbored barrels offer 10 Gauge dimensions for the entire length of the barrel, providing less pellet deformation, resulting in tighter, more uniform patterns (smoothbore models)



835 Ulti-Mag Tactical Turkey
12GA | #63102



835 Ulti-Mag - Turkey/Field
12GA | #63527



835 Ulti-Mag - Waterfowl
12GA | #63521



835 Ulti-Mag Field/Deer Combo
12GA | #68224



835 Ulti-Mag - Turkey/Waterfowl Combo
12GA | #62437



835 Ulti-Mag - Turkey/Deer Combo
12GA | #62419



835 Ulti-Mag: Built for Hardcore Hunting.

Packing a powerful punch and a legacy of reliable performance in the field, the 835 has earned its place with hunters looking to make the leap to the 3.5" platform.

Optic-Ready Convenience. 835 innovations continue with two Turkey shotguns offered optic-ready— with patent-pending receiver cuts that accept low-profile direct mounting of Shield RMSc-pattern micro dot sights providing improved eye alignment and target acquisition. A new Combo is also offered— outfitted with a Holosun® HS407K micro dot for straight out-of-the-box hunting convenience.

Inset/Above Left: A cover plate is included for when an optic is not in use. Below: A Micro Dot Combo is available with a pre-mounted Holosun® HS407K.



835 ULTI-MAG 3.5" Chamber											
TYPE	ITEM #	GA.	2.75" CAP.	BARREL	SIGHTS	CHOKES	OVERALL LENGTH	LOP	FINISH	STOCK	APPROX. WEIGHT
835 ULTI-MAG TURKEY - HOLOSUN® MICRO DOT COMBO Holosun® HS407K, 1X, 6 MOA Dot Reticle, 12 Brightness Settings, 50K Hours Battery Life, Parallax-free Optic with Unlimited Eye Relief											
NEW Turkey/OR Combo	62230	12	5+1	20" VR OB	Fiber Optic	Ulti-Full Tube	40.75"	13.87"	MO Greenleaf	Synthetic (Greenleaf)	7.25 lbs
835 ULTI-MAG TURKEY - OPTIC-READY Optic-Ready Receiver w/Cover Plate, Overbored Barrel											
Turkey/Optic-Ready	62232	12	5+1	24" VR OB	Fiber Optic	Ulti-Full Tube	44.75"	13.87"	MO Greenleaf	Synthetic (Greenleaf)	7.5 lbs
835 ULTI-MAG TACTICAL TURKEY® Overbored Barrel, 6-Position Adjustable LOP Stock w/FLEX Pad, Shellholder											
Turkey	63102	12	5+1	20" VR OB	Fiber Optic	X-Factor Ptd Tky Tube	40.75**	10.75-14.25"	MO Obsession	6-Pos Adj. Stock w/FLEX Pad	7 lbs
835 ULTI-MAG TURKEY/FIELD Overbored Barrel, Accu-Mag Choke Set & X-Factor Ported Ulti-Full Turkey Tube											
Turkey/Field	63527	12	5+1	26" VR OB	Fiber Optic	Accu-Mag Set + X-Factor Ptd Tky Tube	46.75"	13.87"	MO Bottomland	Synthetic (Bottomland)	7.5 lbs
835 ULTI-MAG WATERFOWL Overbored Barrel											
Waterfowl	63521	12	5+1	28" VR OB	Fiber Optic	Accu-Mag Set	48.75"	13.87"	MO Shadowgrass Blades	Synthetic (Shadowgrass Blades)	7.75 lbs
835 ULTI-MAG COMBOS 3.5" Chamber, Multi-Season Two-Barrel Set											
TYPE	ITEM #	GA.	2.75" CAP.	BARREL	SIGHTS	CHOKES	OVERALL LENGTH	LOP	FINISH	STOCK	APPROX. WEIGHT
Turkey/Deer Combo	62419	12	5+1	24" VR OB	Fiber Optic	Ulti-Full Tube	44.75"	13.87"	MO Break-Up Country	Synthetic (Dual Comb)	7.5 lbs
		12	5+1	24"	ISB	Fully Rifled Bore	44.75"	13.87"	MO Break-Up Country		7.5 lbs
Turkey/Waterfowl Combo	62437	12	5+1	24" VR OB	Fiber Optic	Ulti-Full Tube	44.75"	13.87"	MO Break-Up Country	Synthetic	7.5 lbs
		12	5+1	28" VR OB	Fiber Optic	Accu-Mag Set	48.75"	13.87"	MO Break-Up Country		7.75 lbs
Field/Deer Combo	68224	12	5+1	28" VR OB	Dual Bead	Accu-Mag Set	48.75"	13.87"	Blue	Wood	7.75 lbs
		12	5+1	24"	Adj. Rifle	Fully Rifled Bore	44.75"	13.87"	Blue		7.5 lbs

*Overall Length: Measured at minimum length of pull. LOP: Length of pull. Accu-Mag Set: Includes Full, Modified and Improved Cylinder choke tubes. VR: Vent rib. 6-Pos: 6-position adjustable LOP stock with side-saddle shellholder and adjustable comb. Length of pull is adjusted using integrated lever. Stock uses FLEX recoil pad, compatible with other FLEX pads (sold separately). ISB: Integral scope base (cantilevered). MO: Mossy Oak brand camo. Mossy Oak, Greenleaf, Bottomland, Obsession, Break-Up and Shadowgrass Blades are trademarks of Haas Outdoors, Inc. Holosun: Holosun is a registered trademark of Holosun Technologies, Inc. All models include a free gun lock.

940[®] JM PRO

Autoloading Competition Shotguns



Designed in collaboration with World Champion shooter Jerry Miculek, the new 940 JM Pro is feature-rich, fast-cycling, ultra-competitive, and now—optic-ready. The 940 JM Pro ... A winner, right out of the box.



The Top Gun for 3-Gun – Now Comes Optic-Ready. Patent-pending receiver cuts and a removeable cover plate allow direct mounting of Shield RMSc-pattern micro dot sights, for improved eye alignment and faster target acquisition. Inside every 940 JM Pro, you will also find a new durable gas system, specially-coated or finished internal parts for smooth operation, and a competition-level loading port, elevator, and follower. Outside, a user-adjustable stock and streamlined forend sport Mossberg signature texturing, while a host of stylized, functional components combine for competition – optimizing speed, accuracy, and durability.



940 JM PRO FEATURES

- 10-Shot or 5-Shot
- 12 Gauge
- Optic-Ready Receiver with Cover Plate
- New, cleaner-running gas-vent system, longer cleaning intervals
- Quick-empty bolt release button, also allows for easy unloading
- Drilled and tapped receiver
- Ambidextrous top-mounted safety
- Adjustable Stock Drop System
- Briley[®] extended choke tube set
- HiViz[®] TriComp Fiber optic sights

Both accomplished World Champion shooters and multiple title holders, Jerry Miculek and daughter Lena Miculek step to the line with the 940 JM Pro.





NEW 940 JM Pro/Optic-Ready - Tungsten Gray
12GA | 10-Shot | #85165
Also available: 12GA | 5-Shot | #85144



NEW 940 JM Pro/Optic-Ready - MultiCam® Black
12GA | 10-Shot | #85166



Adjustable Length-of-Pull. Competition-ready stock is user-adjustable for LOP (1.25" range), and adjustable for drop at comb and cast using incremental stock shims. Aggressive Mossberg signature texturing adorns the grip and the slim, ergonomic forend.



Cleaner-Running Gas System. The redesigned 940 gas system allows faster, more reliable cycling at much greater cleaning intervals— up to 1500 rounds. And, it's durably built to hold up to the rigors of competition at the highest levels.



Built for Quad-Loading. An enlarged and beveled loading port was specifically configured for quad-loading; and the shotgun features an anodized bright orange follower, and an elongated, pinch-free elevator.



Bold & Functional. Receivers are anodized (tungsten gray or black) for superior durability. Oversized and contoured charging handle and bolt release button provide quick manipulation. Briley® extended chokes put pellets right where you want them, while the 940 JM Pro's optic-ready capability or Hiviz® TriComp front fiber optic sight gets you on target faster when the competition is fierce.

940 JM PRO/OPTIC-READY | 3" Chamber, Optic-Ready Receiver w/Cover Plate, Premium Coatings & Finishing, Durable Fast-Cycling Gas System, Beveled Loading Port, Logo-Engraved Receiver

TYPE	ITEM #	GAUGE	2.75" CAP.	BARREL	SIGHTS	CHOKES	OVERALL LENGTH	LOP	RECEIVER FINISH	BARREL FINISH	STOCK & FINISH	APPROX. WEIGHT
NEW 10-Shot /OR Competition	85165	12	9+1	24" VR	TriComp FO	Briley Ext. Set	44.75"	13"-14.25"	Tungsten Gray (Anodized)	Matte Blue	Adjustable LOP/Cast/Drop (Black)	7.75 lbs
NEW 5-Shot /OR Competition	85144	12	4+1	24" VR	TriComp FO	Briley Ext. Set	44.75"	13"-14.25"	Tungsten Gray (Anodized)	Matte Blue	Adjustable LOP/Cast/Drop (Black)	7.75 lbs
NEW 10-Shot /OR Competition	85166	12	9+1	24" VR	TriComp FO	Briley Ext. Set	44.75"	13"-14.25"	Black (Anodized)	Matte Blue	Adjustable LOP/Cast/Drop (Black MultiCam)	7.75 lbs

*Overall Length: Measured when stock is set at its minimum length of pull. VR: Vent rib. LOP: Length of pull. Briley Ext. Set: Includes Improved Cylinder, Cylinder, and Modified extended choke tubes. Chokes are fully compatible with other Mossberg Accu-Choke barrels. Briley is a trademark of Briley Manufacturing Company. MultiCam: MultiCam brand camo. MultiCam® is a registered trademark of Lineaweight LLC. TriComp: Hiviz TriComp fiber optic sight. Hiviz® is a registered trademark of Hiviz LLC. All models include a free gun lock.

940[®] PRO Autoloading Shotguns



NEW 940 Pro Turkey -
Holosun® Micro Dot Combo
12GA | 5-Shot | #85169
Also Available (Shotgun Only)
12GA | 5-Shot | #85158

940 Pro Turkey/Optic-Ready
12GA | 5-Shot | #85156

NEW 940 Pro Waterfowl/Optic-Ready
12GA | 5-Shot | #85164

NEW 940 Pro Waterfowl - Snow Goose/Optic-Ready
12GA | 13-Shot | #85167
NEW Also available:
12GA | 5-Shot | #85168

940 PRO TURKEY FEATURES

- 5-Shot, 12 Gauge
- Optic-ready, with patent-pending receiver cuts that allow direct mounting of RMSc-pattern micro dot sights, plus Holosun® Micro Dot Combo available
- X-Factor Extended Ported Turkey Choke Tubes

940 PRO WATERFOWL FEATURES

- 5-Shot or 13-Shot, 12 Gauge
- Optic-ready, with receiver cuts that allow direct mounting of RMSc-pattern micro dot sights
- Chrome-lined chambers/bores, and a stainless steel return spring for extra protection in harsh hunting conditions
- X-Factor Extended Ported Choke Tubes

Holosun is a registered trademark of Holosun Technologies, Inc.

940 PRO SERIES FEATURES

- Premium coatings and finishing on internal parts for corrosion-resistance and superior performance
- New, cleaner-running gas-vent system, longer cleaning intervals
- Stocks are adjustable for LOP/Drop at Comb/Cast, and Synthetic stocks are self-draining for wet weather
- HIVIZ® CompSight® fiber optic sights
- Beveled loading port, elongated pinch-free elevator
- Oversized and contoured charging handle and ergonomic bolt release provide easy manipulation
- Drilled and tapped receiver (except Sporting models)
- Ambidextrous top-mounted safety

HIVIZ and CompSight are registered trademarks of HIVIZ, LLC.

FOR SPECIFICATIONS, SEE PAGE 54



940 Pro Premium Coatings and Finishing Make the Difference.

Inside every 940 Pro autoloader, you will find a host of corrosion-resistant internal parts—including a boron-nitride coated gas piston, magazine tube, and hammer and sear—for improved performance in the blind, in the pit, or while traversing upland fields or a round of busting clays (see illustration, at right). For additional protection, our 940 Pro Waterfowl models feature a coated return spring tube, chrome-lined chambers and bores, and a stainless steel return spring to help when facing wet, unforgiving conditions. **For More 940 Pro Series Features, See Pages 52-53**



Optic-Ready, Hunt-Ready 940 Turkey & Waterfowl Shotguns

940 Pro Turkey and Waterfowl shotguns come optic-ready, with patent-pending receiver cuts that accept low-profile direct mounting of Shield RMSc-pattern micro dot sights for improved eye alignment and target acquisition. A cover plate is included for when optic is not in use. The new 940 Pro Turkey Holosun® Micro Dot Combo (shown below) comes conveniently paired with a hunt-ready Holosun® HS407K optic, right out-of-the-box.



FOR SPECIFICATIONS, SEE PAGE 54

940[®] PRO Autoloading Shotguns



NEW 940 Pro Sporting - Walnut
12GA | 5-Shot | #85147



NEW 940 Pro Super Bantam™ Sporting
12GA | 5-Shot | #85159



940 Pro Field - Walnut
12GA | 5-Shot | #85154



940 Pro Field
12GA | 5-Shot | #85155



Smooth operating, and chock full of features, there's a 940 Pro model built to satisfy a variety of wingshooting seasons or competitive shooting.

FOR SPECIFICATIONS, SEE PAGE 54



940 Pro Series – Premium Features



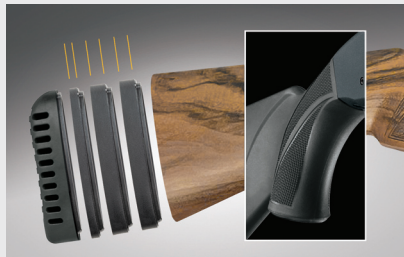
Cleaner-Running Gas System. The redesigned 940 gas system allows faster, more reliable cycling at much greater cleaning intervals— up to 1500 rounds. It's durably built to hold up season-after-season, year-after-year.



Bold & Functional Details. An oversized and contoured charging handle and an ergonomic bolt release both provide quick manipulation in the field.



Built for Hardcore Hunting. 940 models have an enlarged and beveled loading port designed for ease of loading, an anodized bright orange follower, and an elongated, pinch-free elevator.



Adjustable 940 Stocks. User-adjustable for LOP (1.25" range), and drop at comb and cast using incremental stock shims. Mossberg signature texturing adorns the grip and the slim, ergonomic forend. Waterfowl and Turkey stocks are self-draining to combat the elements.



A Hunting & Sporting Lineup with Sighting and Choke Choices. In addition to select models offering optic-ready capability— the 940 Pro lineup features fiber optic sights and a variety of ported, extended or interchangeable Accu-Choke tubes on select models.



Cerakote Protection for Hardcore Waterfowling. 940 Pro Waterfowl and Snow Goose models feature a Cerakote® polymer-ceramic coating on their receivers and barrels for superior abrasion and wear resistance, and added anti-corrosion protection under tough conditions. Cerakote is registered trademark of NIC Industries, Inc.

940 PRO SERIES FEATURES

- Premium coatings and finishing on internal parts for corrosion-resistance and superior performance
- New, cleaner-running gas-vent system, longer cleaning intervals
- Stocks are adjustable for LOP/Drop at Comb/Cast, and are Self-draining for wet weather (synthetic stocks only)
- Beveled loading port, elongated pinch-free elevator
- HIVIZ® CompSight® fiber optic sights
- Oversized and contoured charging handle and ergonomic bolt release provide easy manipulation
- Drilled and tapped receiver (except Sporting models)
- Ambidextrous top-mounted safety

940 PRO SPORTING FEATURES

- 5-Shot, 12 Gauge
- Choice of Cream-finish Walnut or Reduced LOP Black synthetic stocks
- Briley® Extended Choke Tube Set (3)

940 PRO FIELD FEATURES

- 5-Shot, 12 Gauge
- Choice of Dark Walnut or Black synthetic stocks

HIVIZ and CompSight are registered trademarks of HIVIZ, LLC.
Briley is a trademark of Briley Manufacturing Company.



940[®] PRO Autoloading Shotguns



940 PRO | 3" Chamber, Premium Coatings and Finishing, Durable Fast-Cycling Gas System, Beveled Loading Port, Logo Engraved Receiver

TYPE	ITEM #	GAUGE	2.75" CAP.	BARREL	SIGHTS	CHOKES	OVERALL LENGTH	LOP	RECEIVER & BARREL FINISH	STOCK & FINISH	APPROX. WEIGHT
940 PRO SPORTING											
NEW 5-Shot	85147	12	4+1	30" VR	HIVIZ CompSight FO	Briley Ext. Set	50.5"	13"-14.25"	Blued	Adj. LOP/Cast/Drop (Walnut/Cream)	8.5 lbs
NEW 5-Shot	85159	12	4+1	26" VR	HIVIZ CompSight FO	Briley Ext. Set	46.25"	12.5"-14.25"	Blued	Adj. LOP/Cast/Drop (Black Synthetic)	7.25 lbs
940 PRO FIELD											
5-Shot	85154	12	4+1	28" VR	HIVIZ CompSight FO	Accu-Set	47.5"	13"-14.25"	Matte Blue	Adj. LOP/Cast/Drop (Dark Walnut)	8 lbs
5-Shot	85155	12	4+1	28" VR	HIVIZ CompSight FO	Accu-Set	47.5"	13"-14.25"	Matte Blue	Adj. LOP/Cast/Drop (Black Synthetic)	7.75 lbs

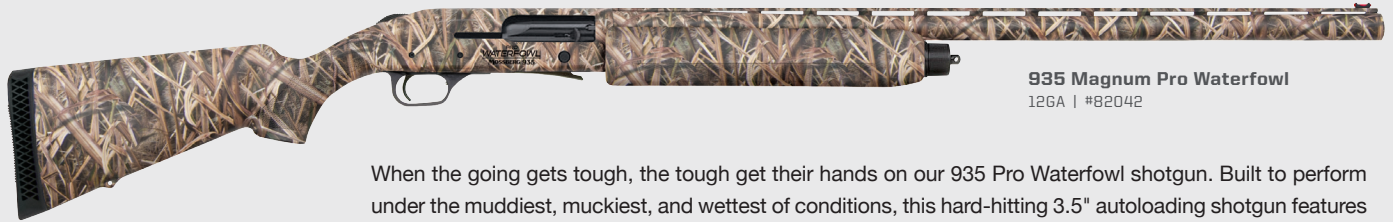
940 PRO - OPTIC-READY | 3" Chamber, Optic-Ready Receiver w/Cover Plate, Premium Coatings and Finishing, Durable Fast-Cycling Gas System, Beveled Loading Port, Logo Engraved Receiver

TYPE	ITEM #	GAUGE	2.75" CAP.	BARREL	SIGHTS	CHOKES	OVERALL LENGTH	LOP	RECEIVER & BARREL FINISH	STOCK & FINISH	APPROX. WEIGHT
940 PRO TURKEY - HOLOSUN[®] MICRO DOT COMBO Holosun [®] HS407K, 1X, 6 MOA Dot Reticle, 12 Brightness Settings, 50K Hours Battery Life, Parallax-free Optic with Unlimited Eye Relief											
NEW 5-Shot Micro Dot Combo	85169	12	4+1	18.5" VR	HIVIZ CompSight FO & Micro Dot	X-Factor Ext. Tube	39.25"	13"-14.25"	MO Green Leaf	Adj. LOP/Cast/Drop (MO Greenleaf)	7.25 lbs
940 PRO TURKEY Optic-Ready Receiver with Cover Plate											
5-Shot	85158	12	4+1	18.5" VR	HIVIZ CompSight FO	X-Factor Ext. Tube	39.25"	13"-14.25"	MO Green Leaf	Adj. LOP/Cast/Drop (MO Greenleaf)	7.25 lbs
5-Shot	85156	12	4+1	24" VR	HIVIZ CompSight FO	X-Factor Ext. Tube	44.75"	13"-14.25"	MO Green Leaf	Adj. LOP/Cast/Drop (MO Greenleaf)	7.5 lbs
940 PRO WATERFOWL Optic-Ready Receiver with Cover Plate											
NEW 5-Shot	85164	12	4+1	28" VR	HIVIZ CompSight FO	X-Factor Ext. Tube	48.75"	13"-14.25"	Cerakote (Patriot Brown)	Adj. LOP/Cast/Drop (MO Vintage Shadowgrass)	7.75 lbs
940 PRO WATERFOWL - SNOW GOOSE Optic-Ready Receiver with Cover Plate											
NEW 13-Shot	85167	12	12+1	28" VR	HIVIZ CompSight FO	X-Factor Ext. Tube	50.75"	13"-14.25"	Cerakote (Battleship Gray)	Adj. LOP/Cast/Drop (True Timber Viper Snow)	8.25 lbs
NEW 5-Shot	85168	12	4+1	28" VR	HIVIZ CompSight FO	X-Factor Ext. Tube	48.75"	13"-14.25"	Cerakote (Battleship Gray)	Adj. LOP/Cast/Drop (True Timber Viper Snow)	7.75 lbs

*Overall Length: Measured when stock is set at its minimum length of pull. VR: Vent rib. LOP: Length of pull. X-Factor: Ported, extended choke tube (Accu-Choke compatible). Accu-Set: Includes Full, Modified, and Improved Cylinder choke tubes (Accu-Choke compatible). MO: Mossy Oak Brand Camo. Mossy Oak, Shadowgrass, and Greenleaf are trademarks of Haas Outdoors, Inc. True Timber: True Timber brand camo. True Timber[®] and Viper are trademarks of True Timber Outdoors Holding Company, LLC. Cerakote: Polymer ceramic coating. Cerakote[®] is a registered trademark of NIC Industries, Inc. HIVIZ CompSight: HIVIZ CompSight front fiber optic sight. HIVIZ[®] and CompSight[®] are registered trademarks of HIVIZ LLC. Holosun[®] is a registered trademark of Holosun Technologies, Inc. Briley[®] is a trademark of Briley Manufacturing Company. All models include a free gun lock.

935™ PRO WATERFOWL Autoloading Shotgun

MOSSBERG



935 Magnum Pro Waterfowl
12GA | #82042

When the going gets tough, the tough get their hands on our 935 Pro Waterfowl shotgun. Built to perform under the muddiest, muckiest, and wettest of conditions, this hard-hitting 3.5" autoloading shotgun features coatings and finishes that stand up to the elements.



935 PRO WATERFOWL FEATURES

- Chambers 2.75", 3" and 3.5" shotshells
- 5-Shot
- 12 Gauge
- Stainless steel return spring
- Beveled loading gate
- Interchangeable choke tubes
- Stock drop shims for a custom fit
- Standard features include dual gas-vent system, quick-empty bolt release button for easy unloading, and drilled and tapped receiver
- Overbored barrel



Premium Finishes for Reliability and Increased Performance

- Boron-nitride-coated gas piston, piston rings, magazine tube, hammer, sear, return spring plunger, and return spring tube prevent corrosion and facilitate cleaning (in blue).
- The shell stop, bolt slide, and elevator receive additional finishing to reduce friction for faster follow-up shots (in yellow).
- The stainless-steel return spring ensures reliable, corrosion-resistant operation of the recoil system.

935 PRO WATERFOWL | 3.5" Chamber, Premium Coatings and Finishing, Engraved Receiver

TYPE	ITEM #	GA.	CHAMBER	2.75" CAPACITY	BARREL	SIGHTS	CHOKES	OVERALL LENGTH	LOP	FINISH	STOCK	APPROX. WEIGHT
Waterfowl	82042	12	3.5"	4+1	28" VR OB	Fiber Optic	Accu-Mag Set	49"	14"	MO Shadowgrass Blades	Synthetic	7.75 lbs

Premium Coatings and Finishing: Includes boron-nitride-coated gas piston, piston rings, magazine tube, hammer, sear, return spring plunger, and return spring tube; shell stop, bolt slide, and elevator receive additional finishing to reduce friction; stainless steel return spring. **VR:** Vent rib. **OB:** Overbored barrel. **LOP:** Length of pull. **Accu-Mag:** Set includes Full, Modified and Improved Cylinder choke tubes. **Engraved:** Receiver is engraved with logo. **MO:** Mossy Oak Brand Camo. Mossy Oak and Shadowgrass Blades are registered trademarks of Haas Outdoors, Inc. All models include a free gun lock.

935™ MAGNUM

Autoloading Shotguns



935 Magnum - Turkey/Pistol Grip
12GA | 22" | #82540



935 Magnum - Turkey
12GA | 22" | #81046



935 Magnum - Waterfowl
12GA | 28" | #81023



935 Magnum - Waterfowl
12GA | 28" | #81000

935 MAGNUM FEATURES

- Chambers 2.75", 3", and 3.5" shotshells
- 12 Gauge
- Dual gas-vent system
- Quick-empty bolt release for easy unloading
- Drilled and tapped receiver
- Ambidextrous top-mounted safety
- Overbored barrels offer 10-gauge dimensions for the entire length of the barrel, providing less pellet deformation, resulting in tighter, more uniform patterns
- Interchangeable chokes
- Fiber optic sights

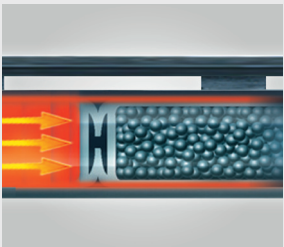




Sometimes you need the extra punch of a magnum — and that's where our powerful 935 autoloader comes into the picture. This 3.5" chambered beast offers smooth-as-silk shooting thanks to its dual gas-vent system. And for game requiring the most powerful magnum loads, the 935 delivers unequalled performance from the turkey or waterfowl blind.



Standard 935 synthetic stocks feature a Stock Drop System that adjusts the vertical angle of the stock for improved sightlines and a custom-type fit.



935 models are overbored to 10 Gauge dimensions, which reduces pellet deformation for exceptionally uniform dense patterns.



For maximum hunting flexibility, 935 Magnum autoloading shotguns handle heavy-hitting 2.75" loads as well as 3" and 3.5" shotshells.



For optimal target acquisition in wet weather or low-light hunting conditions, all 935 models come equipped with fiber optic sights.

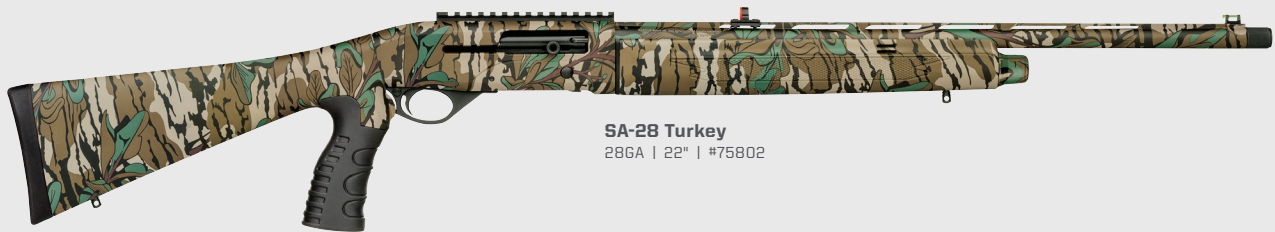
935 MAGNUM 3.5" Chamber											
TYPE	ITEM #	GA.	2.75" CAP.	BARREL	SIGHTS	CHOKES	OVERALL LENGTH	LOP	FINISH	STOCK	APPROX. WEIGHT
935 MAGNUM – TURKEY											
Turkey	81046	12	4+1	22" VR OB	Fiber Optic	X-Factor Ported Turkey Tube	43"	14"	MO Bottomland	Synthetic (Bottomland)	7.5 lbs
Turkey – Pistol Grip	82540	12	4+1	22" VR OB	Fiber Optic	X-Factor Ported Turkey Tube	42.75"	13.75"	MO Obsession	Full-Length Synthetic/Pistol Grip (Obsession)	7.5 lbs
935 MAGNUM – WATERFOWL											
Waterfowl	81000	12	4+1	28" VR OB	Fiber Optic	Accu-Mag Set	49"	14"	Matte Blue	Synthetic (Black)	7.75 lbs
Waterfowl	81023	12	4+1	28" VR OB	Fiber Optic	Accu-Mag Set	49"	14"	MO Shadowgrass Blades	Synthetic (Shadowgrass Blades)	7.75 lbs

LOP: Length of pull. Accu-Mag Set: Includes Full, Modified and Improved Cylinder choke tubes. VR: Vent rib. OB: Overbored barrel. Pistol Grip: Full-length stock with pistol grip. MO: Mossy Oak Brand Camo. Mossy Oak, Bottomland, Obsession, and Shadowgrass Blades are registered trademarks of Haas Outdoors, Inc. All models include a free gun lock.

SA SERIES Autoloading Shotguns



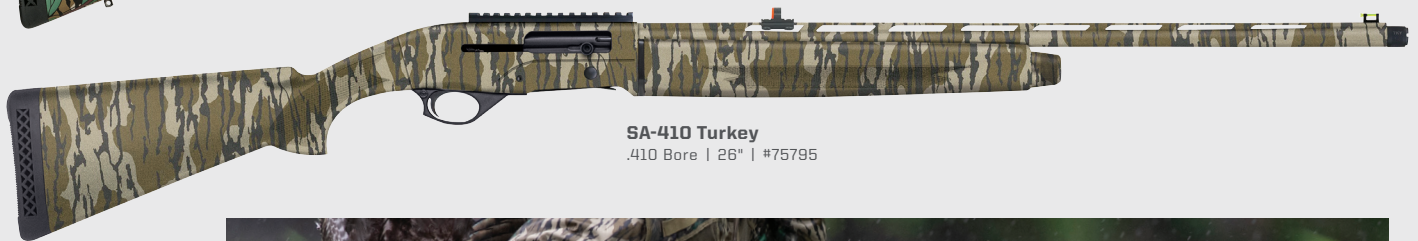
SA-20 Turkey
20GA | 22" | #75799



SA-28 Turkey
28GA | 22" | #75802



SA-20 Turkey
20GA | 22" | #75801



SA-410 Turkey
.410 Bore | 26" | #75795



The full-length stock with contoured pistol grip (available in 20GA & 28GA) offers a compact 12.75" LOP and a comfortable, steady grip.

FOR SPECIFICATIONS, SEE PAGE 61



SA Turkey model's fiber-optic ghost ring sights provide excellent target acquisition in foul weather or low-light conditions.



SA Turkey shotguns all feature a raised front fiber optic sight component and an extended choke tube with tight turkey constriction.



SA Turkey and Railed shotguns come with a receiver mounted rail for quick and easy mounting of sights or optics. The Railed model comes with an adjustable rear ghost ring sight (see insets below)

Whether you're a first-time hunter or an accomplished target shooter, you can't go wrong with Mossberg International sub-gauge autoloaders. Lightweight, quick-swinging, and with light recoil, these versatile smaller-gauge shotguns provide maneuverability when hunting nimble upland and woodland game, hitting targets at the range, or busting clays.

SA SERIES TURKEY FEATURES

- 5-Shot — 20 Gauge, 28 Gauge, and .410 Bore Models
- Smooth-cycling Gas-operated System
- Extended Turkey Choke Tube
- Top Picatinny Rail
- Fiber-Optic Ghost Ring sights
- Mossy Oak® Greenleaf® or Original Bottomland® camo

SA-20 RAILED FEATURES

- 5-Shot — 20 Gauge
- Smooth-cycling Gas-operated System
- Magazine Tube Cap with Tri-rail
- Top Picatinny Rail with Adjustable Rear Ghost Ring/Winged Front Fiber Optic Sight
- Cylinder Bore



SA-20 Railed
20GA | 20" | #75780



Features unique to the pistol-gripped SA-20 Railed include: a top-rail with mounted rear ghost ring sight with a winged front fiber optic, and a magazine tube cap with tri-rail.



SA SERIES Autoloading Shotguns



SA-28 All-Purpose Field - Walnut

28GA | 26" | Walnut | #75792

Also available:

SA-20 | 20GA | 26" | #75789



SA-28 All-Purpose Field

28GA | 26" | #75803

Also available:

SA-20 | 20GA | 28" | #75771

SA-20 | 20GA | 26" | #75772

SA-410 | .410 Bore | 26" | #75796



SA-20 All-Purpose Field - Bantam/Walnut

20GA | 12.5" LOP | 24" | Walnut | #75793



SA-28 All-Purpose Field - Bantam

28GA | 12.5" LOP | 24" | #75769

Also available:

SA-20 | 20GA | 12.5" LOP | 24" | #75770



Versatile and well-balanced, SA shotguns are available in three gauges and excel in a variety of shooting disciplines.

SA-20 and SA-28 Bantam shotguns are also available, equipped with shorter barrels and compact lengths of pull, providing excellent control and a comfortable fit.



Handsome details like grip and forend checkering make the SA Walnut models as good looking as they are functional and easy to operate.



Every SA All-Purpose Field shotgun comes with a five choke tube Sport Set in a durable blued finish.

SA Series All-Purpose Field semi-automatics— including our reduced-LOP Bantam models— are perfectly suited for wingshooting, competition, and recreational shooting.

SA SERIES ALL-PURPOSE FIELD FEATURES

- 5-Shot — 20 Gauge, 28 Gauge, and .410 Bore Models
- Smooth-cycling Gas-operated System
- Interchangeable Sport Set (5) Choke Tubes
- Bead Sights
- Walnut or Black Synthetic Stocks/Forends
- Bantam Models: 12.5" Reduced LOP, 24" Compact Field Barrels, Comfortable handling and fit

MOSSBERG INTERNATIONAL SA-20

TYPE	ITEM #	GAUGE	CHAMBER	2.75" CAP.	BARREL	SIGHTS	CHOKES	OVERALL LENGTH	LOP	METAL FINISH	STOCK/FINISH	APPROX. WEIGHT
SA-20 ALL PURPOSE FIELD												
All-Purpose – Walnut	75789	20	3"	4+1	26" VR	Front Bead	Sport Set	46.5"	14.5"	Blue (High Polish)	Walnut (High Gloss)	6.5 lbs
All-Purpose	75771	20	3"	4+1	28" VR	Front Bead	Sport Set	48.25"	14.25"	Matte Blue	Synthetic (Black)	6 lbs
All-Purpose	75772	20	3"	4+1	26" VR	Front Bead	Sport Set	46.25"	14.25"	Matte Blue	Synthetic (Black)	5.75 lbs
All-Purpose – Bantam/Walnut	75793	20	3"	4+1	24" VR	Front Bead	Sport Set	42.5"	12.5"	Blue (High Polish)	Walnut (High Gloss)	6.25 lbs
All-Purpose – Bantam	75770	20	3"	4+1	24" VR	Front Bead	Sport Set	42.5"	12.5"	Matte Blue	Synthetic (Black)	5.5 lbs
SA-20 TURKEY Top Rail, Extended Turkey Choke												
Turkey – Pistol Grip	75799	20	3"	4+1	22" VR	FO Ghost Ring	Ext. Turkey Choke	41.75"	12.75"	MO Greenleaf	Synthetic (MO Greenleaf)	6 lbs
Turkey	75801	20	3"	4+1	22" VR	FO Ghost Ring	Ext. Turkey Choke	43.25"	14.25"	Matte Blue	Synthetic (MO Greenleaf)	5.5 lbs
SA-20 RAILED Magazine Tube Cap with Tri-Rail, Top Rail												
All-Purpose – Pistol Grip	75780	20	3"	4+1	20"	Ghost Ring/FO Front	Cylinder Bore	38.75"	12.75"	Matte Blue	Synthetic/Pistol Grip (Black)	5.75 lbs

MOSSBERG INTERNATIONAL SA-28

TYPE	ITEM #	GAUGE	CHAMBER	2.75" CAP.	BARREL	SIGHTS	CHOKES	OVERALL LENGTH	LOP	METAL FINISH	STOCK/FINISH	APPROX. WEIGHT
SA-28 ALL-PURPOSE FIELD												
All-Purpose – Walnut	75792	28	3"	4+1	26" VR	Front Bead	Sport Set	46.5"	14.5"	Blue (High Polish)	Walnut (High Gloss)	6.5 lbs
All-Purpose	75803	28	3"	4+1	26" VR	Front Bead	Sport Set	46.5"	14.5"	Matte Blue	Synthetic (Black)	5.5 lbs
All-Purpose – Bantam	75769	28	3"	4+1	24" VR	Front Bead	Sport Set	42.5"	12.5"	Matte Blue	Synthetic (Black)	5.5 lbs
SA-28 TURKEY Top Rail, Extended Turkey Choke												
Turkey – Pistol Grip	75802	28	3"	4+1	22" VR	FO Ghost Ring	Ext. Turkey Choke	41.75"	12.75"	MO Greenleaf	Synthetic (MO Greenleaf)	6 lbs

MOSSBERG INTERNATIONAL SA-410

TYPE	ITEM #	BORE	CHAMBER	2.75" CAP.	BARREL	SIGHTS	CHOKES	OVERALL LENGTH	LOP	METAL FINISH	STOCK/FINISH	APPROX. WEIGHT
SA-410 ALL-PURPOSE FIELD												
All-Purpose	75796	.410	3"	4+1	26" VR	Front Bead	Sport Set	45.75"	13.75"	Matte Blue	Synthetic (Black)	6.5 lbs
SA-410 TURKEY Top Rail, Extended Turkey Choke												
Turkey	75795	.410	3"	4+1	26" VR	FO Ghost Ring	Ext. Turkey Choke	46.75"	13.75"	MO Orig. Bottomland	Synthetic (MO Original Bottomland)	6.5 lbs

LOP: Length of pull. **Sport Set:** Includes Full, Improved Modified, Modified, Improved Cylinder and Cylinder choke tubes. **VR:** Vent rib. **Pistol Grip:** Full-length stock with pistol grip. **MO:** Mossy Oak Brand Camo. Mossy Oak, Bottomland, and Greenleaf are trademarks of Haas Outdoors, Inc. All models include a free gun lock.

GOLD RESERVE™

Over-and-Under Shotguns



NEW Gold Reserve
20GA | #75482



Gold Reserve - Black Label
12GA | #75473



Gold Reserve
410 Bore | #75480



Gold Reserve - Super Sport
12GA | #75474



Gold Reserve Super Sport models have a Grade-A black walnut stock that is adjustable for length-of-pull (2 inches), cast, and comb height—for the ultimate in shooting comfort.





Beautifully styled and appointed with top-shelf materials and finishing, our new Gold Reserve shotguns will impress from upland fields to wetland marshes, or while dominating at 5-Stand. The lineup features details traditionally associated with high-end break-actions.

GOLD RESERVE FEATURES

- Grade-A Black Walnut Stocks
- Shell Ejectors
- 12GA, 20GA, and .410 Models
- Scroll-Engraved Polished Receivers with Gold Inlay
- 5-Choke Extended Sport Set
- Corrosion-resistant Chrome-lined Bores and Chambers, Jeweled Actions
- Tang-mounted Safety/Barrel Selector
- Dual Locking Lugs



Gold Reserve shotguns feature convenient shell ejectors and a polished silver or blue finish. Decorative accents include jewelry on the action and rich scroll engraving on the receiver, safety/barrel selector, and on the action release. Gold Reserve stocks all feature Grade-A black walnut. Right: Every Gold Reserve sports a distinctive 24kt gold inlay on the underside of the receiver.

Gold Reserve models come with a 5-choke Sport Set of extended and checkered tubes and feature polished blue barrels. The Super Sport model (above) features a fiber optic sight and high-profile 12mm tall x 10mm wide rib.

MOSSBERG INTERNATIONAL GOLD RESERVE | Shell Ejectors, Scroll-Engraved Receivers/Gold Inlay, Jeweled Action, Chrome-Lined Bores and Chambers, Dual Locking Lugs

TYPE	ITEM #	GAUGE/ BORE	CHAMBER	BARREL	SIGHTS	OVERALL CHOKES	LENGTH	LOP	BARREL FINISH	ACTION/RECEIVER FINISH & ENGRAVING	STOCK & FINISH	DAH	DAC	APPROX. WEIGHT
GOLD RESERVE Scroll-Engraved Receiver/Gold Inlay, 10mm Wide Vent Rib														
Sporting	75472	12	3"	30" VR	Bead	Ext. Sport Set (5 Total)	47"	14"	Polished Blue	Polished Silver w/Scroll & Inlay	Grade A - Satin/Black Walnut	2.25"	1.75"	7.5 lbs
NEW Sporting	75482	20	3"	30" VR	Bead	Ext. Sport Set (5 Total)	47"	14"	Polished Blue	Polished Silver w/Scroll & Inlay	Grade A - Satin/Black Walnut	2.25"	1.75"	7 lbs
Sporting	75480	.410	3"	26" VR	Bead	Ext. Sport Set (5 Total)	43"	14"	Polished Blue	Polished Silver w/Scroll & Inlay	Grade A - Satin/Black Walnut	2.25"	1.75"	5.75 lbs
GOLD RESERVE - BLACK LABEL Scroll-Engraved Receiver/Gold Inlay, 10mm Wide Vent Rib														
Sporting	75473	12	3"	30" VR	Bead	Ext. Sport Set (5 Total)	47"	14"	Polished Blue	Polished Black w/Scroll & Inlay	Grade A - Satin/Black Walnut	2.25"	1.75"	7.5 lbs
Sporting	75481	20	3"	30" VR	Bead	Ext. Sport Set (5 Total)	47"	14"	Polished Blue	Polished Black w/Scroll & Inlay	Grade A - Satin/Black Walnut	2.25"	1.75"	7 lbs
GOLD RESERVE - SUPER SPORT Scroll-Engraved Receiver/Gold Inlay, Extra-Wide 12mm/High-Profile 10mm Vent Rib														
Sporting	75474	12	3"	30" HVR	Fiber Optic	Ext. Sport Set (5 Total)	46-48"	13-15"	Polished Blue	Polished Silver w/Scroll & Inlay	Adjustable (LOP, Cast, Comb) Grade A - Satin/Black Walnut	2.25"	1.75"	7.5 lbs

Shell Ejectors: Ejects fired shells from the chamber when action is opened. **Ext. Sport Set:** Extended and checkered tube set includes Skeet, Improved Cylinder, Modified, Improved Modified and Full chokes (Silver finish). **Inlay:** Receiver underside has 24kt gold decorative inlay. **VR:** 10mm wide vent rib. **HVR:** High-profile vent rib — 10mm High/12mm Wide. **LOP:** Length of pull. **DAC:** Stock drop at comb. **DAH:** Stock drop at heel. All models include a free gun lock.

SILVER RESERVE™

Over-and-Under Shotguns



Silver Reserve
20GA | #75475



Silver Reserve
12GA | #75471



Silver Reserve - Bantam
20GA | 13.25" LOP | #75477



Silver Reserve
28GA | #75478



Silver Reserve
.410 Bore | #75479





Whether out for a day of wingshooting or busting clays, you can't go wrong with one of these sure-to-be popular Silver Reserve over-and-unders. Durable, reliable, and affordable, these well-appointed break-action shotguns are loaded with details traditionally reserved for high-priced double guns.



SILVER RESERVE FEATURES

- Black Walnut or Synthetic Stocks
- Shell Extractors
- 12GA, 20GA, 28GA, and .410 Models
- Logo-Engraved Receivers
- 5-Choke Field Set
- Corrosion-resistant chrome-lined barrels and chambers
- Tang-mounted Safety/Barrel Selector
- Dual locking lugs



Silver Reserve shotguns feature shell extractors, a tang-mounted safety with barrel selector and a Mossberg logo-engraved receiver available in both Satin Silver (paired with Walnut stock) or Matte Blue finish (paired with Black Synthetic stock).



Select black walnut stocks feature handsome cut checkering on the grip and forend. Available in 12GA, 20GA, 28GA and .410. A Bantam model in 20GA is also offered, with a reduced-LOP (13.25") stock.

MOSSBERG INTERNATIONAL SILVER RESERVE | Shell Extractors, Logo-Engraved Receiver, Chrome Plated Bores and Chambers, Dual Locking Lugs

TYPE	ITEM #	GAUGE/ BORE	CHAMBER	BARREL	SIGHTS	CHOKES	OVERALL LENGTH	LOP	BARREL FINISH	ACTION/RECEIVER FINISH & ENGRAVING	STOCK & FINISH	DAH	DAC	APPROX. WEIGHT
SILVER RESERVE Black Walnut Stock, Logo-Engraved Receiver														
Field	75471	12	3"	28" VR	Bead	Field Set (5 Total)	45"	14"	Matte Blue	Satin Silver w/Logo	Satin/Black Walnut	2.25"	1.75"	7 lbs
Field	75475	20	3"	26" VR	Bead	Field Set (5 Total)	43"	14"	Matte Blue	Satin Silver w/Logo	Satin/Black Walnut	2.25"	1.75"	6.25 lbs
Field	75478	28	3"	26" VR	Bead	Field Set (5 Total)	43"	14"	Matte Blue	Satin Silver w/Logo	Satin/Black Walnut	2.25"	1.75"	6.5 lbs
Field	75479	.410	3"	26" VR	Bead	Field Set (5 Total)	43"	14"	Matte Blue	Satin Silver w/Logo	Satin/Black Walnut	2.25"	1.75"	5.75 lbs
SILVER RESERVE - BANTAM Black Walnut Stock, 13.25" Length of Pull, Logo-Engraved Receiver														
Bantam/Field	75477	20	3"	26" VR	Bead	Field Set (5 Total)	42.25"	13.25"	Matte Blue	Satin Silver w/Logo	Satin/Black Walnut	2.25"	1.75"	6 lbs

Shell Extractors: Lifts shells from the chamber for easy removal when action is opened. **Field Set:** Includes Cylinder, Improved Cylinder, Modified, Improved Modified and Full chokes (flush, blued finish). **VR:** Vent rib. **LOP:** Length of pull. **DAC:** Stock drop at comb. **DAH:** Stock drop at heel. All models include a free gun lock.

SILVER RESERVE™ - EVENTIDE Over-and-Under Shotguns



NEW Silver Reserve - Eventide - Turkey

12GA | #75485 | 20"

Also available:

20GA | #75486 | 20"

28GA | #75487 | 20"



NEW Silver Reserve - Eventide - Waterfowl

12GA | #75488 | 28"



NEW Silver Reserve - Eventide - All-Purpose

20GA | #75483 | 26"

Also available:

12GA | #75470 | 28"



NEW Silver Reserve - Eventide HS12

12GA | #75484 | 18.5"



Eventide HS12 models come with a pair of picatinny-style accessory rails— on top the receiver (at left), and under-barrel (below)— for easy accessory mounting.





Our shotguns are renowned for their hunting prowess— and these Silver Reserve Eventide All-Purpose, Turkey and Waterfowl over-and-unders are sure to uphold that tradition. Reliable and affordable, these durable break-actions are loaded with features traditionally found on higher-priced double-guns. And, with three gauges and barrel lengths ranging from a compact 18.5 inches out to 28 inches to choose from, there's an Eventide shotgun ready-built for a multitude of seasons and applications.



SILVER RESERVE - EVENTIDE FEATURES

- Synthetic Stocks in a Variety of Finishes
- Select All-Purpose, Turkey, and Waterfowl models in 12GA, 20GA, and 28GA
- Shell Extractors
- Logo-Engraved Receivers
- 3-Tube Extended Turkey Choke Set or 5-Choke Field Set (Cylinder Bore for HS12)
- Corrosion-resistant chrome-lined barrels and chambers
- Tang-mounted Safety/Barrel Selector
- Dual locking lugs



Chrome-plated bores and chambers, sturdy synthetic furniture, and front fiber optic sights make every Silver Reserve Eventide a reliable multi-season performer under the roughest hunting conditions.



The Eventide Waterfowl models premium Cerakote polymer-ceramic coating, on the receiver and barrels, provides superior abrasion and wear resistance and added anti-corrosion protection against the wettest and muckiest waterfowling conditions.

MOSSBERG INTERNATIONAL SILVER RESERVE - EVENTIDE | Shell Extractors, Logo-Engraved Receiver, Chrome Plated Bores and Chambers, Dual Locking Lugs

TYPE	ITEM #	GAUGE	CHAMBER	BARREL	SIGHTS	CHOKES	OVERALL LENGTH	LOP	BARREL/ACTION/RECEIVER FINISH & ENGRAVING	STOCK & FINISH	DAH	DAC	APPROX. WEIGHT
SILVER RESERVE - EVENTIDE - TURKEY Logo-Engraved Receiver													
NEW Turkey	75485	12	3.5"	20" VR	Fiber Optic	Ext. Tky Set (3 Total)	38.25"	14.5"	MO Greenleaf w/Logo	Synthetic (MO Greenleaf)	2.25"	1.75"	6.75 lbs
NEW Turkey	75486	20	3"	20" VR	Fiber Optic	Ext. Tky Set (3 Total)	37.75"	14.5"	MO Greenleaf w/Logo	Synthetic (MO Greenleaf)	2.25"	1.75"	6.5 lbs
NEW Turkey	75487	28	3"	20" VR	Fiber Optic	Ext. Tky Set (3 Total)	37.75"	14.5"	MO Greenleaf w/Logo	Synthetic (MO Greenleaf)	2.25"	1.75"	6.5 lbs
SILVER RESERVE- EVENTIDE - WATERFOWL Cerakote Metal Finish, Logo-Engraved Receiver													
NEW Waterfowl	75488	12	3.5"	28" VR	Fiber Optic	Field Set (5 Total)	45.5"	14.5"	Cerakote (Patriot Brown) w/Logo	Synthetic (MO Vintage Shadowgrass)	2.25"	1.75"	7.25 lbs
SILVER RESERVE- EVENTIDE - ALL-PURPOSE Logo-Engraved Receiver													
All-Purpose	75470	12	3"	28" VR	Fiber Optic	Field Set (5 Total)	45"	14.5"	Matte Blue w/Logo	Synthetic (Black)	2.25"	1.75"	7 lbs
NEW All-Purpose	75483	20	3"	26" VR	Fiber Optic	Field Set (5 Total)	43"	14.5"	Matte Blue w/Logo	Synthetic (Black)	2.25"	1.75"	6.75 lbs
NEW All-Purpose HS12	75484	12	3"	18.5"	Fiber Optic	Cylinder Bore	36"	14.5"	Matte Blue w/Logo	Synthetic (Black)	2.25"	1.75"	6.75 lbs

Shell Extractors: Lifts shells from the chamber for easy removal when action is opened. **Ext. Tky Set:** Extended chokes. Includes two XXFull and one Improved Cylinder choke tubes. **Field Set:** Includes Cylinder, Improved Cylinder, Modified, Improved Modified and Full chokes (flush, blued finish). **VR:** Vent rib. **LOP:** Length of pull. **MO:** Mossy Oak brand camo. Mossy Oak, Greenleaf, and Shadowgrass are trademarks of Haas Outdoors, Inc. **Cerakote:** Polymer-ceramic coating. Cerakote is a registered trademark of NIC Industries, Inc. **DAC:** Stock drop at comb. **DAH:** Stock drop at heel. All models include a free gun lock.





MOSSBERG

RIFLES

HUNTING/TACTICAL



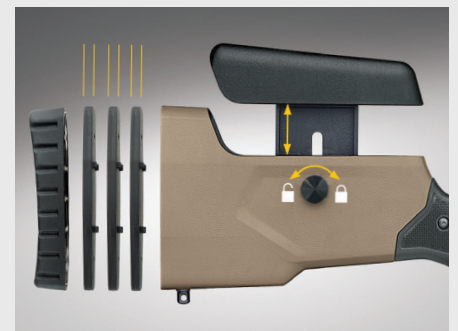
PATRIOT™ LR TACTICAL Bolt-Action Rifles



Patriot LR Tactical
6.5 PRC | 24" Barrel | #28148



Patriot LR Tactical
6.5 Creedmoor | 22" Barrel | #28147
Also available:
308 WIN | 22" Barrel | #28149



The new-design MDT® Patriot LR Tactical stock is user-adjustable for length of pull by use of three spacers (.75" range), and Comb/Cheekrest height is adjustable up to 2 inches. Comb adjustments are quick and easy: the user simply loosens the tension knob rearward, adjusts the height to the desired position, and re-tightens the knob to lock it in place.



Extend your down-range reach with the versatile Patriot LR Tactical.

Mossberg's newest Patriot rifles were designed to achieve high levels of accuracy at extended distances in an adjustment-ready, customizable package.

PATRIOT LR TACTICAL FEATURES

- Available in three popular long-range calibers
- New design MDT® stock is adjustable for LOP (.75") and Cheekrest height (2"), features a contrasting checkered grip and M-LOK attachment slots
- Aluminum V-Block bedding for barrel stability
- Medium Bull/Threaded 22" or 24" barrels
- Top-mounted 20 MOA Picatinny rail
- MDT® AICS-style magazine
- Standard Patriot features include drop box magazine, spiral fluted bolt, patented LBA user-adjustable trigger (2-7 lbs), and an oversized bolt handle



Patented LBA Adjustable Trigger is user-adjustable from 2 to 7 pounds. The trigger guard is oversized for use with gloved hands, and equipped with an integrated magazine release lever.



Standard features include a top-mounted 20 MOA Picatinny rail, and a stylish fluted bolt with oversized easy-grip bolt handle.



The new-design stock features aluminum V-Block bedding for barrel stability, and the forend features M-LOK® mounting ports on the sides and bottom for quick and easy accessory customization.



Barrels are threaded, muzzlebrake or suppressor-ready, and provided with a protective cap. All calibers utilize 5/8"-24 TPI threading.

PATRIOT LR TACTICAL New Design MDT® Stock with Adjustable LOP and Cheekrest/Comb, M-LOK® Accessory Compatability, MDT® AICS-Style Magazine												
TYPE	ITEM #	CALIBER	CAPACITY	BARREL	SCOPE BASE/RAIL	TWIST	OVERALL LENGTH	LOP	BARREL FINISH	STOCK	APPROX. WEIGHT	
Centerfire Rifle	28147	6.5 Creedmoor	10+1	22" Med. Bull/Thrd	Pic. Rail	1:8"	42"	13.50"-14.25"	Matte Blue	Adj. (LOP/Comb) Stock- Synthetic (Flat Dark Earth)	8.8 lbs	
Centerfire Rifle	28148	6.5 PRC	7+1	24" Med. Bull/Thrd	Pic. Rail	1:8"	44"	13.50"-14.25"	Matte Blue	Adj. (LOP/Comb) Stock- Synthetic (Flat Dark Earth)	9.4 lbs	
Centerfire Rifle	28149	308 WIN	10+1	22" Med. Bull/Thrd	Pic. Rail	1:10"	42"	13.50"-14.25"	Matte Blue	Adj. (LOP/Comb) Stock- Synthetic (Flat Dark Earth)	8.8 lbs	

*Overall Length: Measured when the stock is set at its minimum length of pull. Pic. Rail: Top Picatinny rail. Thrd: Threaded barrel with cap. Threading is 5/8" -24 TPI. LBA: Patriot Lightning Bolt-Action Trigger is user-adjustable from 2 to 7 lbs. LOP: Length of pull. M-LOK: Mounting slots on forend's sides and bottom are compatible with M-LOK equipped accessories. Magpul and M-LOK are registered trademarks of Magpul Industries Corp. MDT is a registered trademark of Modular Driven Technologies. All models include a free gun lock. Not all products are available in all states and jurisdictions. Check your state and local laws and regulations.

PATRIOT™ Bolt-Action Rifles



Patriot - Walnut/20" Threaded Barrel
NEW CALIBER
 400 LEGEND | #28176
 450 BUSHMASTER | #28043



Patriot - Synthetic/20" Threaded Barrel
NEW CALIBER
 400 LEGEND | #28175
 450 BUSHMASTER | #28013



Patriot - Synthetic/Cerakote/24" Threaded Barrel
 Available in 2 Magnum Calibers



Patriot - Synthetic
 Available in 13 Short- and Long-Action Calibers



Patriot - Walnut/24" Threaded Barrel/Rifle Sights
 300 WIN MAG | #28121



Patriot - Synthetic/Cerakote
 Available in 12 Short- and Long-Action Calibers



Select Patriot models have Cerakote® premium polymer-ceramic coating on the fluted bolt, bolt handle, barrel and thread cap— providing superior abrasion and wear resistance, and added anti-corrosion protection.



Behind every revolution is a Patriot. And these value-rich bolt-action rifles are no exception. With models to suit any style, the Patriot combines modern innovation with traditional styling. Attractive, accurate, and packed with features, the Mossberg Patriot is built on value and success in the field.



Patented LBA Lightning Bolt-Action Trigger is user-adjustable from 2 to 7 pounds. The bolt design is streamlined and checkered for easy, efficient operation.



400 Legend, 450 Bushmaster and Magnum caliber Patriot barrels are threaded, have an 11-degree match crown, and come with a protective cap. All standard caliber Patriot barrels have a recessed match crown.

PATRIOT FEATURES

- Short- and Long-Action calibers
- Drop box magazine
- Fluted, Threaded barrels — in 20," 22," and 24"
- Spiral fluted bolt
- Recessed match barrel crown
- Patented LBA user-adjustable trigger (2 to 7 lbs)
- Barrel Threading: 400 Legend, 450 Bushmaster and 338 WM = 11/16" - 24 TPI, 7mm REM MAG and 300 WM = 5/8" - 24 TPI

PATRIOT

ITEM NUMBER (ARRANGED BY CALIBER)																
SHORT-ACTION CALIBERS							LONG-ACTION CALIBERS									
6.5 CM	22-250 REM	243 WIN	7MM-08 REM	308 WIN	350 LEGEND	400 LEGEND	450 BM	25-06 REM	270 WIN	30-06 SPRG	7MM REM MAG	300 WIN MAG	338 WIN MAG	375 RUGER	CAP.	BARREL
SCOPE BASES OR SIGHTS																
OVERALL LENGTH*																
LOP																
TWIST**																
BARREL FINISH																
STOCK/FINISH																
APPROX. WEIGHT																
PATRIOT																
28026	27841	27835	27849	27861				27876	27882	27890					5+1	22" Fluted
					28137										4+1	22" Fluted
										28130	28132				3+1	24" Fluted & Threaded
						28176	28043								4+1	20" Threaded
						NEW					28121				3+1	24" Threaded
					28085										4+1	22" Fluted
27909	27843	27838	27851	27864				27877	27884	27892					5+1	22" Fluted
										28131	28118				3+1	24" Fluted & Threaded
						28175	28013								4+1	20" Threaded
						NEW										
PATRIOT WITH CERAKOTE Cerakote (Stainless) Finished Barrel and Bolt																
28008	28068	28005	28006	28007				28069	28009	28010					5+1	22" Fluted
													28136		3+1	24" Threaded
										28129	28135				3+1	24" Fluted & Threaded
														28073	3+1	22" Threaded

*Overall Length: All short-action calibers reduce the overall length by .5". Threaded: Threaded barrels, with cap provided. 400 Legend, 450 Bushmaster and 338 WM threading is 11/16"-24 TPI; 7mm REM MAG and 300 WM threading is 5/8"-24 TPI. **Twist: 6.5 Creedmoor models have a twist of 1:8"; 7mm REM MAG and 7mm-08 REM: 1:9.5"; .375 RGR: 1:12"; 22-250 REM: 1:14"; 400 Legend: 1:16"; 450 Bushmaster: 1:24". All other calibers listed have a 1:10" twist. LBA: Patriot Lightning Bolt-Action Trigger is user-adjustable from 2 to 7 lbs. Cross-Bolt: 375 Ruger walnut stocks have double cross-bolt supports. Adjustable FO Sights: Front fiber-optic sight, rear sight is adjustable for windage and elevation. LOP: Length of pull. Cerakote (Stainless): Stainless steel-colored polymer-ceramic coating. Cerakote is a registered trademark of NIC Industries, Inc. All models include a free gun lock. Not all products are available in all states and jurisdictions. Check your state and local laws and regulations.

PATRIOT™ VORTEX® Bolt-Action Rifles



Patriot Vortex Scoped Combo - Walnut
10 Calibers Available, Short- and Long-Action

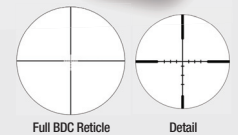


Patriot Vortex Scoped Combo - Synthetic
10 Calibers Available, Short- and Long-Action



PATRIOT VORTEX FEATURES

- Drop box magazine
- Fluted barrel
- Spiral fluted bolt and streamlined bolt handle
- Recessed match barrel crown
- Patented LBA user-adjustable trigger (2-7 lbs)
- Vortex Crossfire II scope, lens caps, and Vortex rings complete the package
- Magnum caliber barrels are threaded (5/8"-24 TPI)



Full BDC Reticle Detail

Crossfire® II 3-9x40 rifle scope with Dead-Hold® BDC reticle

With long eye relief, a fast-focus eyepiece, fully multicoated lenses, and resettable MOA turrets, there's no compromising on the Crossfire II. Clear, tough, and bright, the hard anodized single-piece aircraft-grade aluminum tube is nitrogen purged and O-ring sealed for water- and fog-proof performance. The Dead-Hold BDC reticle's customized hashmark design helps eliminate guesswork on holdover and windage corrections. It's good at varying ranges where estimating holdover is a concern.

PATRIOT VORTEX SCOPED COMBOS | Vortex Crossfire II 3-9x40mm and Rings

ITEM NUMBER (ARRANGED BY CALIBER)																			
SHORT-ACTION CALIBERS					LONG-ACTION CALIBERS														
6.5 CREEDMOOR	22-250 REM	243 WIN	7MM-08 REM	308 WIN	25-06 REM	270 WIN	30-06 SPRG	7MM REM MAG	300 WIN MAG	CAPACITY	BARREL	BASES	TWIST*	SCOPE/FEATURES	OVERALL LENGTH**	LOP	BARREL FINISH	STOCK	APPROX. WEIGHT
28028	28057	27939	28058	27940	28059	27941	27942			5+1	22" Fluted	Weaver-Style	*See Below	Vortex Crossfire II 3-9x40mm w/Vortex Rings	42.75***	13.75"	Matte Blue	Walnut Classic Style	8 lbs
								28127	28124	3+1	24" Fluted/Threaded	Weaver-Style	*See Below	Vortex Crossfire II 3-9x40mm w/Vortex Rings	44.75***	13.75"	Matte Blue	Walnut Classic Style	8 lbs
28001	28052	27932	28053	27933	28054	27934	27935			5+1	22" Fluted	Weaver-Style	*See Below	Vortex Crossfire II 3-9x40mm w/Vortex Rings	42.75***	13.75"	Matte Blue	Synthetic Classic Style (Black)	7.5 lbs
								28125	28123	3+1	24" Fluted/Threaded	Weaver-Style	*See Below	Vortex Crossfire II 3-9x40mm w/Vortex Rings	44.75***	13.75"	Matte Blue	Synthetic Classic Style (Black)	7.5 lbs

All Patriot Vortex Scoped Combos ship fully assembled. **Threaded:** Threaded barrels are 5/8"-24TPI, with cap provided. ***Twist:** 6.5 Creedmoor models have a twist of 1:8"; 7mm REM MAG and 7mm-08 REM models: 1:9.5"; 22-250 REM models: 1:14". All other calibers listed have a 1:10" twist. ****Overall Length:** All short-action calibers reduce the overall length by .5". **LBA:** Patriot Lightning Bolt-Action Trigger is user-adjustable from 2 to 7 lbs. **LOP:** Length of pull. **Crossfire II:** Vortex Crossfire II scope features Dead-Hold BDC reticle, lens caps, and Vortex rings. Vortex, Crossfire, and Dead-Hold are registered trademarks of Sheltered Wings, Inc. All models include a free gun lock. Not all products are available in all states and jurisdictions. Check your state and local laws and regulations.

PATRIOT™ LR HUNTER Bolt-Action Rifles

MOSSBERG



Patriot LR Hunter - Spider Gray
6.5 Creedmoor | 22" Barrel | #28103



Patriot LR Hunter - Spider Gray
300 WIN MAG | 24" Barrel | #28102

When you're hunting or target shooting far downrange, every detail and every fraction of an inch counts. We designed our new Patriot LR Hunter stock with precise contours for comfort and accuracy. The Monte Carlo elevated comb works in combination with the optics top rail to make sighting easy, keeping you reliably on target. And, the new stock utilizes a special coating process for a full-rifle micro-textured surface that provides a comfortable, firm hold in the field or at the range.



PATRIOT LR HUNTER FEATURES

- Mossberg LR Hunter Monte Carlo stock has machined aluminum bedding pillars for stability, is polymer-coated in Spider Gray finish with light micro-texture for enhanced gripability
- Benchrest-style forend is flat for use on stabilizing surfaces, has dual swivel studs for bipod and sling use, and a tapered shape that narrows toward the barrel for comfortable fit and grip with smaller or gloved hands
- Fluted and threaded barrels are muzzlebrake or suppressor-ready, with protective thread cap and 11 degree match crown
- Standard Patriot features include drop box magazine, spiral fluted bolt, patented LBA user-adjustable trigger (2-7 lbs), and an oversized bolt handle



LR Hunter stock has aluminum pillar bedding for stability and accuracy. The symmetrical profile with deep contoured grip wells provides a comfortable hold for left- or right-handed shooters.



The flat-bottom benchrest forend provides a stable resting surface for steady shots over long range distances and tapers inward toward the barrel for easy handling. Dual swivel studs simultaneously accommodate a bipod and sling.



Patented LBA Adjustable Trigger is user-adjustable from 2 to 7 pounds. An oversized bolt handle provides a sure grip, even with gloved hands.

PATRIOT LR HUNTER | Polymer-Coated Monte Carlo Hunting Stock, Top-Mounted Rail, LBA User-Adjustable Trigger, Fluted/Threaded Barrel and Fluted Bolt

TYPE	ITEM #	CALIBER	CAPACITY	BARREL	SCOPE BASE	TWIST	OVERALL LENGTH	LOP	METAL FINISH	STOCK/FINISH	APPROX. WEIGHT
Centerfire Rifle	28101	308 WIN	5+1	22" Fluted/Thrd	Pic. Rail	1:10"	42.25"	13.75"	Matte Blue	Polymer-Coated Monte Carlo Hunting Stock (Spider Gray)	6.5 lbs
Centerfire Rifle	28103	6.5 Creedmoor	5+1	22" Fluted/Thrd	Pic. Rail	1:8"	42.25"	13.75"	Matte Blue	Polymer-Coated Monte Carlo Hunting Stock (Spider Gray)	6.5 lbs
Centerfire Rifle	28104	6.5 PRC	4+1	24" Fluted/Thrd	Pic. Rail	1:8"	44.25"	13.75"	Matte Blue	Polymer-Coated Monte Carlo Hunting Stock (Spider Gray)	7.25 lbs
Centerfire Rifle	28102	300 WIN MAG	3+1	24" Fluted/Thrd	Pic. Rail	1:10"	44.75"	13.75"	Matte Blue	Polymer-Coated Monte Carlo Hunting Stock (Spider Gray)	7.5 lbs

LBA: Patriot Lightning Bolt-Action Trigger is user-adjustable from 2 to 7 lbs. **LOP:** Length of pull. **Thrd:** Threaded barrel, thread cap is included. **Pic. Rail:** Top Picatinny rail. All models include a free gun lock. Not all products are available in all states and jurisdictions. Check your state and local laws and regulations.

PATRIOT™ PREDATOR Bolt-Action Rifles



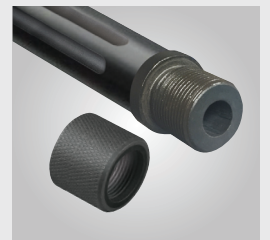
Patriot Predator - True Timber Strata/Brown Cerakote
7mm PRC | 24" Barrel | #28171
5 Additional Calibers Available
(Select models with 22" or 24" Barrel)



Patriot Predator - Flat Dark Earth
7mm PRC | 24" Barrel | #28170
4 Additional Calibers Available
(Select models with 22" or 24" Barrel)



Patriot Predator - Flat Dark Earth
450 Bushmaster | 16.25" Barrel/Rifle Sights | #28051



Patriot Predator barrels come standard with threading for adding a muzzlebrake or suppressor. 450 Bushmaster models have 11/16"-24 TPI, 22-250 REM have 1/2"-28 TPI. All other calibers have 5/8"-24 TPI. All barrels have an 11 degree match crown.



This Predator was born to hunt. Suppressor-ready. Optic-ready. Built on the powerful and field proven Patriot chassis, Predator rifles offer unmatched accuracy, dependability, and smooth triggers in a diverse lineup of calibers and multi-season configurations.



PATRIOT PREDATOR FEATURES

- Seven calibers offered, including 7mm PRC
- Top-mounted optics Picatinny rail
- All barrels are threaded, muzzlebrake or suppressor-ready, with 11 degree match crown
- Fluted barrels on 22" or 24" models
- Standard Patriot features include drop box magazine, spiral fluted bolt, patented LBA user-adjustable trigger (2-7 lbs), and an oversized bolt handle



Patented LBA Adjustable Trigger is user-adjustable from 2 to 7 pounds. The Patriot Predator oversized bolt handle provides a sure grip, even with gloved hands.



The standard top Picatinny rail makes mounting or repositioning optics quick and easy.



Camo models have Cerakote® premium polymer-ceramic coating on the fluted bolt, bolt handle, barrel and thread cap, providing superior abrasion and wear resistance, and added anti-corrosion protection.

PATRIOT PREDATOR | Top-Mounted Picatinny Rail, LBA User-Adjustable Trigger, Threaded Barrel and Fluted Bolt

ITEM NUMBER (ARRANGED BY CALIBER)

22-250 REM	243 WIN	308 WIN	6.5 CM	6.5 PRC	450 BM	7mm PRC	CAPACITY	BARREL	BASES/ SIGHTS	TWIST*	OVERALL LENGTH	LOP	BARREL FINISH	STOCK	APPROX. WEIGHT
						28171	3+1	24" Fluted/Thrd	Pic. Rail	1:8"	44.75"	13.75"	Cerakote (Patriot Brown)	Synthetic (True Timber Strata) – Classic Style	6.5 lbs
				28091			4+1	24" Fluted/Thrd	Pic. Rail	1:8"	44.25"	13.75"	Cerakote (Patriot Brown)	Synthetic (True Timber Strata) – Classic Style	6.5 lbs
28074	28044	28045	28046				5+1	22" Fluted/Thrd	Pic. Rail	*See Below	42.25"	13.75"	Cerakote (Patriot Brown)	Synthetic (True Timber Strata) – Classic Style	6.5 lbs
						28170	3+1	24" Fluted/Thrd	Pic. Rail	1:8"	44.75"	13.75"	Matte Blue	Synthetic (Flat Dark Earth) – Classic Style	6.5 lbs
				28090			4+1	24" Fluted/Thrd	Pic. Rail	1:8"	44.25"	13.75"	Matte Blue	Synthetic (Flat Dark Earth) – Classic Style	6.5 lbs
	27873	27874	27875				5+1	22" Fluted/Thrd	Pic. Rail	*See Below	42.25"	13.75"	Matte Blue	Synthetic (Flat Dark Earth) – Classic Style	6.5 lbs
						28051	4+1	16.25" Thrd	Pic. Rail/ Adj. FO Sights	1:24"	35.5"	13.75"	Matte Blue	Synthetic (Flat Dark Earth) – Classic Style	6.5 lbs

*Twist: 6.5 Creedmoor and 7mm PRC models have a twist of 1:8; 22-250 have a 1:14; all other calibers listed have a 1:10" twist. LBA: Patriot Lightning Bolt-Action Trigger is user-adjustable from 2 to 7 lbs. Thrd: Threaded barrels are 5/8"- 24TPI, (450 Bushmaster models are 11/16"- 24TPI, 22-250 REM are 1/2"- 28TPI), with cap provided. LOP: Length of pull. Cerakote: Patriot Brown polymer-ceramic coating. Cerakote® is a registered trademark of NIC Industries, Inc. True Timber® and Strata™ are trademarks of True Timber Outdoors Holding Company, LLC. All models include a free gun lock. Not all products are available in all states and jurisdictions. Check your state and local laws and regulations.

PATRIOT™ SUPER BANTAM™ Bolt-Action Rifles



Patriot Super Bantam™ Scoped Combo – Muddy Girl® Wild
4 Calibers Available



Patriot Super Bantam™ Scoped Combo – TrueTimber® Strata™
4 Calibers Available



Patriot Super Bantam™ Scoped Combo - Black
350 Legend | #28094
4 Additional Calibers Available

At Mossberg, we're dedicated to ensuring that hunters and recreational shooters are safely outfitted with a firearm that fits properly and comfortably. The Patriot Super Bantam stock design allows for 1" of length-of-pull adjustment flexibility for a more custom fit, plus Super Bantam models boast all of the features you'll find on full-sized Patriot rifles.



Innovative Stock Design
Patriot Super Bantams utilize our innovative variable LOP stock with an included 1" spacer.

PATRIOT SUPER BANTAM FEATURES

- Variable length of pull (12"-13") enhances control and comfort for smaller-stature shooters
- Five calibers offered
- Fluted barrels 20" or 22" barrels
- Standard Patriot features include drop box magazine, recessed match barrel crown, spiral fluted bolt with streamlined bolt handle, and patented LBA user-adjustable trigger (2-7 lbs)

PATRIOT SUPER BANTAM SCOPED COMBOS | 3-9x40mm Variable Scope, Fluted Barrels, Variable 12"-13" LOP

ITEM NUMBER (ARRANGED BY CALIBER)													
6.5 CM	243 WIN	7MM-08 REM	308 WIN	350 LEGEND	CAPACITY	BARREL	SCOPE BASES/SCOPE	TWIST*	OVERALL LENGTH	LOP	BARREL FINISH	STOCK/FINISH	APPROX. WEIGHT
28143	28142	28144	28145		5+1	20" Fluted	Weaver-Style/3-9x40mm	*See Below	38.5***	12-13"	Matte Blue	Variable LOP – Synthetic (Muddy Girl Wild)	7.5 lbs
28050	28065	28066	28067		5+1	20" Fluted	Weaver-Style/3-9x40mm	*See Below	38.5***	12-13"	Matte Blue	Variable LOP – Synthetic (True Timber Strata)	7.5 lbs
28027	27840	27853	27867		5+1	20" Fluted	Weaver-Style/3-9x40mm	*See Below	38.5***	12-13"	Matte Blue	Variable LOP – Synthetic (Black)	7.5 lbs
				28094	4+1	22" Fluted	Weaver-Style/3-9x40mm	1:16	40.5***	12-13"	Matte Blue	Variable LOP – Synthetic (Black)	7.5 lbs

*Twist: 6.5 Creedmoor models have a 1:8" twist, 7mm-08 REM models have a twist of 1:9.5". All other calibers listed have 1:10" twist. **Overall Length: Measured when the stock is at its minimum length of pull. LBA: Patriot Lightning Bolt-Action Trigger is user-adjustable from 2 to 7 lbs. LOP: Length of pull. Variable LOP: Length of pull is altered by use of included stock spacer. Muddy Girl® is a registered trademark owned by Muddy Girl Holdings, LLC. True Timber® and Strata™ are trademarks of True Timber Outdoors Holding Company, LLC. All models include a free gun lock. Not all products are available in all states and jurisdictions. Check your state and local laws and regulations.

PATRIOT™ NIGHT TRAIN Bolt-Action Rifles

MOSSBERG



Patriot Night Train
308 WIN | #27924



Patriot Night Train
300 WIN MAG | #28122



Patriot Night Train
6.5 Creedmoor | #28019

If you're looking for an entry-level long-range rifle package with premium quality and performance, you're looking in the right place. The Patriot Night Train bolt-action rifle offers the accuracy, dependability, and crisp trigger you'll find in higher-end models. So stop searching and start shooting.

PATRIOT NIGHT TRAIN FEATURES

- Top-mounted Picatinny rail
- Drop box magazine
- Fluted/Threaded barrels in 22" or 24" lengths, select models have removable SilencerCo muzzlebrake
- Night Train models have barrel threading, are suppressor-ready
- Patented LBA user-adjustable trigger (2-7 lbs)
- Packaged with an adjustable bipod, variable scope with flip-open lens caps, and neoprene comb raising kit



Patented LBA Lightning Bolt-Action Trigger is user-adjustable from 2 to 7 pounds. Oversized bolt handle provides a sure grip, even with gloved hands.



Select suppressor-ready Night Train rifles include fluted, threaded barrels with removable SilencerCo 3-port muzzlebrake with ASR mount.

PATRIOT NIGHT TRAIN | Picatinny Rail, Fluted Barrels, 6-24x50mm Scope, Bipod, Comb Raising Kit

TYPE	ITEM #	CALIBER	CAPACITY	BARREL	SCOPE BASE/RAIL	TWIST	SCOPE/FEATURES	OVERALL LENGTH	LOP	BARREL FINISH	STOCK	APPROX. WEIGHT
Night Train	27924	308 WIN	5+1	22" Fluted/Thrd+Mzl Brk	Pic. Rail	1:10"	6-24x50mm Scope/Caps, Bipod, Comb Raising Kit	44"	13.75"	Matte Blue	Synth. (OD Green)	9 lbs
Night Train	28122	300 WIN MAG	3+1	24" Fluted/Thrd+Mzl Brk	Pic. Rail	1:10"	6-24x50mm Scope/Caps, Bipod, Comb Raising Kit	44.5"	13.75"	Matte Blue	Synth. (OD Green)	9 lbs
Night Train	28019	6.5 Creedmoor	5+1	24" Fluted/Thrd	Pic. Rail	1:8"	6-24x50mm Scope/Caps, Bipod, Comb Raising Kit	42.25"	13.75"	Matte Blue	Synth. (Flat Dark Earth)	9 lbs

All Night Train models ship fully assembled. **LBA:** Patriot Lightning Bolt-Action Trigger is user-adjustable from 2 to 7 lbs. **LOP:** Length of pull. **Thrd+Mzl Brk:** Threaded barrel with removable SilencerCo muzzlebrake with ASR mount, thread cap is included. SilencerCo is a registered trademark of SilencerCo, LLC. **Thrd:** Threaded barrel with thread cap included. **Synth.:** Synthetic stock. **Pic. Rail:** Top Picatinny rail. All models include a free gun lock. Not all products are available in all states and jurisdictions. Check your state and local laws and regulations.

MVP® SCOUT/MVP® PATROL Bolt-Action Rifles

MOSSBERG



MVP Scout - Vortex Scoped Combo
7.62mm NATO/308 WIN | #27793



MVP Patrol
3 Calibers Available

These dependable, all-purpose rifles are perfect for the range or the ranch, as well as for tactical situations. They offer the convenience of AR-magazine compatibility with bolt-action accuracy and reliability.



MVP SCOUT & MVP PATROL FEATURES

- Threaded barrel/removable A2-style muzzlebrake and protective thread cap
- AR-magazine compatibility
- Patented LBA user-adjustable trigger (3-7 lbs)
- Pillar-bedded stocks with Picatinny rails. MVP Scout top-rail is 11" extended, and stock comes with two side-mounted rails
- Magpul® PMAG® (10-round 5.56mm/223 and 7.62mm/308 only)
- Oversized bolt handle
- MVP Scout features a front fiber-optic sight paired with a rail-mounted rear ghost ring. Also available as a Vortex Scoped Combo, with 2-7x32mm Crossfire II optic, with extended eye relief and Vortex rings
- MVP Patrol features fiber-optic rifle sights

MVP SCOUT

TYPE	ITEM #	CALIBER	CAPACITY	BARREL	SCOPE BASE	TWIST	OVERALL LENGTH	LOP	SCOPE	SIGHTS	METAL FINISH	STOCK/FINISH	APPROX. WEIGHT
MVP SCOUT RIFLE													
Centerfire Rifle	27778	7.62mm NATO/308 WIN*	10+1	16.25" Med Bull/Thrd+A2	Ext. Top/2 Side	1:10"	37.5"	13.75"	—	GR Rear/FO Front	Matte Blue	Synthetic (Black)	7 lbs
MVP SCOUT - VORTEX SCOPED COMBO 2-7x32mm Crossfire II Scout Scope with V-Plex Reticle and Extended Eye Relief													
Vortex Combo	27793	7.62mm NATO/308 WIN*	10+1	16.25" Med Bull/Thrd+A2	Ext. Top/2 Side	1:10"	37.5"	13.75"	2-7x32mm	GR Rear/FO Front	Matte Blue	Synthetic (Black)	8.25 lbs

***Caliber:** 7.62mm rifles can accept both M1A/M14 and LR-308/SR-25 style magazines. **LBA:** MVP Lightning Bolt-Action Trigger is user-adjustable from 3 to 7 lbs. **GR Rear/FO Front:** Rail-mounted rear ghost ring and elevated front fiber-optic sights. **LOP:** Length of pull. **Thrd+A2:** Threaded barrel with A2-style flash suppressor. Thread cap is included. **Ext. Top/2 Side:** 11" receiver/barrel-mounted Picatinny rail, and side-mounted short rails. **PMAG:** Magpul PMAG magazines. Magpul and PMAG are registered trademarks of Magpul Industries Corp. **Scope:** 2-7x32mm Vortex Crossfire II Scout Scope with extended eye relief. Vortex rings and lens caps included. Vortex and Crossfire are registered trademarks of Sheltered Wings, Inc. All models include a free gun lock. Not all products are available in all states and jurisdictions. Check your state and local laws and regulations.

MVP PATROL

TYPE	ITEM #	CALIBER	CAPACITY	BARREL	SCOPE BASE/RAIL	TWIST	OVERALL LENGTH	LOP	SIGHTS	BARREL FINISH	STOCK	APPROX. WEIGHT
Centerfire Rifle	27716	5.56mm NATO/223 REM	10+1	16.25" Med Bull/Thrd+A2	Pic. Rail	1:9"	36.5"	13.25"	FO Rifle	Matte Blue	Synthetic (Black)	6.75 lbs
Centerfire Rifle	27707	300 AAC BLACKOUT	10+1	16.25" Med Bull/Thrd+A2	Pic. Rail	1:7"	36.5"	13.75"	FO Rifle	Matte Blue	Synthetic (Black)	6.75 lbs
Centerfire Rifle	27738	7.62mm NATO/308 WIN*	10+1	16.25" Med Bull/Thrd+A2	Pic. Rail	1:10"	37.5"	13.75"	FO Rifle	Matte Blue	Synthetic (Black)	7 lbs
Centerfire Rifle	27766	5.56mm NATO/223 REM	5+1	16.25" Med Bull/Thrd+A2	Pic. Rail	1:9"	36.5"	13.25"	FO Rifle	Matte Blue	Synthetic (Black)	6.75 lbs
Centerfire Rifle	27767	7.62mm NATO/308 WIN*	5+1	16.25" Med Bull/Thrd+A2	Pic. Rail	1:10"	37.5"	13.75"	FO Rifle	Matte Blue	Synthetic (Black)	7 lbs

***Caliber:** 7.62mm rifles can accept both M1A/M14 and LR-308/SR-25 style magazines. **LBA:** MVP Lightning Bolt-Action Trigger is user-adjustable from 3 to 7 lbs. **FO Rifle:** Front fiber-optic and rear adjustable rifle sights. **Thrd+A2:** Threaded barrel with A2-style flash suppressor. Thread cap is included. **Pic. Rail:** Receiver-mounted Picatinny rail. **PMAG:** 10-round models only feature Magpul PMAG magazines. Magpul and PMAG are registered trademarks of Magpul Industries Corp. All models include a free gun lock. Not all products are available in all states and jurisdictions. Check your state and local laws and regulations. **—** Canada only.

802 PLINKSTER™/817™ Bolt-Action Rifles

MOSSBERG
INTERNATIONAL



802 Plinkster
22LR | #38230



802 Plinkster - Scoped Combo
22LR | #38232



817 Bolt-Action
17HMR | #38191

With our 802 Plinkster or 817 bolt-actions, a day of plinking, small game hunting, or target shooting has never been more fun. These rifles offer low recoil and confidence-building accuracy in an easy-to-handle lightweight bolt-action.



Synthetic stock features a stippled grip and forend; and has a thick, vented rubber recoil pad for shooting comfort.



For optics mounting ease, 817 models have Weaver-style bases (left), and 802 Plinkster models have a 3/8" dovetail receiver (right).

802 FEATURES

- 22LR
- Blued 18" barrel
- 10-round magazine
- Synthetic stock
- Adjustable Rifle Sights
- 4X Scoped Combo

817 FEATURES

- 17HMR
- Blued 21" barrel
- 5-round magazine
- Synthetic stock
- Weaver-style scope bases



MOSSBERG INTERNATIONAL 802 PLINKSTER - 22LR

TYPE	ITEM #	CALIBER	CAPACITY	BARREL	TWIST	SIGHTS/SCOPE	OVERALL LENGTH	LOP	METAL FINISH	STOCK & FINISH	APPROX. WEIGHT
802 PLINKSTER											
Synthetic Stock	38230	22LR	10+1	18"	1:16"	Adj. Rifle	37"	14.25"	Blue	Synthetic (Black)	4 lbs
802 PLINKSTER SCOPED COMBO 4X Scope											
Scoped Combo - Synthetic Stock	38232	22LR	10+1	18"	1:16"	Adj. Rifle + 4x Scope	37"	14.25"	Blue	Synthetic (Black)	4.5 lbs

MOSSBERG INTERNATIONAL 817 - 17HMR

TYPE	ITEM #	CALIBER	CAPACITY	BARREL	TWIST	SCOPE BASES	OVERALL LENGTH	LOP	METAL FINISH	STOCK	APPROX. WEIGHT
Synthetic Stock	38191	17HMR	5+1	21"	1:9"	Weaver-Style	40"	14.25"	Blue	Synthetic (Black)	4.5 lbs

LOP: Length of pull. Adj. Rifle: Rifle sights adjust for windage and elevation. All models include a free gun lock. Not all products are available in all states and jurisdictions. Check your state and local laws and regulations.

715T™ Semi-Automatic Rimfire Rifles

MOSSBERG
INTERNATIONAL



715T - Green Dot Combo
22LR | #37240

A lightweight, fun-to-shoot 22LR rimfire. Easy to handle, our popular 715T is not only a great field gun for small game hunting, but it makes a perfect choice as an all-around utility rifle choice for controlling varmints or target shooting.



715T
22LR | #37209



715T - Red Dot Combo
22LR | #37234

715T FEATURES

- Adjustable LOP stocks (3.25" range) ensure a proper, more comfortable fit
- Vented quad-rail forend
- Green Dot/Red Dot Combos provide long eye-relief, top-rail mounting flexibility, and adjust for windage and elevation
- 25-round models come with an accessory magazine loader



715T adjustable stocks have pistol grips and a LOP range of more than 3" using an integrated lever. The stocks also have an interchangeable FLEX recoil pad (except #37240).



All 715T rifles come with a vented quad-rail forend, for use with a variety of available accessories like lights, sights, lasers, and vertical forend grips.



For enhanced sighting options, Green Dot and Red Dot Combos offer long eye relief, conveniently mount to/and are repositionable on the flat-top rail, and are adjustable for windage and elevation.



25-round models come with a convenient accessory magazine loader for faster, easier magazine loading.

MOSSBERG INTERNATIONAL 715T

TYPE	ITEM #	CALIBER	MAGAZINE	CAPACITY	BARREL	SIGHTS	TWIST	OVERALL LENGTH*	LOP	STOCK & FINISH	BARREL FINISH	APPROX. WEIGHT
715T FLAT-TOP												
Adj. Stock	37209	22LR	25-Rd. & Loader	25+1	16.25"+A2	Rail-Mnt Adj. Front/Rear	1:16"	33"	11"-14.25"	Adj. LOP Stock/FLEX Pad – Synthetic (Black)	Blue	5.5 lbs
Adj. Stock	37205	22LR	10-Rd. Full-Profile	10+1	16.25"+A2	Rail-Mnt Adj. Front/Rear	1:16"	33"	11"-14.25"	Adj. LOP Stock/FLEX Pad – Synthetic (Black)	Blue	5.5 lbs
715T FLAT-TOP – GREEN DOT COMBO Dead Ringer® Green Dot Sight: 1X Magnification, 4 Reticle Configurations, Multiple Brightness Settings, Adjusts for Windage/Elevation												
Adj. Stock	37240	22LR	25-Rd. & Loader	25+1	16.25"+A2	Rail-Mnt 1X Green Dot	1:16"	32.5"	10.5"-14.25"	Adj. LOP Stock – Synthetic (Flat Dark Earth)	Blue	5.75 lbs
715T FLAT-TOP – RED DOT COMBO 1x30mm Red Dot Sight: Red/Green Illumination, Adjusts for Windage/Elevation												
Adj. Stock	37234	22LR	25-Rd. & Loader	25+1	16.25"+A2	Rail-Mnt 30mm Red Dot	1:16"	33"	11"-14.25"	Adj. LOP Stock/FLEX Pad – Synthetic (Black)	Blue	5.75 lbs
Adj. Stock	37232	22LR	10-Rd. Full-Profile	10+1	16.25"+A2	Rail-Mnt 30mm Red Dot	1:16"	33"	11"-14.25"	Adj. LOP Stock/FLEX Pad – Synthetic (Black)	Blue	5.75 lbs

*Overall Length: Length is measured with stock at minimum length of pull. Full-profile: 10-Round magazine has shape and appearance of 25-round magazine. LOP: Length of pull. Adj. LOP Stock: 6-Position stock with variable length of pull. LOP is adjusted using the integrated lever. FLEX Pad: Stock uses FLEX-enabled interchangeable recoil pad, compatible with other FLEX pads (sold separately). Loader: Includes accessory magazine loader. Adj. Front/Rear: Picatinny rail-mounted front and rear sights are removable and adjustable. +A2: A2-style muzzlebrake. Dead Ringer is a registered trademark of Rock Ridge Outdoors LLC. All models include a free gun lock. Not all products are available in all states and jurisdictions. Check your state and local laws and regulations.

702 PLINKSTER®

Semi-Automatic Rimfire Rifles

MOSSBERG
INTERNATIONAL



702 Plinkster - 25-Round
22LR | #37073



702 Plinkster - 10-Round
22LR | #37072



702 Plinkster - 10-Round - Bantam
22LR | 12.25" LOP | #37071

702 Plinkster: Let the Fun Begin.

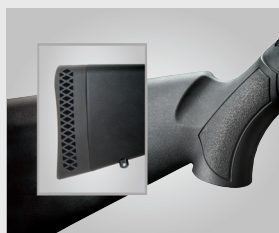
For small game hunting or plinking, you can't go wrong with our 702 Plinkster. It boasts the features you will want for a fun day of shooting, like a free-floating barrel for improved accuracy and adjustable fiber-optic front and rear rifle sights.

702 PLINKSTER FEATURES

- Lightweight and easy to handle
- Free-floating barrel for improved accuracy
- Fiber-optic front/rear rifle sights are adjustable for windage and elevation
- Dovetailed receiver accepts 3/8" scope mounts
- Reduced LOP (12.25") model



Front and rear fiber-optic sights are adjustable for windage and elevation, provide excellent target acquisition in a variety of conditions.



Synthetic stock features a stippled grip and forend; and has a thick, vented rubber recoil pad for shooting comfort.



MOSSBERG INTERNATIONAL 702 PLINKSTER

TYPE	ITEM #	CALIBER	CAPACITY	BARREL	TWIST	SIGHTS/SCOPE	OVERALL LENGTH	LOP	FINISH	STOCK	APPROX. WEIGHT
Black Synthetic	37073	22LR	25+1	18"	1:16"	Adj. FO Rifle	37"	14.25"	Blue	Synthetic (Black)	4 lbs
Black Synthetic	37072	22LR	10+1	18"	1:16"	Adj. FO Rifle	37"	14.25"	Blue	Synthetic (Black)	4 lbs
Black Synthetic - Bantam	37071	22LR	10+1	18"	1:16"	Adj. FO Rifle	35"	12.25"	Blue	Synthetic (Black)	4 lbs

Adj. Rifle: Rifle sights adjust for windage and elevation. **LOP:** Length of pull. All models include a free gun lock. Not all products are available in all states and jurisdictions. Check your state and local laws and regulations.



ACCESSORIES

MOSSBERG



CHOKE TUBES

MOSSBERG

ACCU-CHOKE™ AND ACCU-MAG™ CHOKE TUBES

For consistent pattern performance with a variety of loads, look for Accu-Choke and Accu-Mag choke tubes in a variety of gauges and constrictions for hunting and recreational shooting. Chokes fit a variety of pump-action and autoloading shotgun models (see chart for availability).

X-FACTOR™ PORTED CHOKE TUBES

Combining precision-engineered choke constrictions with two rows of specially angled ports, X-FACTOR choke tubes provide dedicated waterfowl and turkey hunters with an added edge in the field. X-FACTOR tubes fit a variety of pump-action and autoloading shotgun models (see chart for availability).

CHOKE TUBES

For Mossberg 500, 505, 535, 835, 930, 940, 935 and Maverick 88 Models

ITEM # DESCRIPTION GAUGE FOR USE WITH MODELS

ACCU-CHOKE™ TUBES

For Lead, Steel & Other Non-Toxic Shot

95235	Skeet	12GA	500, 535, 930, 940, 88
95200	Improved Cylinder	12GA	500, 535, 930, 940, 88
95195	Modified	12GA	500, 535, 930, 940, 88
95190	Full	12GA	500, 535, 930, 940, 88
95267	XX-Full Turkey (Lead Only)	12GA	500, 535, 930, 940, 88
95225	Improved Cylinder	20GA	500, 505, 88
95220	Modified	20GA	500, 505, 88
95215	Full	20GA	500, 505, 88
95230	X-Full Turkey (Lead Only)	20GA	500, 505, 88

ACCU-MAG™ CHOKE TUBES

For 835 and 935 Models (For Lead, Steel & Other Non-Toxic Shot)

95256	Skeet	12GA	835, 935
95252	Improved Cylinder	12GA	835, 935
95253	Modified	12GA	835, 935
95254	Full	12GA	835, 935
95255	X-Full	12GA	835, 935
95257	Ulti-Full Turkey Tube (Lead Only)	12GA	835, 935

X-FACTOR™ PORTED CHOKE TUBES – WATERFOWL

For 835 and 935 Models

95290	Improved Cylinder	12GA	835, 935
95280	Modified	12GA	835, 935
95270	Full	12GA	835, 935

X-FACTOR™ PORTED CHOKE TUBES – TURKEY

For Mossberg 500, 505, 535, 835, 930, 940, 935, and Maverick 88 Models

95258	Ulti-Full Tky Tube (Lead Only)	12GA	835, 935
95268	XX-Full Tky Tube (Lead Only)	12GA	500, 535, 930, 940, 88
95231	X-Full Tky Tube (Lead Only)	20GA	500, 505, 88

CHOKE TUBE WRENCH

95205	Choke Tube Wrench	All	All Accu-Choke and Accu-Mag
-------	-------------------	-----	-----------------------------

STAND-OFF CHOKE TUBE

95417	Stand-Off Choke Tube	12GA	500, 590, 535, 930, 940, 88
-------	----------------------	------	-----------------------------

Add stand-off capability to any 12GA Accu-Choke barrel. Screw-in installation.

Requires no tools.



#95417



Accu-Choke: Accu-Choke choke tubes may be used on the following interchangeable choke models: Mossberg, Smith & Wesson, Savage, U.S. Repeating Arms and Maverick. **Accu-Mag:** Accu-Mag choke tubes are for use with 935, 835 and SSI-One models only. See the chart at right for game-specific choke tube recommendations.



RECOMMENDED CHOKE TUBE & LOAD USAGE

	GAME	GAUGE/BORE	DISTANCE	CHOKE	SHOT SIZE
	QUAIL WOODCOCK	12 & 20	15–30 YDS.	SK/IC/M	#7½, 8, 9
		12 & 20	30+ YDS.	IC/M	#7½, 8
	DOVE	12 & 20	20–30 YDS.	IC/M	#7½, 8, 9
		12 & 20	30+ YDS.	IC/M	#7½, 8
	PHEASANT GROUSE	12 & 20	20–30 YDS.	IC/M	#5, 6, 7½
		12	30+ YDS.	M/F	#4, 5, 6
	TURKEY	12 & 20	15–30 YDS.	F/XF	#4, 5, 6
		12	30+ YDS.	XF/XF	#4, 5, 6
	RABBIT	12, 20 & .410	15–30 YDS.	IC/M	#4, 5, 6, 7½
		12 & 20	30+ YDS.	IC/M	#4, 5, 6
	SQUIRREL	12, 20 & .410	15–30 YDS.	IC/M/F	#4, 5, 6, 7½
		12 & 20	30+ YDS.	IC/M/F	#4, 5, 6
	LARGE DUCKS (MALLARD, PINTAIL)	12 & 20	15–30 YDS.	IC/M	#1, 2, 3, 4
		12	30+ YDS.	IC/M/F	BB, #1, 2, 3
	SMALL DUCKS (TEAL, BUFFLEHEAD)	12 & 20	20–30 YDS.	IC/M	#3, 4, 6
		12 & 20	30+ YDS.	M/F	#3, 4
	LARGE GEESE (GIANT, WESTERN CANADA)	12	20–30 YDS.	IC/M	T, BBB, BB, #1
		12	30+ YDS.	M/F/XF	T, BBB, BB
	MEDIUM GEESE (SNOW, LESSER CANADA)	12	20–30 YDS.	IC/M	BBB, BB, #1
		12	30+ YDS.	M/F	BBB, BB

Choke and shot size selection will vary depending on target distance and hunting conditions. **SK:** Skeet. **IC:** Improved Cylinder. **M:** Modified. **F:** Full. **XF:** X-Full. **XXF:** XX-Full.

Knowing and using the correct choke tube suited for your particular hunting application is as important as any other aspect of the hunt. Use the handy guide above for recommendations.

450 BUSHMASTER MUZZLE DEVICE | Fits barrels threaded for 11/16-24 UNEF



#95282

Multi-directional ventilation ports and blast baffles allow for reduced recoil, improved muzzle control, and flash mitigation. Easy installation and removal with common tools (3/4" Open End Wrench). Target crown for projectile stabilization and accuracy; Enclosed end for snag-free use.

SEE CURRENT SELECTIONS FOR SHOOTING GEAR, CLOTHING, AND ACCESSORIES AT MOSSBERG.COM

RAILS/HEAT SHIELDS/SCOPE COMBOS

PICATINNY RAILS/SCOPE BASES

ITEM #	DESCRIPTION	GAUGE/CALIBER	MODEL COMPATIBILITY
PICATINNY RAILS/SCOPE BASES			
96205	Scope Base, Matte Blue Finish	5.56/223	MVP
96206	Scope Base, Matte Blue Finish	7.62/308 Short-Action	MVP Patriot
96207	Scope Base, Matte Blue Finish	Long-Action	Patriot
95207	Picatinny Rail, Blued Finish	All Gauges	Drilled & Tapped Shotguns
96200	Picatinny Rail, Matte Blue Finish	All Gauges	Drilled & Tapped Shotguns
96201	Picatinny Rail, Marinecote Finish	All Gauges	Drilled & Tapped Shotguns
96202	Scope Base, Mossy Oak® New Break-Up®	All Gauges	Drilled & Tapped Shotguns
96203	Scope Base, Mossy Oak® Obsession®	All Gauges	Drilled & Tapped Shotguns



#96205
for 5.56/223 MVP Models



#96206
for 7.62/308 MVP Models and
Short-Action Patriot Models



#96207
for Long-Action Patriot Models



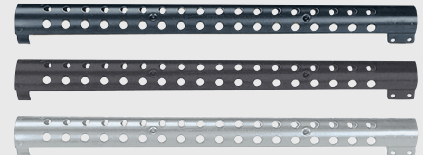
BARREL HEAT SHIELDS

ITEM #	DESCRIPTION	GAUGE	MODEL COMPATIBILITY
BARREL HEAT SHIELDS			
95065	Barrel Heat Shield - Blue Finish	12GA	500, 500 FLEX, 590 (Excludes 590A1)
95066	Barrel Heat Shield - Parkerized Finish	12GA	500, 500 FLEX, 590 (Excludes 590A1)
95068	Barrel Heat Shield - Marinecote Finish	12GA	500, 500 FLEX, 590 (Excludes 590A1)

Blue | #95065

Parkerized | #95066

Marinecote | #95068



BARREL/SCOPE COMBOS | Barrel and Integral Scope Base/Cantilever and Variable 3-9x40mm Scope

ITEM #	DESCRIPTION/FEATURES	GAUGE	BARREL LENGTH/BORE & FINISH	MODEL COMPATIBILITY
92156	500" 12GA Barrel with Integral Scope Base/Cantilever and 3-9x40mm Variable Scope	12GA	24" Fully Rifled Bore – Blue	(12GA) 500, 500 FLEX, Maverick 88
92010	500" 20GA Barrel with Integral Scope Base/Cantilever and 3-9x40mm Variable Scope	20GA	24" Fully Rifled Bore – Blue	(20GA) 500, 500 FLEX, Maverick 88
95355	535 ATS™ Barrel with Integral Scope Base/Cantilever and 3-9x40mm Variable Scope	12GA	24" Fully Rifled Bore – Blue	535 ATS
90835	835" Ulti-Mag® Barrel with Integral Scope Base/Cantilever and 3-9x40mm Variable Scope	12GA	24" Fully Rifled Bore – Blue	835 Ulti-Mag
92356	Remington® Model 870® 12GA Barrel with Integral Scope Base/Cantilever and 3-9x40mm Variable Scope	12GA	24" Fully Rifled Bore – Matte Blue	(12GA) Remington 870

Barrel/Scope combos are compatible within model, gauge and capacity. Remington and 870 are registered trademarks of Remington Arms Company, LLC.



SEE CURRENT SELECTIONS FOR SHOOTING GEAR, CLOTHING, AND ACCESSORIES AT MOSSBERG.COM

Not all products are available in all states and jurisdictions. Check your state and local laws and regulations.

STOCKS/FORENDS/RIFLE MAGAZINES

MOSSBERG

STOCKS, FORENDS, RAILS & MAGAZINES

ITEM #	DESCRIPTION/FEATURES	GAUGE/CALIBER	FOR THE FOLLOWING MODELS
STOCKS AND FOREARMS			
95010	Synthetic Pistol Grip	.410 Bore	500
95005	Synthetic Pistol Grip	20GA	500, 505, 88
95000	Synthetic Pistol Grip (with Q.D. Swivel Posts)	12GA	835, 535, 500, 590, 590A1, 88
95025	Bantam Synthetic Buttstock – Black (13" LOP)	.410 Bore	500
95035	+4 Shell Holder Stock – Black Syn. (13.87" LOP)	12GA	835, 535, 500, 590, 590A1, 88
95030	Synthetic Field Buttstock – Black (14" LOP)	12GA	835, 535, 500, 590, 590A1, 88
95051	Synthetic Forearm – Corn Cob Style - Black	12GA	835, 535, 500, 590, 590A1
95031	Synthetic Forearm – Tri-Rail - Black	12GA	835, 535, 500, 590, 590A1

ACCESSORIES

95300	Ghost Ring Sight Kit	12GA	500, 590, 590A1, 930
19297**	Charging Handle	12GA	940, 930, 935
95092	Loc-Box Firearm Security System	All Gauges	*See Note Below
95507	Cablelock – Single Unit	All Gauges	940, 935, 930, 835, 535, 500, 505, 590, 695, 100
95530	Cablelock – 5 Pack (Keyed Alike)	All Gauges	940, 935, 930, 835, 535, 500, 505, 590, 695, 100

RIFLE MAGAZINES

95347	Standard Short-Action 5-Round Magazine	Standard/Short*	Patriot, 4X4
95033	Standard Long-Action 5-Round Magazine	Standard/Long*	Patriot, 4X4
95034	Magnum Long-Action 3-Round Magazine	Magnum/Long*	Patriot, 4X4
95036	375 Ruger 3-Round Magazine	375 Ruger Only	Patriot
95037	450 Bushmaster 4-Round Magazine	450 Bushmaster Only	Patriot
95038	350 Legend 4-Round Magazine	350 Legend Only	Patriot
95039	6.5 PRC 4-Round Magazine	6.5 PRC Only	Patriot
NEW 95032	400 Legend 4-Round Magazine	400 Legend Only	Patriot
NEW 95046	Single Shot Sled	Short-Action	Patriot
95713	715T/715P/Tact 22 Semi-Auto 10-Rd Full-Profile	22LR	715T, 715P, Tactical 22
95712	715T/715P/Tact 22 Semi-Auto 25-Rd Mag. & Loader	22LR	715T, 715P, Tactical 22
95725	702 Plinkster Semi-Auto 25-Round Mag. & Loader	22LR	702 Plinkster, FLEX-22
95702	702 Plinkster Semi-Auto 10-Round Magazine	22LR	702 Plinkster, FLEX-22
95803	22LR Bolt-Action 10-Round Magazine	22LR	802 Plinkster, 801 Half-Pint
95887	817 Bolt-Action 5-Round Magazine	17HMR	817
95135	Blaze/Blaze-47 10-Round Magazine	22LR	Blaze, Blaze-47
95136	Blaze/Blaze-47 25-Round Magazine	22LR	Blaze, Blaze-47

Loc-Box: Use with Mossberg 935, 940, 930, 835, 535, 500, 505, 590, 590A1, HS 410, 5500, 9200, and Maverick 88 and 91 models. Compatible with right-handed Remington models 870, 1100 and 11-87 and Winchester model 1300. Other models may also apply. **Standard/Long:** Compatible with 25-06 REM, 270 WIN, and 30-06 SPRG calibers. **Magnum/Long:** Compatible with 7mm PRC, 7mm REM MAG, 300 WIN MAG, and 338 WIN MAG calibers. **Standard/Short:** Compatible with 243 WIN, 308 WIN, 7mm-08 REM, 6.5 Creedmoor calibers. **Drilled and Tapped Shotguns:** Fits all receivers that are factory drilled and tapped. Mossy Oak, Break-Up, and Obsession are registered trademarks of Haas Outdoors, Inc.

Dealers: Item number with two asterisks (**) indicates a SKU that does not come in display ready/clamshell packaging.



JM PRO DROP-IN ADJUSTABLE MATCH TRIGGER

- Fits AR-15s and AR-10s with .154" trigger and hammer pin holes.
- Designed in conjunction with legendary World Champion Jerry Miculek, this Drop-in Trigger is factory-set at a pull weight of 4 pounds (User-adjustable range: 3 to 6 lbs). The trigger offers a crisp, creep-free break and is user-adjustable for overtravel.



CENTERFIRE BOLT-ACTION MAGAZINES (Patriot/4x4)

Standard Long-Action Calibers	(5-Round)	#95033
Magnum Long-Action Calibers	(3-Round)	#95034
Standard Short-Action Calibers	(5-Round)	#95347
375 Ruger	(3-Round)	#95036
450 Bushmaster	(4-Round)	#95037
350 Legend	(4-Round)	#95038
6.5 PRC	(4-Round)	#95039
NEW 400 Legend	(4-Round)	#95032
NEW Single Shot Sled (Short-Action)	(1-Round)	#95046

Standard & Magnum Magazines Available in Various Calibers/Capacities



22LR MAGAZINES AND LOADERS

25-Round with Loader (702 Plinkster, FLEX-22) #95725

25-Round with Loader (715T/715P, Tactical .22) #95712

10-Round with Full-Size Shape and Feel (715T/715P, Tactical .22) #95713



Not all products are available in all states and jurisdictions. Check your state and local laws and regulations.

FLEX™ SYSTEM

Accessories and Conversion Kits

Coordinated stock, forend and recoil pad assemblies – quick-release components that allow shooters to easily switch applications – in nearly limitless combinations.

FLEX STOCK COMPACT LOP

Black Synthetic
Compact 12.5" LOP
Medium Recoil Pad
#95223



FLEX STOCK FULL-SIZE LOP

Black Synthetic
14.25" LOP
Medium Recoil Pad
#95224



FLEX STOCK MEDIUM LOP

Black Synthetic
13.5" LOP
Medium Recoil Pad
#95226



FLEX STOCK MEDIUM LOP

Synthetic / Mossy Oak®
Break-Up® Infinity™
13.5" LOP
Medium Recoil Pad
#95227



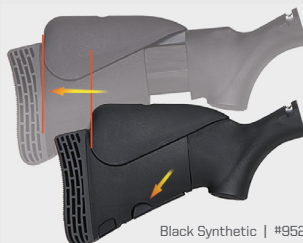
FLEX STOCK MEDIUM LOP

Synthetic / Advantage® Max-4™
13.5" LOP
Medium Recoil Pad
#95228



FLEX 4-POSITION ADJUSTABLE STOCK WITH DUAL COMB (HUNTING STYLE)

Adjustable 12.75"-14.625" LOP, Medium Recoil Pad, Interchangeable High & Low Combs for improved sightlines while using a mounted scope or sighting down the barrel.



Black Synthetic | #95221



Mossy Oak® Break-Up® Infinity™ | #95222

FLEX 6-POSITION ADJUSTABLE STOCK (TACTICAL STYLE)

Adjustable 10.75"-14.25" LOP, Black Synthetic, Medium Recoil Pad. Gives users 3"+ variable length of pull for various applications – with the click of the built-in lever.



Black Synthetic | #95219

FLEX PISTOL GRIP



Black Synthetic | #95218

FLEX RECOIL PAD ASSEMBLIES

FLEX Recoil Pad Assemblies allow shooters to adjust length of pull for application-specific hunting or security needs, or adjust for comfort.



Large | #95212
1.5" Thickness

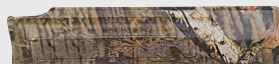
Medium | #95211
1.25" Thickness

Small | #95210
.75" Thickness

FLEX STANDARD FOREENDS (FIELD STYLE)



Black Synthetic | #95214



Mossy Oak® Break-Up® Infinity™ | #95216



Advantage® Max-4™ | #95217

FLEX RAILED FOREENDS (TACTICAL STYLE)

Tri-Rail Configuration, Optional Short Bottom Rail, Ambidextrous Side Touchpad Accommodation (inset), Black Synthetic



Black Synthetic | #95213



FLEX ACCESSORIES

ITEM #	DESCRIPTION/FEATURES	TYPE FINISH OR PATTERN	FITS THE FOLLOWING
FLEX RECOIL PAD ASSEMBLIES			
95210	FLEX Recoil Pad Assembly – .75" Thickness (Small)	Rubber (Black)	FLEX Standard Stocks, FLEX 4-Position Adjustable Stocks
95211	FLEX Recoil Pad Assembly – 1.25" Thickness (Medium)	Rubber (Black)	FLEX Standard Stocks, FLEX 4-Position Adjustable Stocks
95212	FLEX Recoil Pad Assembly – 1.50" Thickness (Large)	Rubber (Black)	FLEX Standard Stocks, FLEX 4-Position Adjustable Stocks
FLEX FORENDS			
95213	FLEX Tactical Forend – Railed (Extra Short Rail, Touchpad Accommodation)	Synthetic (Black)	500/590 FLEX Shotgun (12GA or 20GA)
95214	FLEX Standard Forend	Synthetic (Black)	500/590 FLEX Shotgun (12GA or 20GA)
95216	FLEX Standard Forend	Synthetic (MO Break-Up Infinity)	500/590 FLEX Shotgun (12GA or 20GA)
95217	FLEX Standard Forend	Synthetic (RT Adv. Max-4)	500/590 FLEX Shotgun (12GA or 20GA)
FLEX PISTOL GRIP & STOCKS			
95218	FLEX Pistol Grip	Synthetic (Black)	500/590 FLEX Shotgun (12GA or 20GA)
95219	FLEX 6-Position Adjustable Stock – 10.75"-14.25" LOP (Tactical Style)	Adj. Synthetic (Black), Medium Recoil Pad	500/590 FLEX Shotgun (12GA or 20GA), MVP FLEX Rifle, FLEX-22 Rifle
95221	FLEX 4-Position Adjustable Stock/Dual Comb – 12.75"-14.62" LOP (Hunting Style)	Adj. Synthetic (Black), Medium Recoil Pad	500/590 FLEX Shotgun (12GA or 20GA), MVP FLEX Rifle, FLEX-22 Rifle
95222	FLEX 4-Position Adjustable Stock/Dual Comb – 12.75"-14.62" LOP (Hunting Style)	Adj. Synthetic (MO BU Infinity), Medium Recoil Pad	500/590 FLEX Shotgun (12GA or 20GA), MVP FLEX Rifle, FLEX-22 Rifle
95223	FLEX Standard Stock – Compact 12.5" LOP	Synthetic (Black) Medium Recoil Pad	500/590 FLEX Shotgun (12GA or 20GA), MVP FLEX Rifle, FLEX-22 Rifle
95224	FLEX Standard Stock – Full-Length 14.25" LOP	Synthetic (Black) Medium Recoil Pad	500/590 FLEX Shotgun (12GA or 20GA), MVP FLEX Rifle, FLEX-22 Rifle
95226	FLEX Standard Stock – Medium 13.5" LOP	Synthetic (Black) Medium Recoil Pad	500/590 FLEX Shotgun (12GA or 20GA), MVP FLEX Rifle, FLEX-22 Rifle
95227	FLEX Standard Stock – Medium 13.5" LOP	Synthetic (MO Break-Up Infinity) Medium Recoil Pad	500/590 FLEX Shotgun (12GA or 20GA), MVP FLEX Rifle, FLEX-22 Rifle
95228	FLEX Standard Stock – Medium 13.5" LOP	Synthetic (RT Adv. Max-4) Medium Recoil Pad	500/590 FLEX Shotgun (12GA or 20GA), MVP FLEX Rifle, FLEX-22 Rifle

FLEX accessories are only compatible with FLEX system shotguns and MVP FLEX and FLEX-22 rifles. **Standard (Forend):** Non-railed field-style forend. **6-Position:** Tactical-style adjustable stock's length of pull is adjusted through an integrated lever. **4-Position:** Hunting style adjustable stock's length of pull is adjusted through an integrated lever. **Dual Comb:** Interchangeable high and low profile cheek pieces are included. **MO:** Mossy Oak Brand Camo. Mossy Oak, Break-Up and Infinity are registered trademarks of Haas Outdoors, Inc. **RT:** Realtree Brand Camo. Realtree, Advantage, Max-4 and Max-5 are registered trademarks of Spartan RealTree Products, Inc.

FLEX CONVERSION KITS

Available in 12 or 20 Gauge. Three Kit Configurations for converting your Mossberg 500, 590, 590A1, or Maverick 88 shotgun: Conversion Kit for Stocks and Forends (shown), Conversion Kit for Stocks Only, and Conversion Kit for Stocks with FLEX Pistol Grip.



FLEX CONVERSION KIT FEATURES

- Add the flexibility of quick-change components to your existing shotgun
- Switch between hunting and security applications without tools
- Meet the needs of multiple users with a variety of stock, grip, forend, and recoil pad assembly options

FLEX CONVERSION KITS

ITEM #	DESCRIPTION	GAUGE	FOR USE WITH MODELS
FLEX STOCK ADAPTER			
96022	FLEX Stock Adapter Kit	12GA	500, 590, 590A1, 88
96023	FLEX Stock Adapter Kit	20GA	500, 505, 88
FLEX STOCK & FOREARM ADAPTER			
96024	FLEX Stock & Forearm Adapter Kit	12GA	500, 590, 590A1, 88
96025	FLEX Stock & Forearm Adapter Kit	20GA	500, 505, 88
FLEX STOCK ADAPTER W/PISTOL GRIP			
96026	FLEX Stock Adapter Kit with Pistol Grip	12GA	500, 590, 590A1, 88
96027	FLEX Stock Adapter Kit with Pistol Grip	20GA	500, 505, 88

CONVERT YOUR EXISTING MOSSBERG OR MAVERICK SHOTGUN INTO A FLEX SHOTGUN WITH FLEX CONVERSION KITS



TO ORDER FLEX CONVERSION KITS AND ACCESSORIES: GO TO MOSSBERG.COM

PISTOL ACCESSORIES

Magazines, Holsters & Pouches

MC2sc®, MC2c® & MC1sc® MAGAZINES, HOLSTERS & POUCHES

ITEM #	DESCRIPTION/FEATURES	CALIBER	MATERIAL (COLOR)	FITS/FOR MODELS
PISTOL MAGAZINES				
95422	MC2sc 14-Round Extended Magazine, Double Stack	9mm	Steel	MC2sc
95423	MC2sc 11-Round Flush-Fit Magazine, Double Stack	9mm	Steel	MC2sc
95424	MC2sc 10-Round Flush-Fit Magazine, Double Stack	9mm	Steel	MC2sc
95425	MC2sc 10-Round Extended Magazine, Double Stack	9mm	Steel	MC2sc
95427	MC2c 16-Round Flush-Fit Magazine, Double Stack	9mm	Steel	MC2c
95426	MC2c 14-Round Flush-Fit Magazine, Double Stack	9mm	Steel	MC2c
95421	MC2c 10-Round Flush-Fit Magazine, Double Stack	9mm	Steel	MC2c
95416	MC1sc 7-Round Extended Magazine	9mm	Polymer (Clear Count™)	MC1sc
95415	MC1sc 6-Round Flush-Fit Magazine	9mm	Polymer (Clear Count™)	MC1sc

HOLSTERS & POUCHES

95405	MC2sc Holster - IWB/OWB (RH/LH) - DeSantis® Pegasus Slim-Tuk®	Kydex (Black, Logo)	MC2sc
105459	MC2c Holster - IWB/OWB (RH/LH) - DeSantis® Pegasus Slim-Tuk®	Kydex (Black, Logo)	MC2c
105460	MC2 Mag Pouch - OWB (RH/LH) - DeSantis® Pegasus Quantico™	Kydex (Black)	MC2sc, MC2c

IWB: Inside Waistband. **OWB:** Outside Waistband. **RH/LH:** Holster can be configured for right- or left-handed use. **DeSantis®:** DeSantis Gunhide brand holsters and pouches. DeSantis®, Slim-Tuk® and Quantico™ are trademarks of DeSantis Holster and Leather Goods.



MC2sc 14-Round
Extended
(Double Stack)
#95422



MC2sc 11-Round
Flush-Fit
(Double Stack)
#95423



MC2sc 10-Round
Flush-Fit
(Double Stack)
#95424



MC2c 16-Round
Extended
(Double Stack)
#95427



MC2c 14-Round
Flush-Fit
(Double Stack)
#95426



MC2c 10-Round
Flush-Fit
(Double Stack)
#95421



MC1sc 7-Round
Extended
(Single Stack)
#95416



MC1sc 6-Round
Flush-Fit
(Single Stack)
#95415



MC2sc Slim-Tuk®
Holster - IWB/OWB - RH/LH
#95405



MC2c Slim-Tuk®
Holster - IWB/OWB - RH/LH
#105459



MC2 Mag Pouch
OWB - RH/LH
#105460



SEE CURRENT SELECTIONS AND ORDER PISTOL ACCESSORIES AT MOSSBERG.COM

Shoot Safe. Be Safe.

Safety. It's not just about protecting your home and family. It's about making sure you always handle your firearm safely and responsibly, practice safe firearm storage and transport, and be a positive role model for the shooting sports community. The pursuit of safety is why we're proud to be one of the first manufacturers to ship a free gun lock with every gun. So shoot safe, be safe — and always follow these safe firearms handling rules as set by the Sporting Arms and Ammunition Manufacturers' Institute.

- 1 Always keep the muzzle pointed in a safe direction.
- 2 Firearms should be unloaded when not in use.
- 3 Don't rely on your gun's "safety."
- 4 Be sure of your target and what is beyond it.
- 5 Use correct ammunition.
- 6 If your gun fails to fire when the trigger is pulled,
HANDLE WITH CARE!
- 7 Always wear eye and ear protection when shooting.
- 8 Be sure the barrel is clear of obstructions
before shooting.
- 9 Don't alter or modify your gun, and have guns
serviced regularly.
- 10 Learn the mechanical and handling characteristics
of your firearm before using it.



Courtesy of Sporting Arms and Ammunition Manufacturers' Institute





MOSSBERG®

O.F. MOSSBERG & SONS, INC.

7 Grasso Avenue, P.O. Box 497

North Haven, CT 06473-3237

HQ: 203-230-5300

Service: 800-363-3555

MOSSBERG.COM



SAFETY AND SAFE FIREARMS HANDLING IS EVERYONE'S RESPONSIBILITY

© 2024 O.F. Mossberg & Sons, Inc. All rights reserved. Printed in the USA.